

C.S. # 1264

Hardcopy 12-5 #23

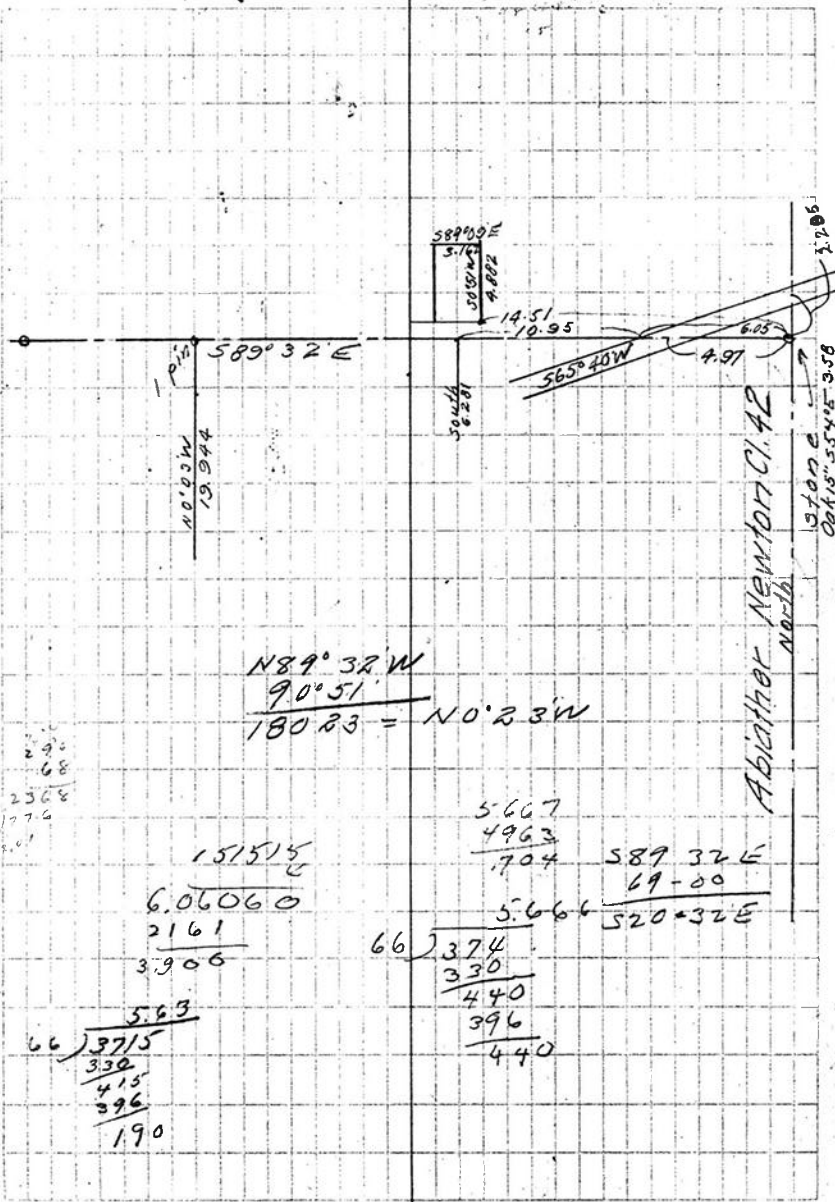
also see notes in file

F. B. 61-3

Began at a stone, the N.E. corner of Abiather Newton Cl. 42

5.000	5.000	Nest
5.000	5.000	N89°32'W
5.000 <sup>+55'</sup>	4.977	
1.630 <sup>+13'</sup>	1.606	16.683
4" pipe		
2.956 <sup>+64'</sup>	2.936	
3.437	3.437	
2" pipe		
2.161	2.161	
3.900	3.900	
4" pipe		
5.000 <sup>+7'</sup>	4.963	int ang. 90°51'
1.670 <sup>+5'</sup>	.667	N0°23'W
4" pipe		
5.000	5.000	90°51' def. ang.
3.347	3.347	
2.054 <sup>-10'</sup>	2.023	589°32'E
4" pipe		
5.00	4.963	69°0'R
1.085	1.085	1.20 N.E. Co. Rep.
4	4	380°32'E
		69°L to cor.

Set on pt. 77 on line S.E. from N.E. Co.



4.000<sup>-80</sup>  
1.000  
.725

3.961  
1.000  
725

105°30' L. Franklin SE or SEW

N53°58'E

of Natural water CrsSE.

5.000

1.37

N53°58'E

75°50'R Natural W. Crs

1.12

S50°12'E

60°56'W

N70°E N68°52'E

2.61

USE to & Crs - 325 + 00 E

7.06

19'0" L

fence

S20°32'E  
105 30

126 02

180 00

N53°58'E

75 50

129 48

60 56

N68°52'E

19

N49°52'E

180 00

129 48

S50°12'E

C.S. ~~67~~  
1264

T. 12 S. R. 5 W. W. M.

Surveyed for Corvallis City Water Works

March 25, 1931 by Walter M. Larsen

Scale: - 1 in = 3 chains

Dep. C. S.

