

C.S. # 1318

Original Town of Marysville

Block 10

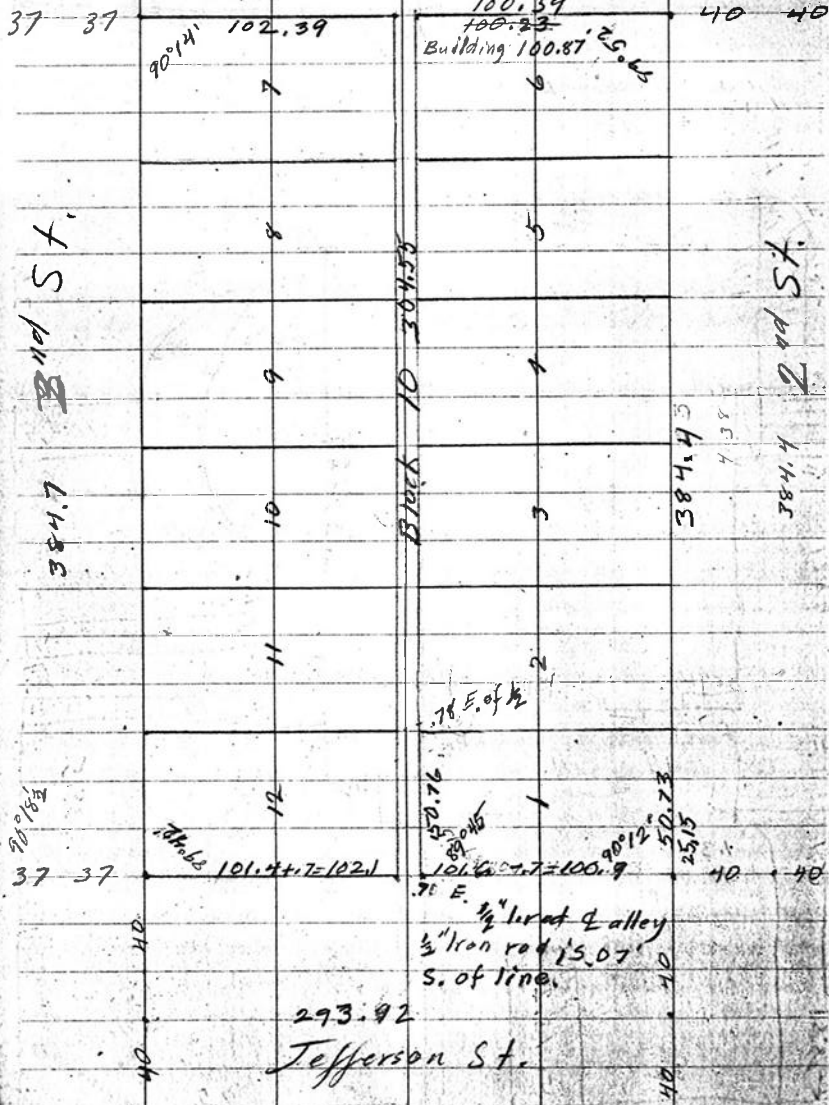
F.B. 85-19

19

Original Town

1918

293.16 Madison St



20

For Montgomery & Ward 100.73
100.23
.50

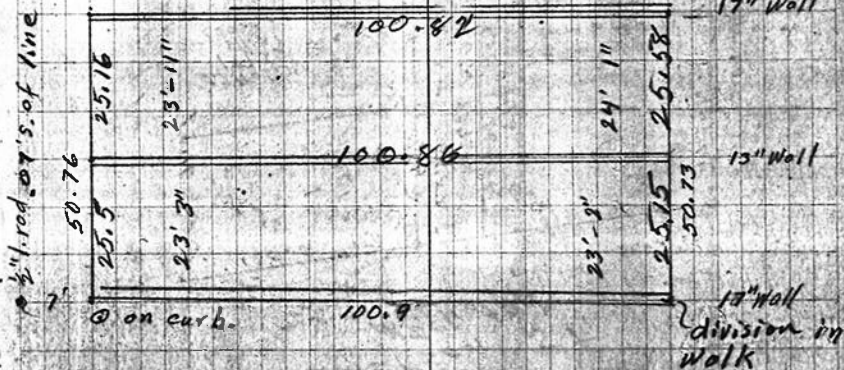
304.5
6 304.4
50.733
25.365

384.4

6 304.54
50.757

90° 18' 2
90° 07' 2
2 150° 29
90° 14'

256.93
37.00
293.93
77.00
2 216.93
108.465
108.465
100.75



19

Original Town

1918

293.16 Madison St

37 37

90°14' 102.39

100.39
~~100.23~~
Building 100.87 E.G.L.S

40 40

Mad St.

384.7

9

Block 10 304.53

1

384.43

7.38

2nd St.

384.4

10

78 E. of 1/2

50.76

38.016

90°12' 50.23

25.15

37 37

78.62 101.4 + 7 = 102.1

101.62 + 7 = 100.9

40 40

78 E.
1/2" line at 2 alley
3/4" iron rod 15.07'
S. of line.

293.92

Jefferson St.

For Montgomery & Ward 100.73
100.23
.50

70 45 5
6 | 304.4
50.733
25.365

384.4

6 | 304.54
50.757

90°18 1/2
90 09 E
2 | 150°29
90°14'

256.93
37.00
293.93
77.00
2 | 216.93
108.465
7
108.465
.21
100.75

3/4" iron rod 20' S. of line



17" Wall

15" Wall

13" Wall
division in
walk