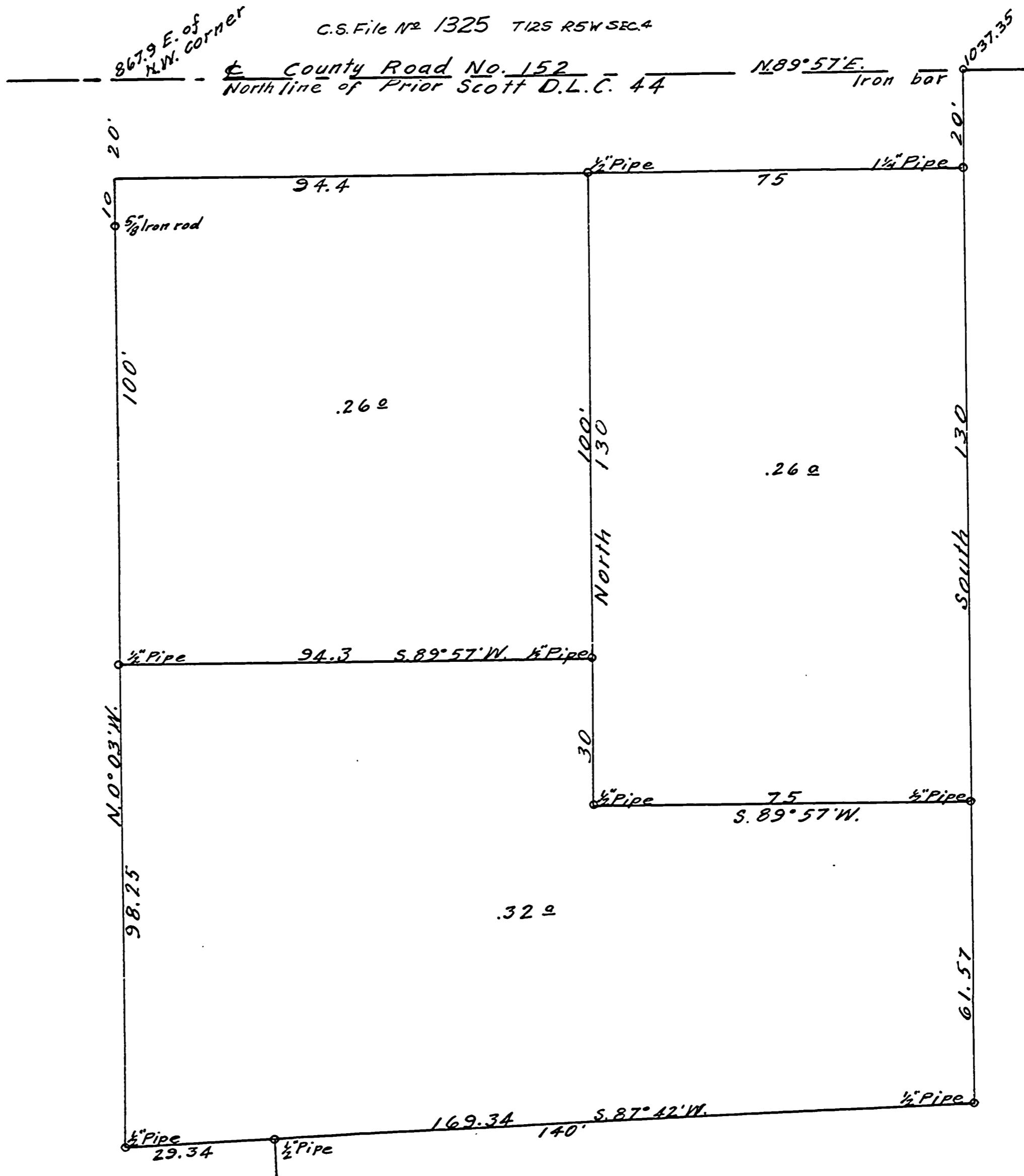


1325

CREST OF SUNSET HILL

SCALE 1"=20'

C.S. File No 1325 T12S R5W SEC. 4



C.S. File No 1325

25

12-5
Book 61

Book 61
12-5

33

1325

34

C.S. 61
 Prior South Cl. 44 12-5
 Beg. at a 3/4" pipe N. of Hwy. at line bot.
 Gibson + Lund B.S. N. 0° 06' W.
 Thence N. 84° 30' W. to S.W. cor. of Matt Coleman's
 Thence North

+ 3° 18' 186.65 = 186.24
 115.23
 301.57

N. 89° 57' E. + 234' 300.97 = 300.67

From Coleman's S.W. cor.

S. 88° 51' E. - 235' 195.62 = 195.12
 1/4" pipe
 S. 78° 17' E. 26.75

5.68° E. 2nd line

S. 61° 09' to 1/4" line S. 59° 40' E.

1/2" pipe

S. 44° 38' E.

1 3/4" pipe

N. 66° 29' E.

3/4" pipe

82.01
 582.012 E.
 51.23

24.77

36.8

730.9
 306.45
 1037.35 E. of NW.
 Cl. 44.

N. 84° 30' W.

31
 55
 86.97

103.7
 S. 77° 04' W.
 1 1/4" pipe

Clerk M. Wickelma's