

C.S. # 1355

Hardcopy 11-5 # 10

also see notes in file

F. B. 53-21

County Survey #290
James L. Mulkey, Sr. Cl. 63
T. 11 S. R. 5 W.

Beg. at 3/4" Pipe
S.W. cor. of Cl. 63.
Anchor rod S. 29° 54' E. 22.93

" " N. 22° 10' W. 28.3 coil P
S. end of ϕ of culv. 21.6 9'S. ϕ . of Grant St.
1 N. 0° 14' W. 330'

3/4" pipe
2 165
3/4" Pipe
at - 60

at
3 165
3/4" pipe

lined to stone, struck E. edge

From A 2
S. 89° 04' E. To pipe 20.00 cts.

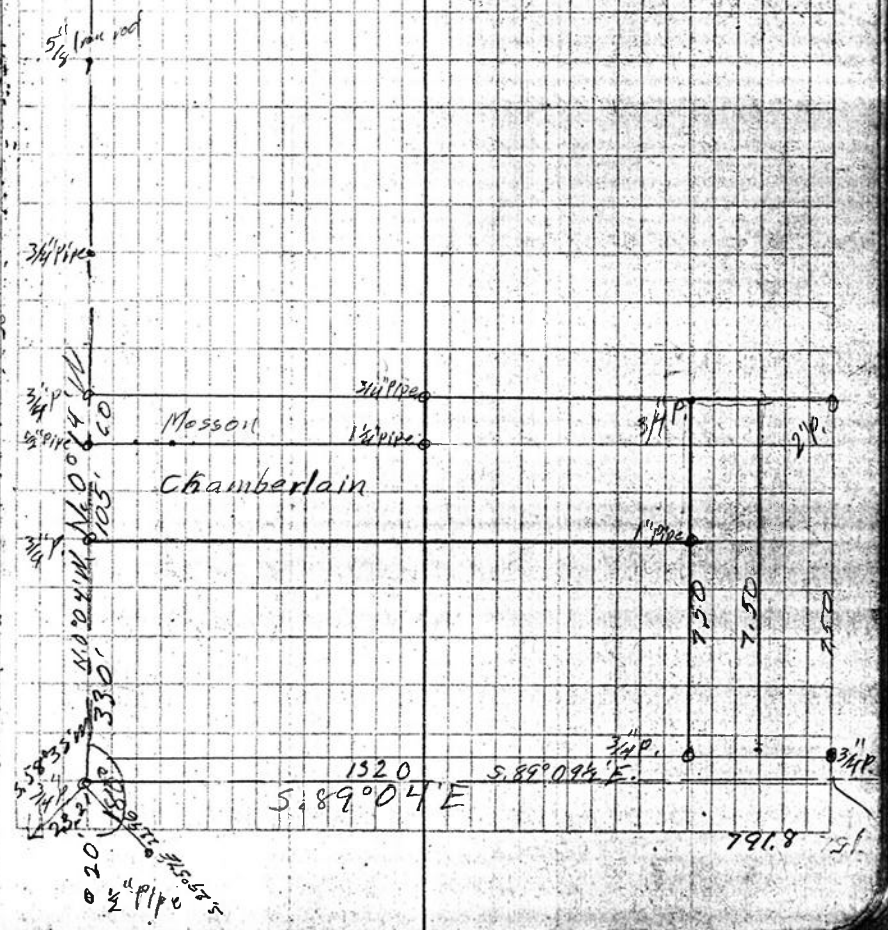
From S.W. of Cl. 63 S. 89° 04' E 8.000

" -1° 14' 8.000
4.00 B

Set 3/4" x 60' pipe N. 0° 14' W. 303
" 1" x 25" " N. 0° 14' E 5000

For E. G. Mason Nov. 16, 1937
W. J. Chamberlain

$1843.05 \frac{.00149 = 5'}{2.75}$



County Survey #290
James L. Mulkey Sr. Cl. 63
T. 11 S. R. 5 W.

Begin at 3/4" Pipe

S.W. cor. of Cl. 63.

Anchor rod S. 29° 54' E, 22.93

" " N. 22° 10' W. 28.3 coil 9

S. end of Φ of culv. 21.6 9'S. Φ . of Grant St.

1 N. 0° 14' W. 330'

3/4" pipe

2 165

3/4" Pipe

at - 60

3 165

3/4" pipe

lined to stone, struck E. edge

From A 2

S. 89° 04' E. to pipe 20.00 obs.

From S.W. of Cl. 63 S. 89° 04' E 8.000

-1° 14' 8.000

4.00 B

Set 3/4" x 60' pipe N. 0° 14' W. 303
" 1" x 25" " N. 0° 14' E 5.000

For E. G. Mason Nov. 16, 1937
W. J. Chamberlain

$$1843.05 \cdot \frac{0.0149}{2.75} = 5'$$

