

C.S. # 1361

Jobs Addition

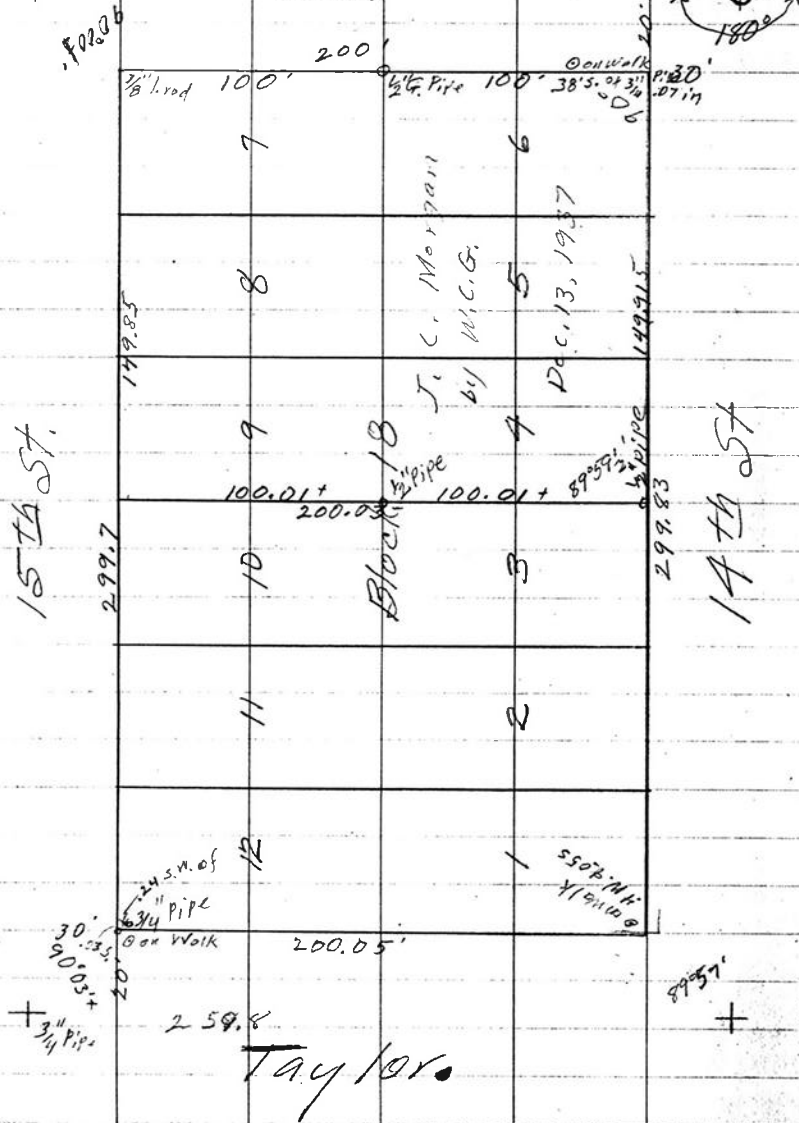
F.B. 85-41

41

1361

+ 1" Pipe
142.06

Fillmore St.
266.06'



Dec. 13, 1937
For J.C. Morgan

18

1" PIPE
at 13 St.

42

90°
90°00'
70°03'
89°57'
36°00'

41

1361

+ 1" Pipe
102.06

Fillmore St.
266.06'

15th St.

299.7

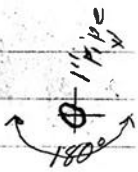
149.85

3/8" Lead 100'

200'

1/4" Pipe 100'

on walk 38'5" of 3" pipe 27 1/2"



7

8

9

10

11

12

J. C. Morgan
by M.C.G.

Dec. 13, 1937

Block 18

100.01 +
200.03

4

3

2

1

14th St

299.83

1/4" pipe 89'57"

299.96

+ 3/4" Pipe
30' 53" of
90' 03" of
20'

259.8

Taylor

89'57"

Dec. 13, 1937
For J.C. Morgan

18

1" pipe
at 13 St.

42

90°
90°00'
90°03'
89°57'
36°00'