

C.S. # 1369

Hardcopy City Plat #28

also see notes in file

F. B. 85-49



County Survey 71 Rice Tracts

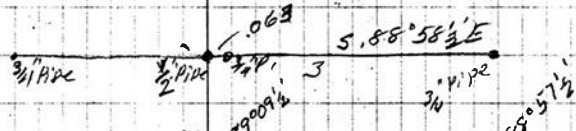
1369

.455
 16.617
 17.072
 3.820
 20.892
 2.796
 23.688

3.82
 2796

Mrs. Anna Shedd
 March 1938
 2718

20.875
 2.734
 23.609



712.57
 10.796
 5.398

3.909
 258.0
 5.86° 44' W.

16 AC
 86° 45'

10.203
 5.00 E
 673.7

3/4 AC 3.948
 260.56
 2 1/2 AC

5.106
 2.42
 2.686

7.998
 3.230
 10.228

County Survey 71 Rice Tracts

1369

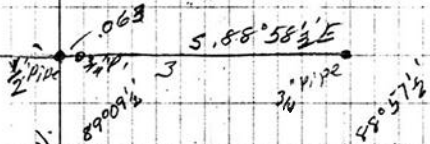
.455
 16.617
 17.072
 3.820
 20.892
 2.796
 23.688

3.82
 2796

Mrs. Anna Shedd
 March 1938
 2718

20.875
 2.734
 23.609

3/4" RICE



712.57

10.796

5.398

3.909
 258.0
 5.86° 44' W.

14.7

10.203

6.73.9

5.00° E

3/4" RICE

3.948
 260.56

3/4" RICE

5.106
 2.112
 2.886

7.992
 3.220
 10.212