

C.S. # 1384

Hardcopy 12-6 # 27

also see notes in file

F. B. 85-57

Continued from Page 9

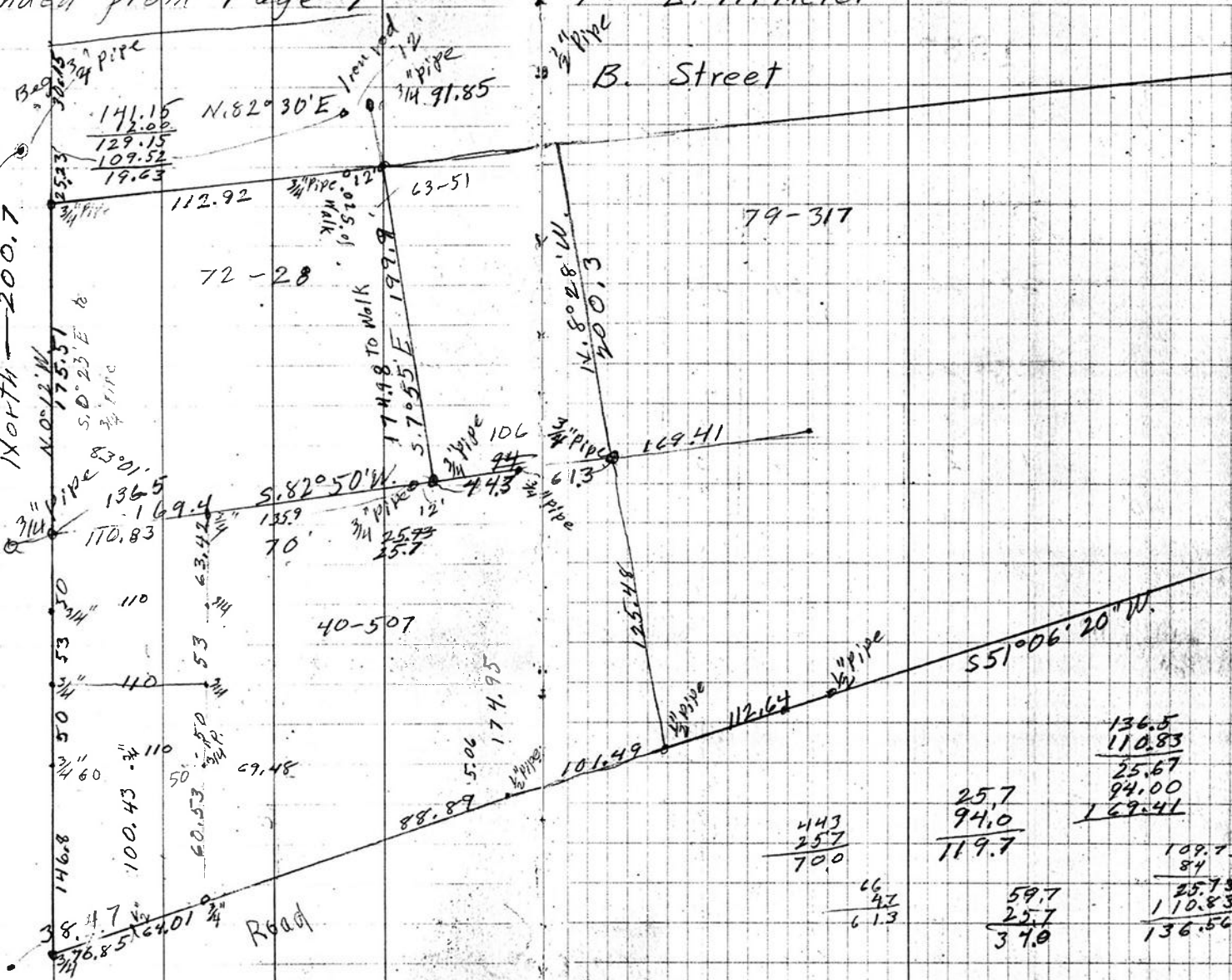
82° 30'
8 25'
90° 58'

25.21 30.25

1384

13.80 to E.B. ST.
Front S.E. of Johnson Ct.

North - 200.7



For E. H. Meier

B. Street

Road

141.15
129.15
109.52
19.63

136.5
169.4
170.83

146.8
100.43
60.53

112.92
72-28
63-51

40-507

88.89
5.06
174.95

174.98 TO Walk
5.7055 E
199.9

14.8028 W
200.13

125.48

101.49

112.64

169.41

61.3

551° 06' 20" W.

443
257
70.0

66
42
6.13

25.7
94.0
119.7

59.7
25.7
34.0

136.5
110.83
25.67
94.00
169.41

109.73
84
25.73
110.83
136.56

Continued from Page 9

82° 30'
8 25'
90° 58'

For E. H. Meier

B. Street

25.21 30.25

1384

13.80 to E. St.

North - 200.7

From S.E. of Johnson C.I.

