

C.S. 1431

SEE NOTES IN FILE

FIELD BOOK 68, PAGE 13

C.S. #185 in Philomath

Lots 49 & 50, Block 10

Beg. at 3/4" Pipe cen. A. & N. Sts.

E.S. 3/4" Pipe cen. B. & North Sts.

L.L. to cen. A. & College Sts. L. 89° 07'

S 89° 07' N.

$$-1^{\circ} 20' \quad 281.15 = \begin{array}{r} 281.07 \\ - .28 \\ \hline \text{for} \end{array}$$

S. line of Street

Back to Cen. A & N. Sts.

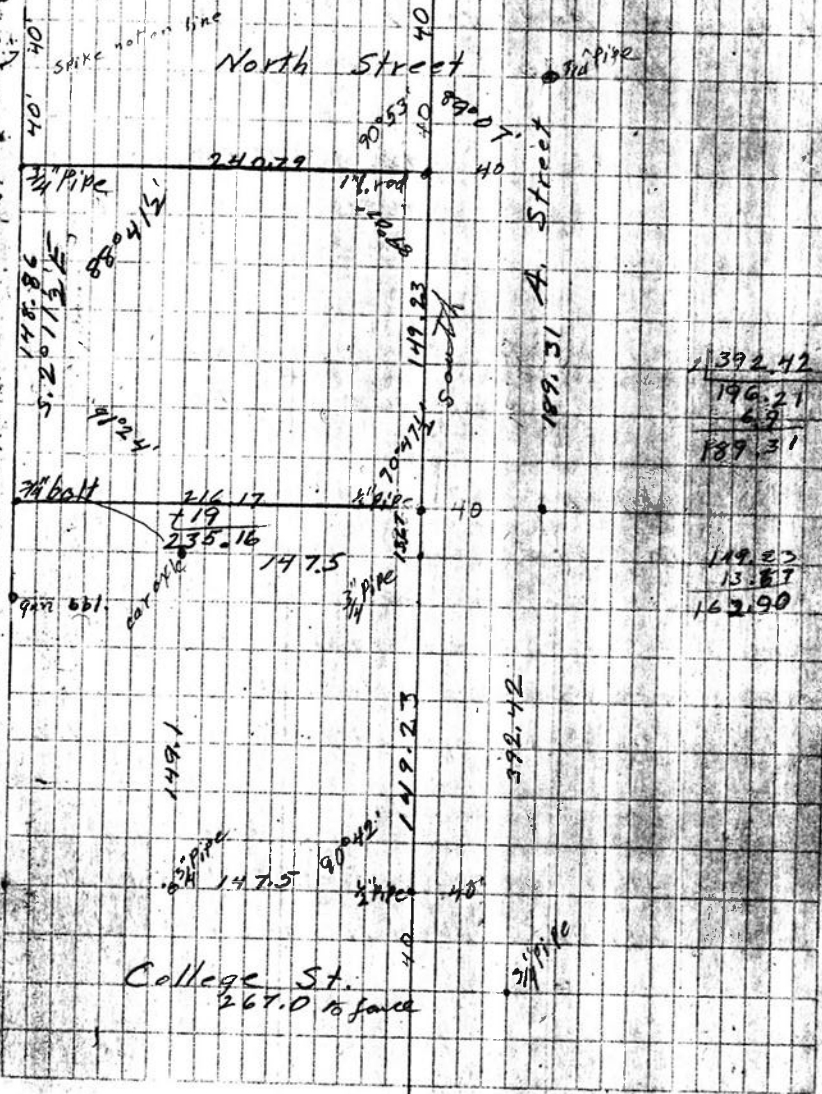
South

$$-1^{\circ} 42' \quad 392.55 = \begin{array}{r} 392.42 \\ - .13 \\ \hline \text{to } 3/4 \text{ pipe} \end{array}$$

For Mrs. Laura Gorman

May 10, 1939.

E. Henderson
Ralph McDonald

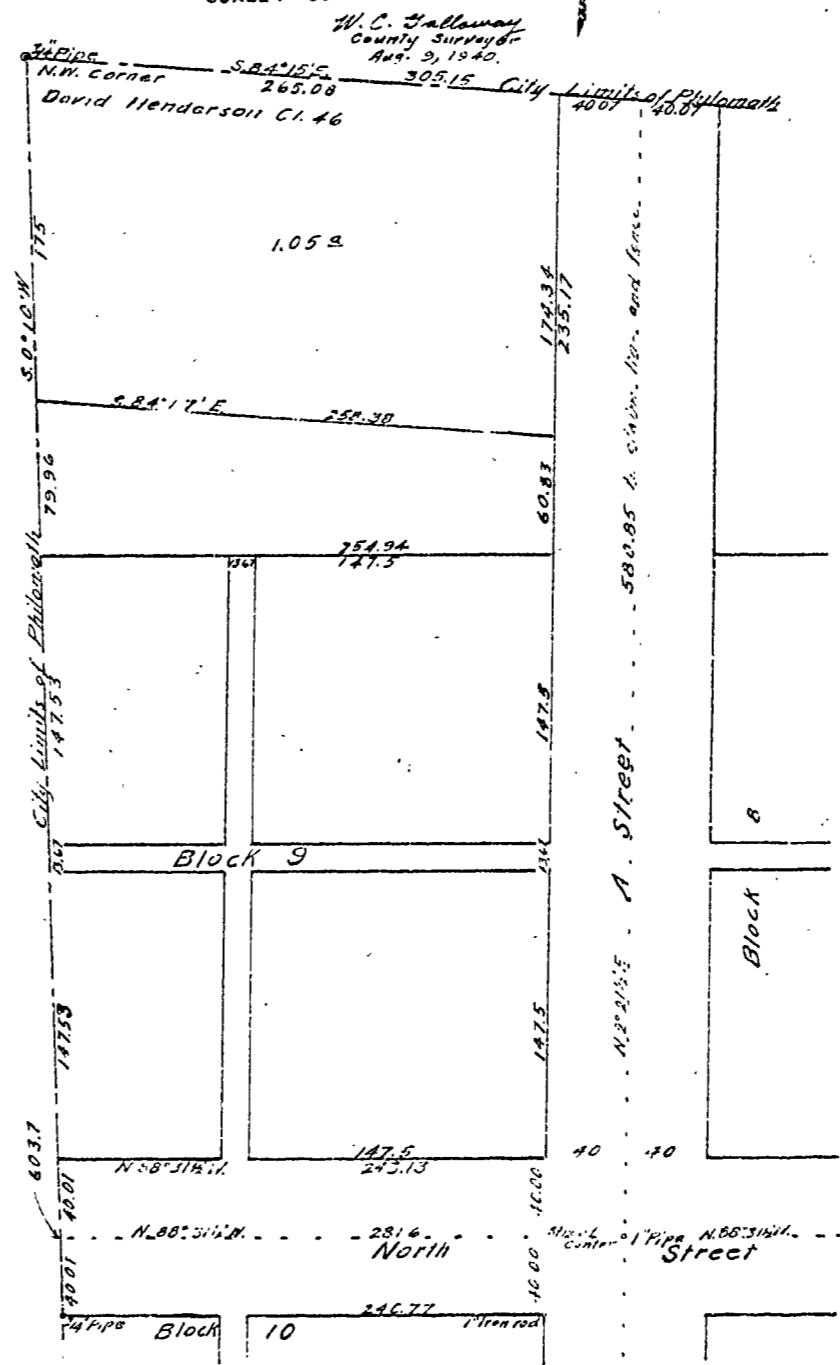


392.42
196.21
6.9
189.31
149.82
13.87
163.90

1431-A

1431-A

C.S. 1431-A
SEE ALSO 1421
COUNTY SURVEY NO. 185
N. W. CORNER
OF
PHILOMATH
SEC. 13 T. 12 S. R. 6 W. W. M.
SCALE 1"=50'



C.S. File # 1431-A