

1448

DRAWING NUMBER

PLAN HOLD CORPORATION - IRVINE, CALIFORNIA
REGISTERED PROFESSIONAL
PLANNING ENGINEER
EXPIRES DATE OF FEBRUARY 28, 1962

1448

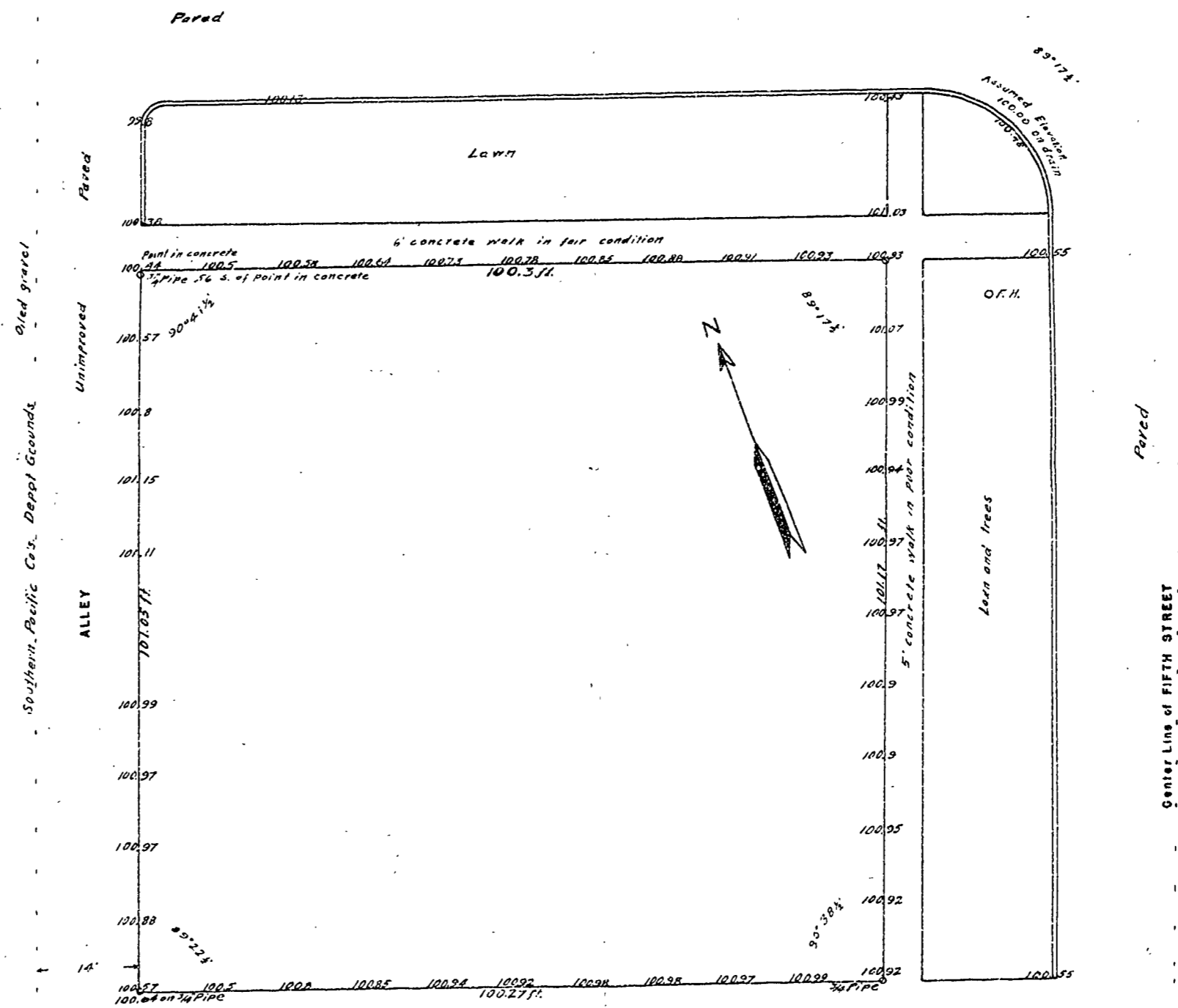
DRAWING NUMBER

PLAN HOLD CORPORATION - IRVINE, CALIFORNIA
REGISTERED PROFESSIONAL
PLANNING ENGINEER
EXPIRES DATE OF FEBRUARY 28, 1962

LOTS 5 & 6 BLOCK 8 COUNTY ADDITION TO CORVALLIS

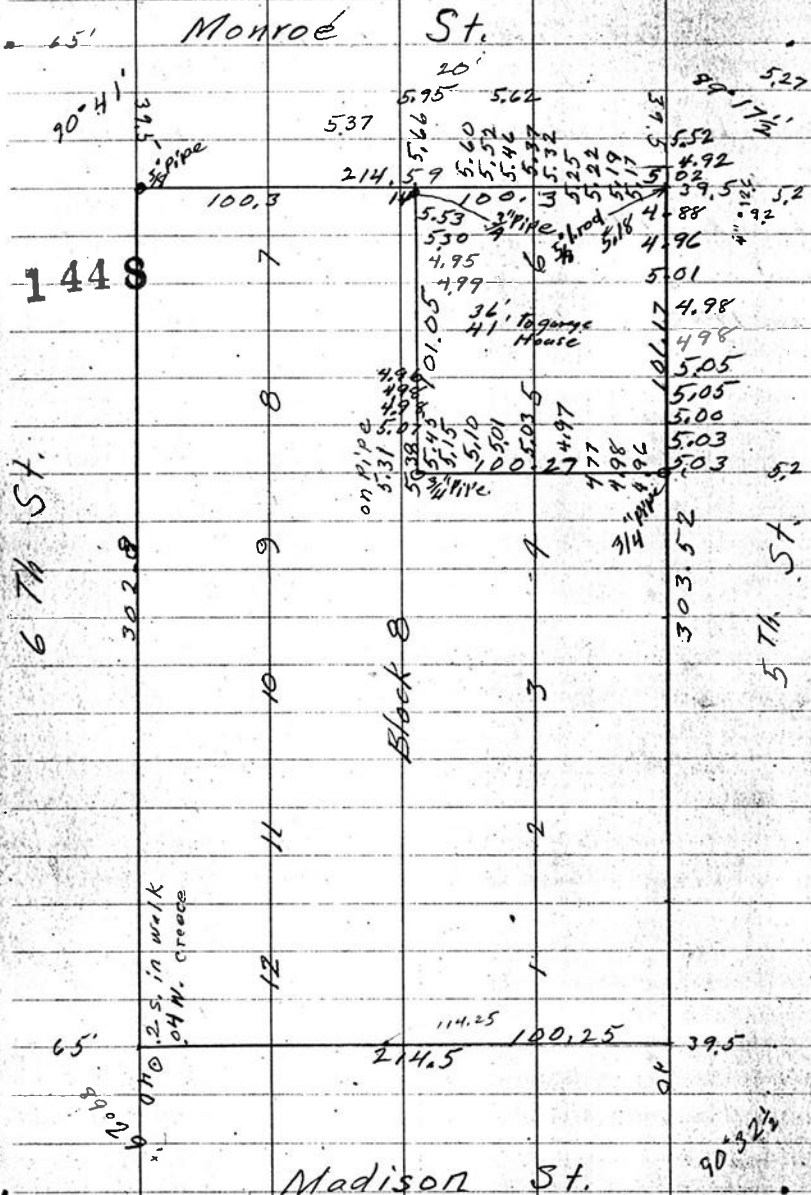
SCALE 1" = 10'

Center Line of MONROE STREET



87

County Add.



Oct. 2, 1939. General Petroleum Corp. 88
of Calif. Oct. 1939.

303.50	300.00	302.8	90° 32 1/2'
609.03	297.46	303.52	89° 17 1/2'
	253.20	2160.32	90° 41'
		1303.16	89° 29'
			36° 00'

Sta.	B.S.	H.I.	F.S.	Elev.	Notes
	5.95			106.00	N.W. cor. drain
		105.95			
	6.10			100.00	" " "
		106.10			
	5.75				9.1 Feet H.