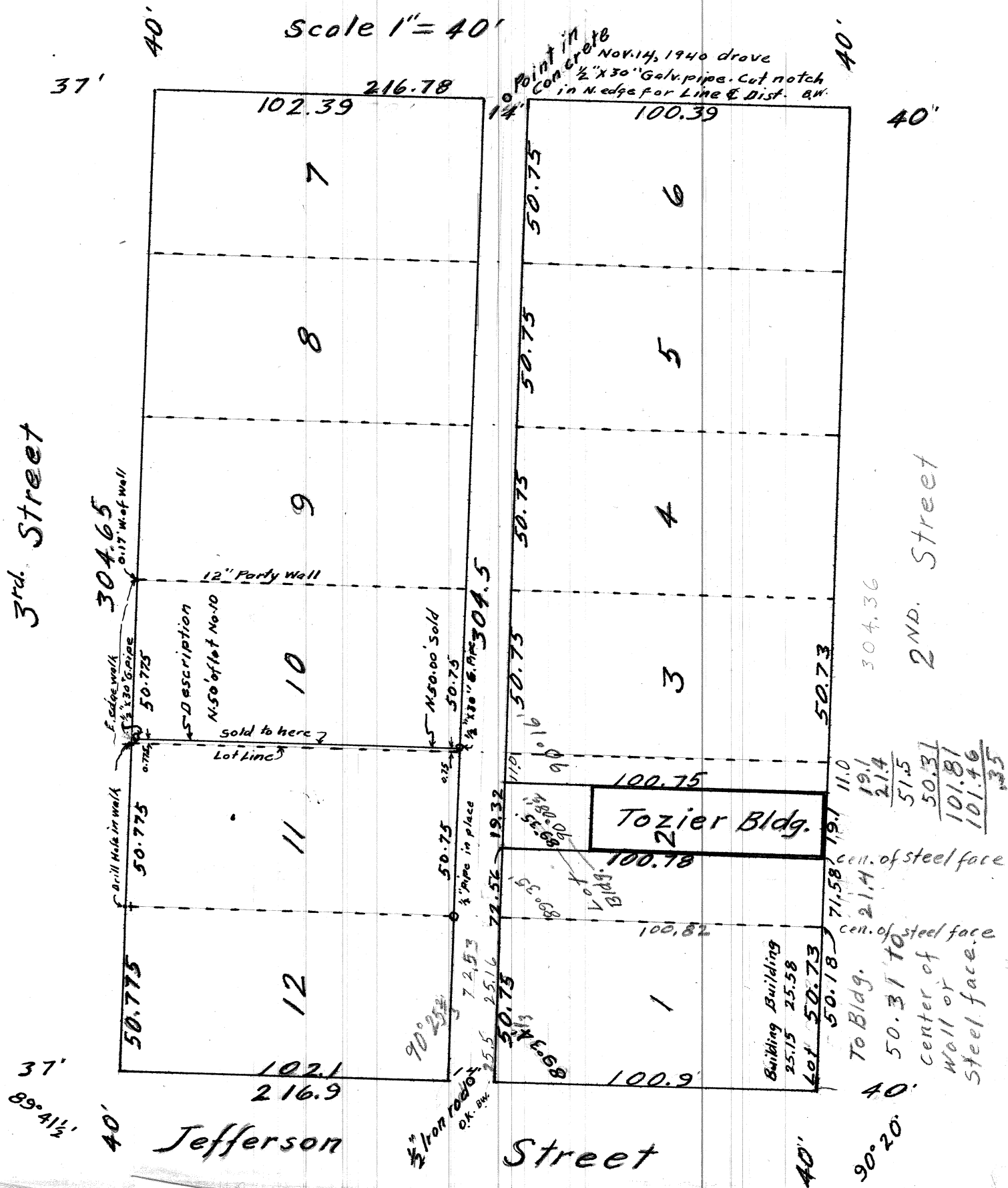


CS 1499 SEE ALSO 1499A, 1499B

# Block 10 of Original Town Corvallis, Oregon

Scale 1" = 40'



3rd Street

37'  
89° 41 1/2'

304.65  
E. edge walk  
1/2" x 30" Galv. pipe  
0.17' W. of wall

40'

40'

12" Party Wall

N.S.D. description  
N. 50' offset No. 10

Sold to here  
Lot line

90° 25'  
1/2" Iron rod  
O.K. B.M.

Point in  
concrete  
Nov. 14, 1940 drove  
1/2" x 30" Galv. pipe. Cut notch  
in N. edge for Line & Dist. an.

Tozier Bldg.

Building Building  
25.15 25.58  
Lot 50.73

11.0  
19.1  
2.14  
51.5  
50.31  
101.81  
101.46  
135

cent. of steel face  
To Bldg.  
50.31 TO  
center of  
Wall or  
Steel face.

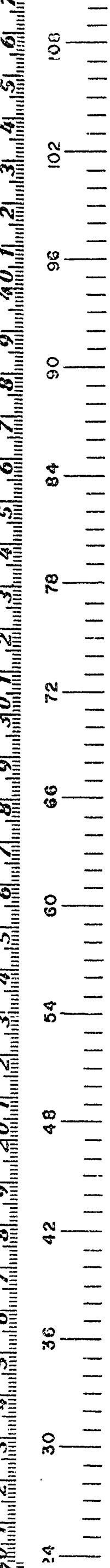
304.36

2nd Street

Jefferson Street

40'

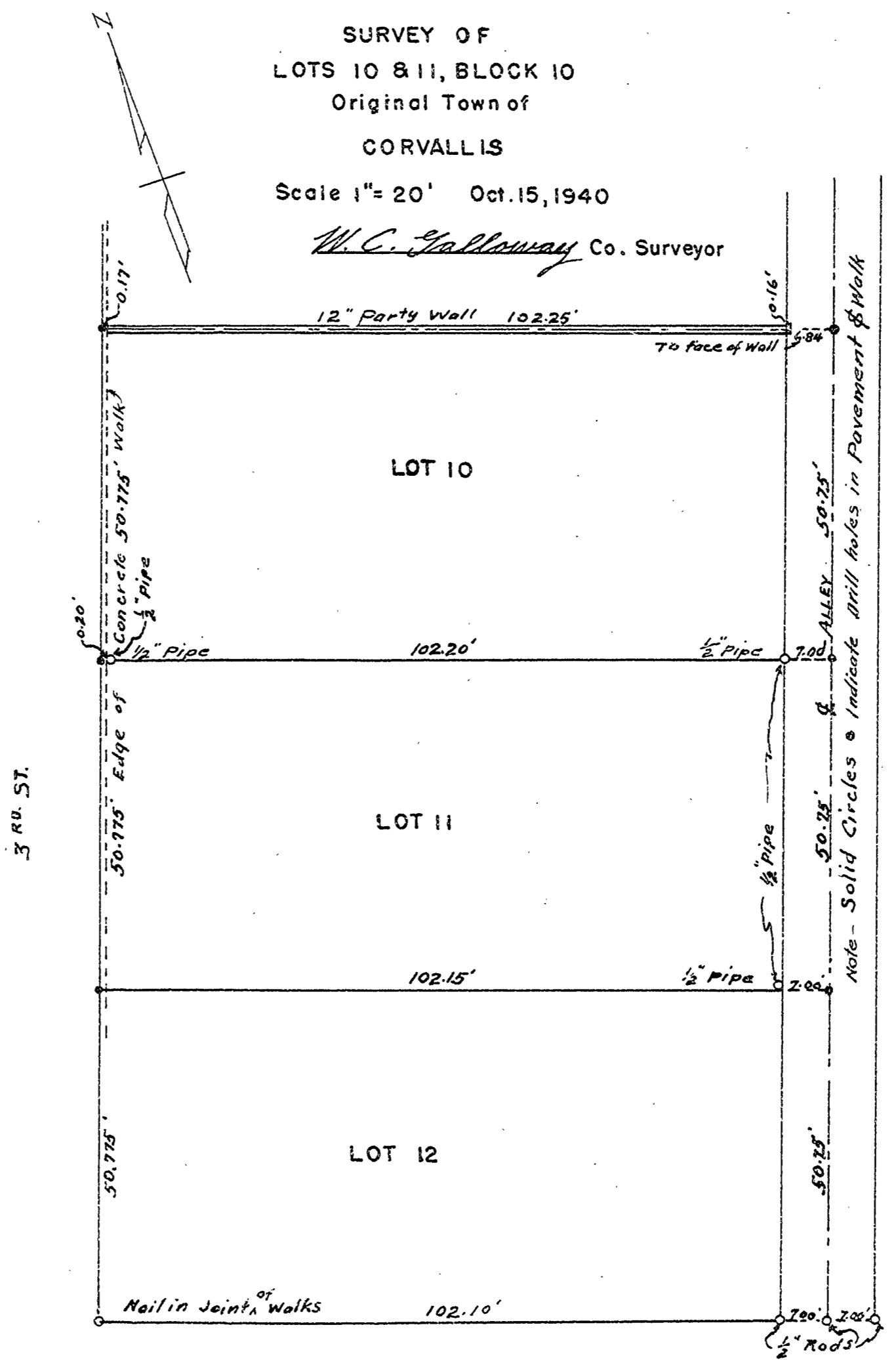
90° 20'



1499A

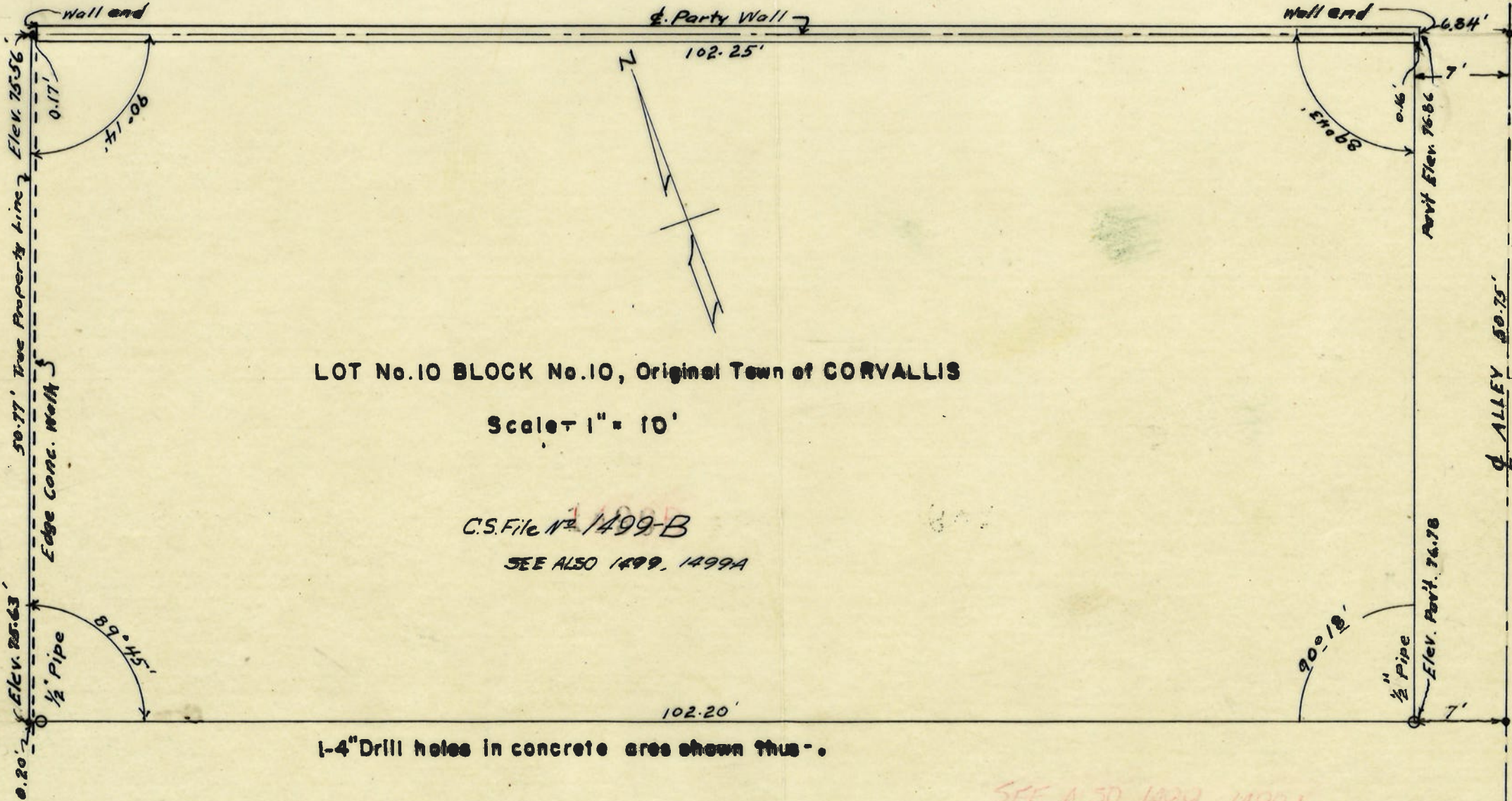
SURVEY OF  
LOTS 10 & 11, BLOCK 10  
Original Town of  
CORVALLIS  
Scale 1" = 20' Oct. 15, 1940

*W. C. Galloway* Co. Surveyor





3rd. 51.



LOT No. 10 BLOCK No. 10, Original Town of CORVALLIS

Scale 1" = 10'

C.S. File No. 1499-B

SEE ALSO 1499, 1499A

1-4" Drill holes in concrete are shown thus -.

SEE ALSO 1499, 1499A

C.S. File No. 1499-B



Book 85

DEITZGEN  
4 1/2

---

ENGINEERS  
FIELD BOOK  
No. 404F

---



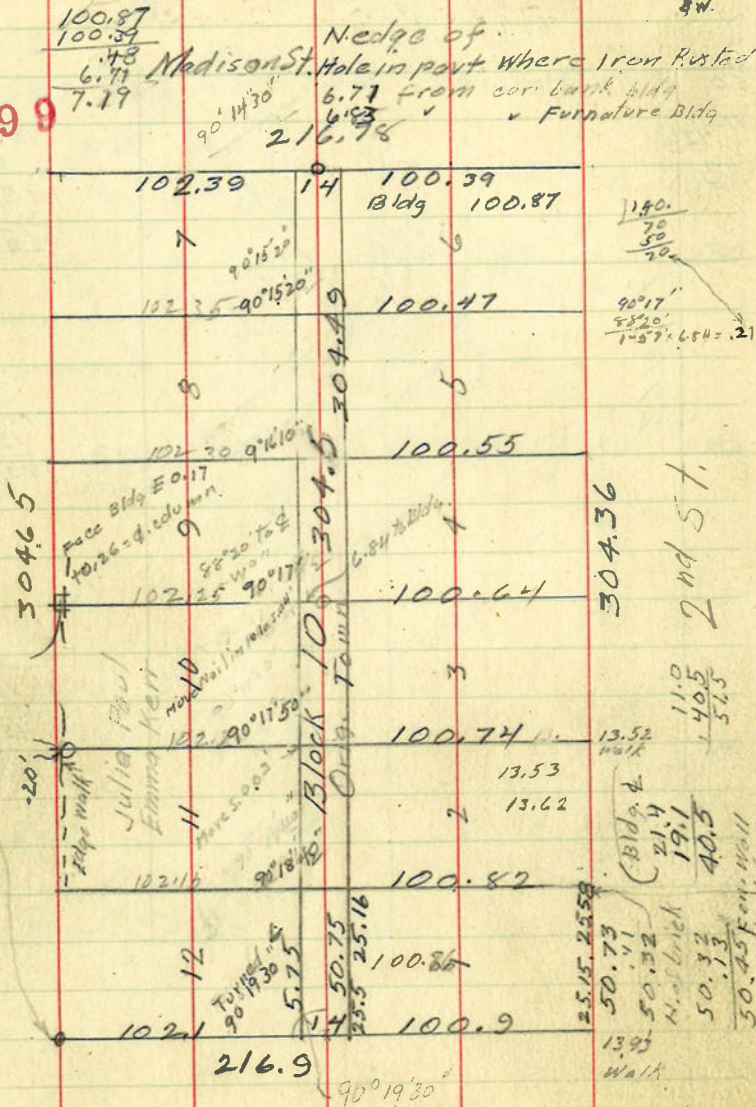
Set 1/2" x 30" G Pipe 11-14-40  
Notch in N. edge is True Point  
SW.

1499

Nedge of  
Hole in part where Iron Picked  
6.77 from cor. bank bldg  
6.83 Furniture Bldg  
216.78

Third St.

Nail in intersection of walk



Jefferson St.

For O.A. Tozier Building

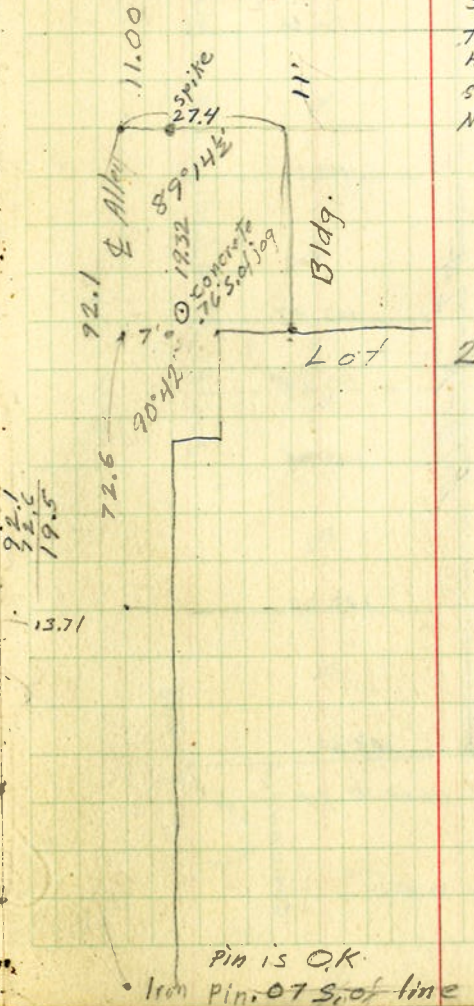
Oct. 15, 1940.

out

304.65  
304.36  
2609.01  
6304.505  
50.75

6304.65  
50.775  
101.550  
182.525  
253.100  
253.875  
304.650

50.75 Blueprint to  
Woodcock-McKenzie  
Realty Co.  
75.50 Corb L Penny Store  
4.75 Elev  
HI. 5028 Elev  
NW - 4.72 75.56  
S.W. 4.65 75.63  
TP - 4.62 75.67  
HI + 6.23 81.86  
S.E. - 5.08 76.78  
N.E. - 5.00 76.86.



Pin is OK

Iron Pin .075 of line