

C.S. # 1506

Hardcopy 12-5 # 17

also see notes in file

F. B. 63-111

12-5

Book 63.

FIELD BOOK

361A

1506

County Survey #61
T12-5 Prier, Scott C. 44

Beginning @ in & Car road

S.W. corner of Esther Boll's land
(John Hayes place) S. 72° 22' W. 1196 = 114 W.

Set 2 1/2" pipe offset N. 114

477 S. of 1 1/2" pipe

N. 0° 22' E
correction 2' W.
(North 24.892)

-2° 23' 5.300

8.000

+1° 25' 8.397

3.151

0° 7.087

and E. 101

.092
.087
.005

-1° 10' 8.177

offset
2.853 W.

4 L. 43° 47 1/2'

To 1" pipe, H.H. Gibson's S.E. corner

Back to Δ 3

12.000

S 89° 57' W.
correction N. 1'

(S 89° 58' W. 23.214)

7.861

N. 10.903

10,995

± 1/8
and N. 0.93

6

Dec. 31, 1940
For Esther Ball

Set 1 1/2" pipe
N. 105
3.217

3/4" pipe S. 89° 58' W.
23.257

offset

.114 W.
.039 W.
.153 W.

24.893 N. 0° 22' E

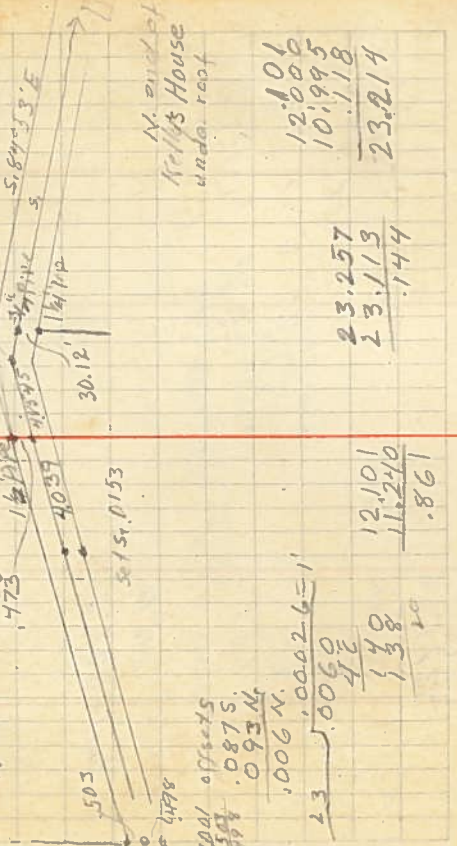
24.897
24.801
+ 1.090
24.805
+ .087
24.892

11.151
11.061
.090
.092
N

25.000
2.853

22.147
21.992
+ .153

We made it
773
4039
S. 15.0153



473
463
1009

N. 211.011
Kelley's House
under roof

101
12.000
10.995
1.118
23.214

23.257
23.113
.144

12.101
11.240
.861

5.0062
42
138
10

104 offset .0875
504 offset .093 W.
1006 N. 1.0002-6=1

23

From Δ G. L. R. $4^{\circ}58'$ offset
 To $\frac{1}{2}$ " pipe, Correll's S.E. corner
 At N. $0^{\circ}10'$ W. We line E. 0.099 from pipe
 At N. $0^{\circ}10'$ W. We line E. 0.096 from iron
 S. $0^{\circ}10'$ E
 Correction W. 6 3/4'
 (S. $0^{\circ}03 \frac{1}{2}'$ E.)
 7 \angle L. $1^{\circ}28'$ offset
 8 \angle R. $32^{\circ}01 \frac{1}{2}'$ 1.90 E.
 From SW. cor. offset
 To a $\frac{1}{2}$ " pipe, the S.E. cor. of C. 43
 647 .343 W.

9
 8.000
 + 1.06' 3.926
 + 5.89
 12.260 + 1.196
 4.968
 11 \angle R. $22^{\circ}42'10'' = \angle$ in Road
 Back to Δ 9 - 5.89
 N. $0^{\circ}02'$
 Correction E 0.32'
 \angle L. $72^{\circ}28'$
 Correct line E. 0.2'
 \angle R. $72^{\circ}26'$ for line
 12
 4.852
 - 2.050
 23.582
 + 1.015
 .031
 Striking W. of corner

1.315
 11.165
 11.072
 .093
 19.505
 6.712 $\frac{1}{2}$ " pipe to S. of Hwy.
 S. of Hwy.
 N. of Hwy.
 offsets
 .096 E
 .190 E
 .286 E
 .543 W.
 1315
 18.190
 19.505
 1.093
 10.209
 7.432
 .549
 18.283
 29.355
 At \odot W. of rd. line & road
 Dist. \angle . $72^{\circ}28 \frac{1}{2}'$ \angle / $44^{\circ}57 \frac{1}{2}'$
 72.28 $\frac{1}{4}$
 24.185
 .120
 24.305
 12.260
 .120
 12.380
 11.791
 .589

31.126
 42
 45 \angle 242' \angle 158 \angle 06 \angle
 220 42' 10"
 00 10.9 = 0.53
 28.443 .031
 28.443 .022
 25.5700
 2.55983
 10.003
 .0267
 .0196
 4.846
 8.000
 8.000
 7.582
 .015
 28.443