

C.S. # 1518

See notes in file

F.B. 85-111



Book 85.

DICTIONARY

ENCHYRION

FIELD BOOK

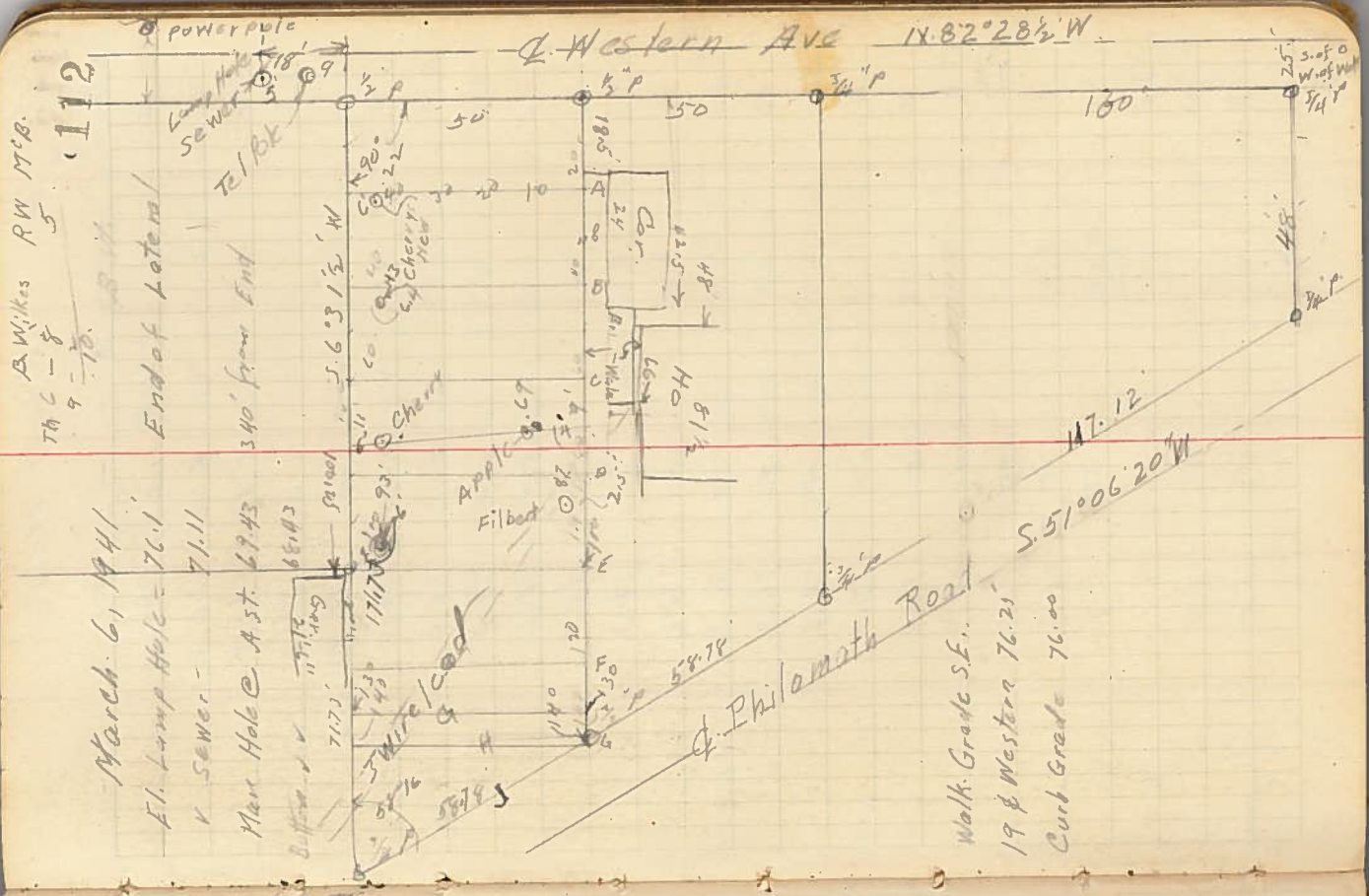
No. 40116

111 1518

Survey for Delbert Moore  
Between Western Ave & Philomath Road  
For Elevations & Objects as  
demanded by Architects

Sta	T	H.I	Elev
Sewer Flow Line		83.09 <del>84.09</del>	71.97
Walk to lot		11.12	76.25
V 7 Lot		6.84	76.53
5-5.7		6.56	78.54
5-5.10 W.T		4.55	77.3
5-5-20 W T		4.75	77.9
5-5-30 W		5.22	77.5
5-5-40 W		5.64	77.0
5-5-F		6.09	76.3
A 50		6.75	75.9
A 40		7.23	76.5
A 30		6.54	76.8
A 20		6.26	77.1
10		5.94	77.6
A 0		5.49	78.0
B 0		5.09	77.9
10		5.21	77.6
20		5.44	77.1
30		5.98	76.8
40		6.30	76.7
50		6.38	76.1
		7.0	

Power Pole  
8' 5.6' 3 1/2 W  
57'-S. 57° 06' 20" W  
from L. Lot  
Power Lines to Ho. E of lot



A. Wilkes RW M.B.  
70 9-8  
70  
(112)

March 6, 1941  
E.L. Lump Hole = 76.1  
V Sewer = 71.11  
Man Hole @ A St 67.43  
68.43

End of Lot  
340' from End

5.6' 3 1/2' W

Cherry  
Appl. & Filbert

58.78  
58.78

58.78  
58.78

58.78  
58.78

58.78  
58.78

58.78  
58.78

58.78  
58.78

58.78  
58.78

71.75  
71.75

71.75  
71.75

71.75  
71.75

71.75  
71.75

71.75  
71.75

71.75  
71.75

71.75  
71.75

71.75  
71.75

71.75  
71.75

Delbert Moore

Sta	T	E	8300	F/ey
C 50	8309	722	9.9	83.1 75.2
C 40		662	7.5	75.1
C 30		630	7.1	76.0
C 20		580	6.5	76.6
C 10		541	5.9	77.2
C 0		529	5.7	77.4
D 0		511	6.1	77.1
10		514	6.1	77.1
20		519	6.5	76.6
30		6.4	7.3	75.8
40		6.4	7.8	75.3
50		7.51	8.2	74.9
E 50		7.37	8.5	74.8
40		6.80	8.50	74.6
30		6.50	6.4	76.7
20		6.10	6.9	76.2
10		5.72	7.4	75.7
E 0		5.18	7.8	75.3
F 0		5.65	8.1	75.6
10		6.20	8.4	75.7
20		6.60	8.40	74.69
30		7.0	8.02	75.07
40		7.60	7.7	75.47
50		7.70	8.0	75.1
			8.1	75.1
			8.1	75.0
			8.1	74.9
			8.1	74.7
			8.1	74.6

20'S HSD  
 1.40 f JFR  
 31.75 HSD  
 3' N J 7'  
 3' N J 15  
 3' N J 25  
 3' N J 35  
 3' N J 45  
 3' N J 53  
 8.40 5 of L  
 8.02 2 of J  
 7.7 2.5 J 10  
 8.0 2.5 J 20  
 8.1 2.5 J 30  
 8.1 4.5 J 40  
 8.1 5 J 50  
 J 55

BH Rem

Sta	T	E	8300	F/ey
G 50				83.1 75.2
40				75.1
30				76.0
20				76.6
10				77.2
0				77.4
A 0				77.1
10				77.1
20				76.6
30				75.8
40				75.3
50				74.9
20'S HSD				74.8
1.40 f JFR				74.6
31.75 HSD				76.7
3' N J 7'				76.2
3' N J 15				75.7
3' N J 25				75.3
3' N J 35				75.6
3' N J 45				75.7
3' N J 53				74.69
8.40 5 of L				75.07
8.02 2 of J				75.47
7.7 2.5 J 10				75.1
8.0 2.5 J 20				75.1
8.1 2.5 J 30				75.0
8.1 4.5 J 40				74.9
8.1 5 J 50				74.7
J 55				74.6