

C.S. # 1542

Hardcopy 12-5 #35

also see notes in file

F.B. 94-18

F/B 94 PG 18-19
CS. 1542

18

1542

C.S. 303

Beg. at \odot on stone the SW. cor. of David Butterfield D.L.C. #47

T12-5

offset S. at lvs. 10 feet thence to \odot 10's. of N. $89^{\circ}25'4''$ E. parallel to Cl. line
1051.43

Set $\frac{1}{2}$ " pipe N. lvs 10' + 7.50 which is 40' W. of Φ of pavement
N. $89^{\circ}25'4''$ E. 31.42 To spike = 1090.35

to E. edge of top of steel bridge
N. $4^{\circ}38'4''$ E. at 10.04 X line 24.87 E. of $\frac{1}{2}$ " pipe
239.71

N. $88^{\circ}58'4''$ W. 24.79 set $\frac{1}{2}$ " pipe
N. $4^{\circ}38'4''$ E. 150.35 $\frac{1}{2}$ " pipe

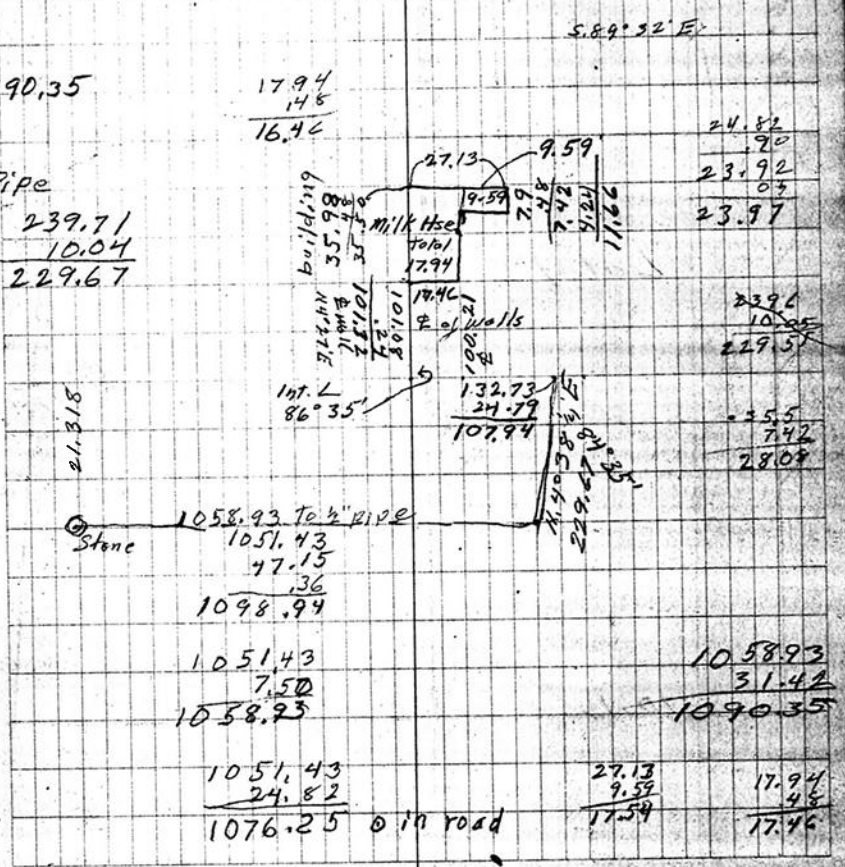
S. $69^{\circ}12'$ W. 37.03 $\frac{1}{2}$ " pipe at conc drive

N. $85^{\circ}32'$ W. 47.7 \odot on concrete Φ of wall
Building + 27.13 Φ of Wall S.

S. 4.19 Φ wall
+ 35.5 To Φ S. wall

For Tom. Whitehorn sept. 25, 1941.

S $89^{\circ}07'2''$ W. to s. edge of first post s. of brush \odot 40's. of cor. of R.R. P.W.
N. $88^{\circ}04'4''$ E. H. $88^{\circ}05'$ E.
T $0^{\circ}27'4''$ L at road 95' 13' to \odot 24.82 E. of $\frac{1}{2}$ " pipe at SE. cor. W. of Hwy. at Cete Tracts
190' 26'
295' 39'
4380' 52'
95' 13'



239.71
10.04
229.67

21.318

Stone 1058.93 To $\frac{1}{2}$ " pipe
1051.43
47.15
1098.94

1051.43
7.50
1058.93

1051.43
24.82
1076.25 \odot in road

S. $89^{\circ}32'$ E.

17.94
14.8
16.46

27.13
9.59
7.98
7.42
9.24
11.66

24.82
9.59
23.92
0.5
23.97

17.94
10.108
10.182
10.04
10.04
10.04

132.73
24.79
107.94

239.6
10.04
229.57

35.5
7.42
28.07

1058.93
31.42
1090.35

27.13
9.59
17.54

17.94
4.8
17.46