

C.S. # 1706

Hardcopy 12-6 # 26

also see notes in file

F. B.

44 141
-29
10.001

15931

9021

80

9200
8939

9200
-40
1253
N 49 E
9235
-3890 05 E
5 59 324
2 278

589032 E
90° 28

Set 9'x3" oak sk
34" fir SE 223
30" " SW 273
34" " N 29

Set 4'x4" pitch line

21 ocb / cts 116
25 HC

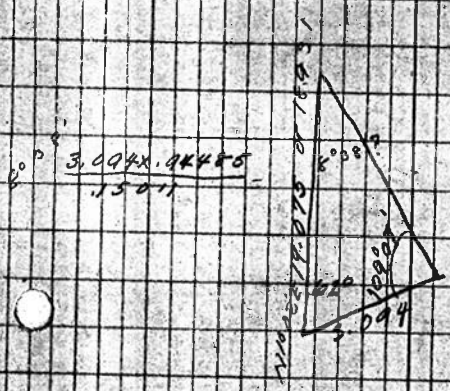
PRE 43
50 0685

7.00
1.00
2.00
3.00
4.00

856
0020

68

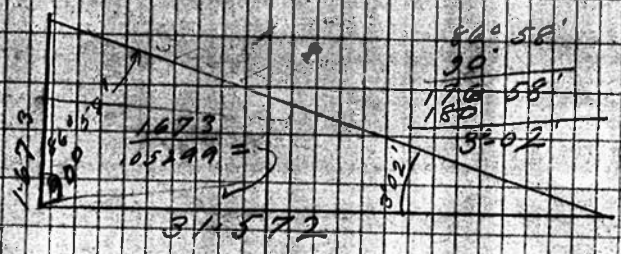
1706



109.07
68-
171.07
180.00
8° 53'

109.07
62° 15'
171.22
180
8° 38'

12.075
1.00
13.075



40.58'
90.
130.58'
180
50.02'

31.572

100' From Line IV to East Hub