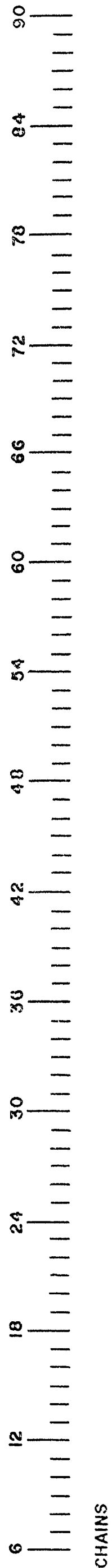


C.S. # 1747

Hardcopy 10-4 # Z4

also see notes in file

F. B. 41-18



017

20.00 20.00  
 5.00 5.00  
 +30  
 10.00 9.980  
 +30  
 5.141 5.133

41.113  
 10.028  
 5.014  
 15.044  
 90°13R

19.963  
 0  
 253

1/2 pipe  
 253W

4.15<sup>25</sup> 4.146  
 +30  
 5.00 4.995

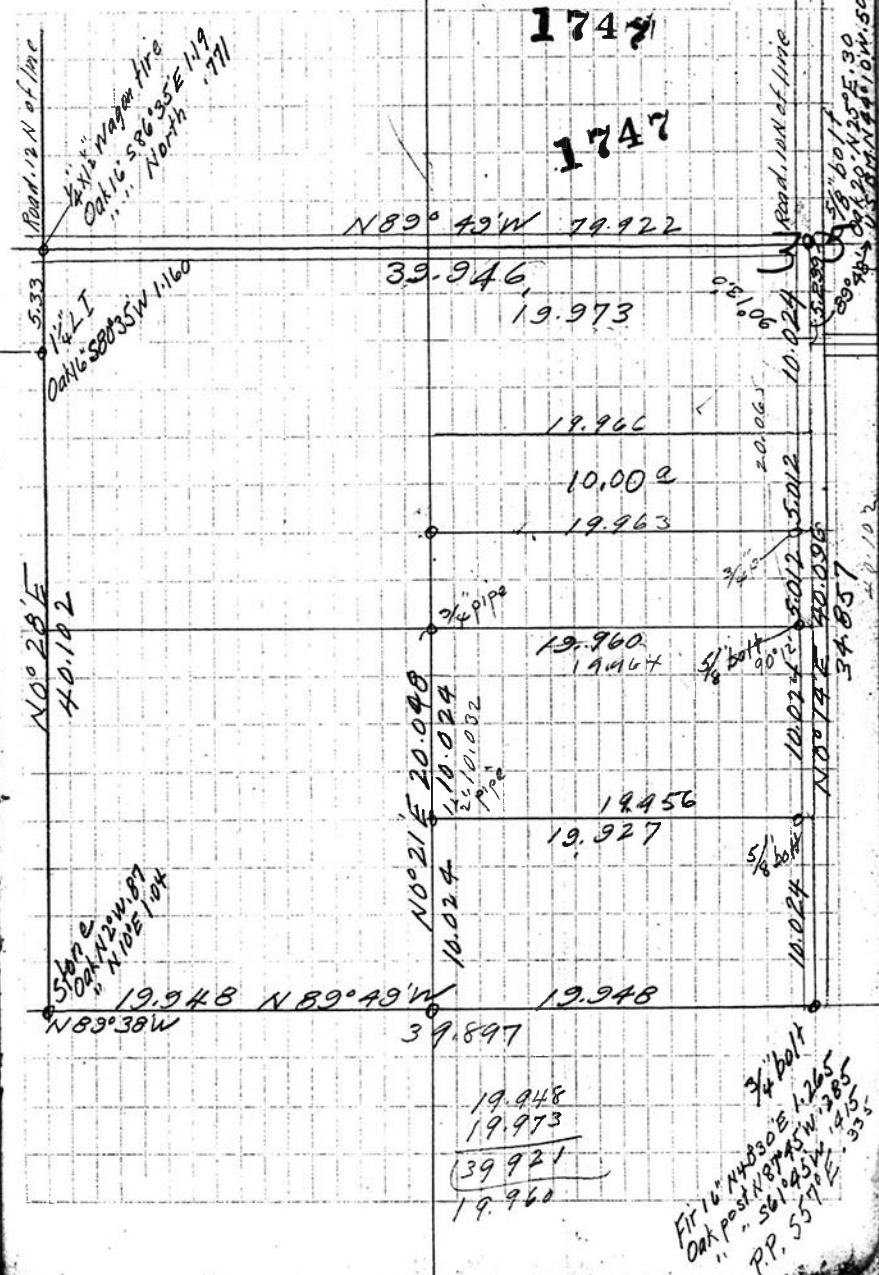
1'18'R  
 5.910  
 15.051  
 hit 109W of div cr.  
 134E

set E 109 & placed 1" pipe  
 193 S.

0827  
 591

Sec. 35-T10-H  
 C.S. 225

018



1747

1747

N89°49'W 79.922

39.946

19.973

19.966

10.002

19.963

19.960

19.964

19.956

19.927

19.948

N89°49'W

19.948

39.897

19.948

19.973

39.921

19.960

5/8 bolt  
 56 bolt  
 3/4 pipe  
 Firm #40305 1.265  
 Oak post N 89°45' W 385  
 PP. 5571 E 335