

47-11-5-sec. 23

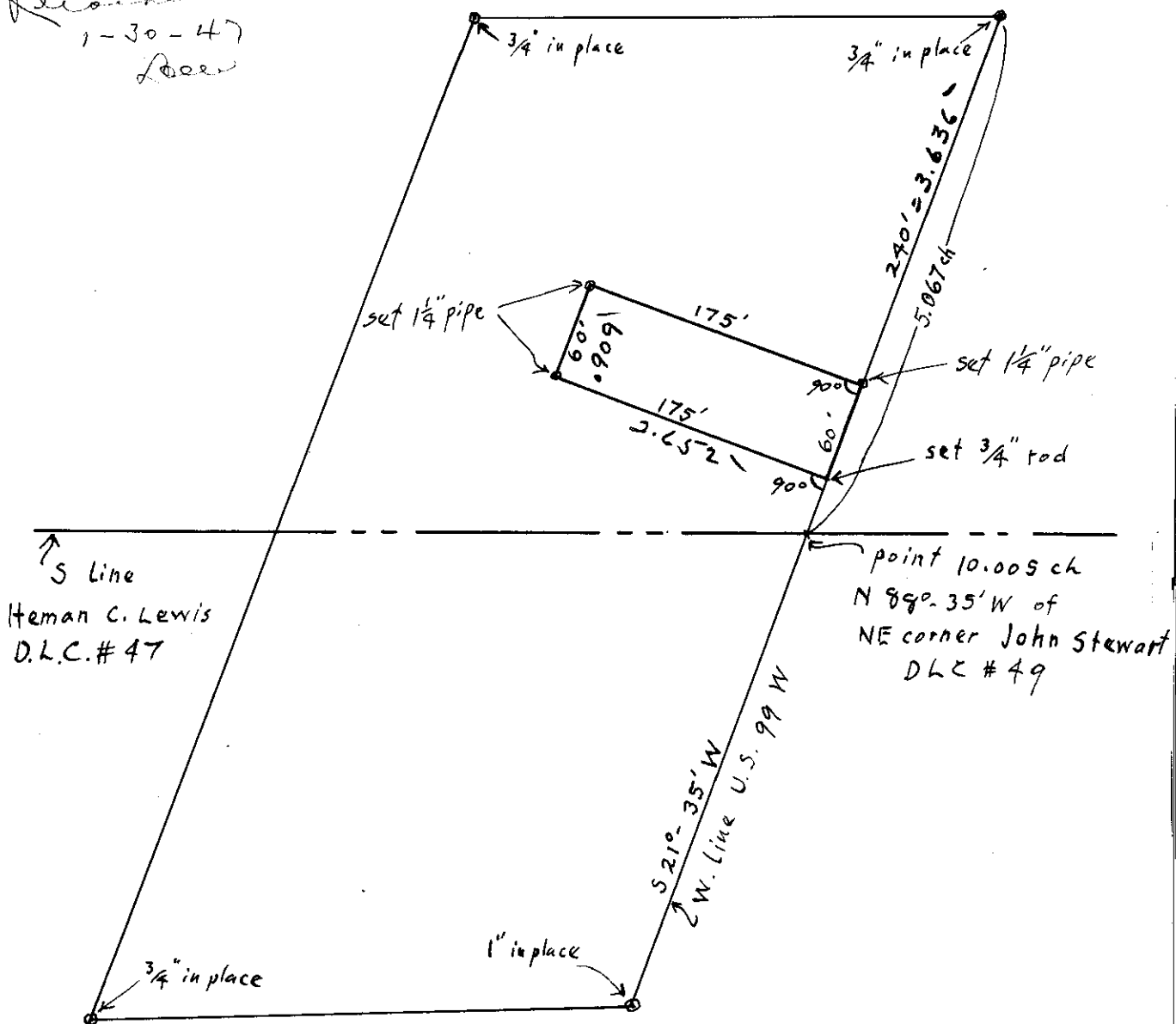
CS # 105-127

CS # 1800

OTTO H. MEYER
CIVIL ENGINEER
621 North 35th Street
CORVALLIS, OREGON

Aug. 22, 1946

Recorded
1-30-47
Lee



Survey Aug. 21, 1946, in Heman C. Lewis D.L.C. No. 47

