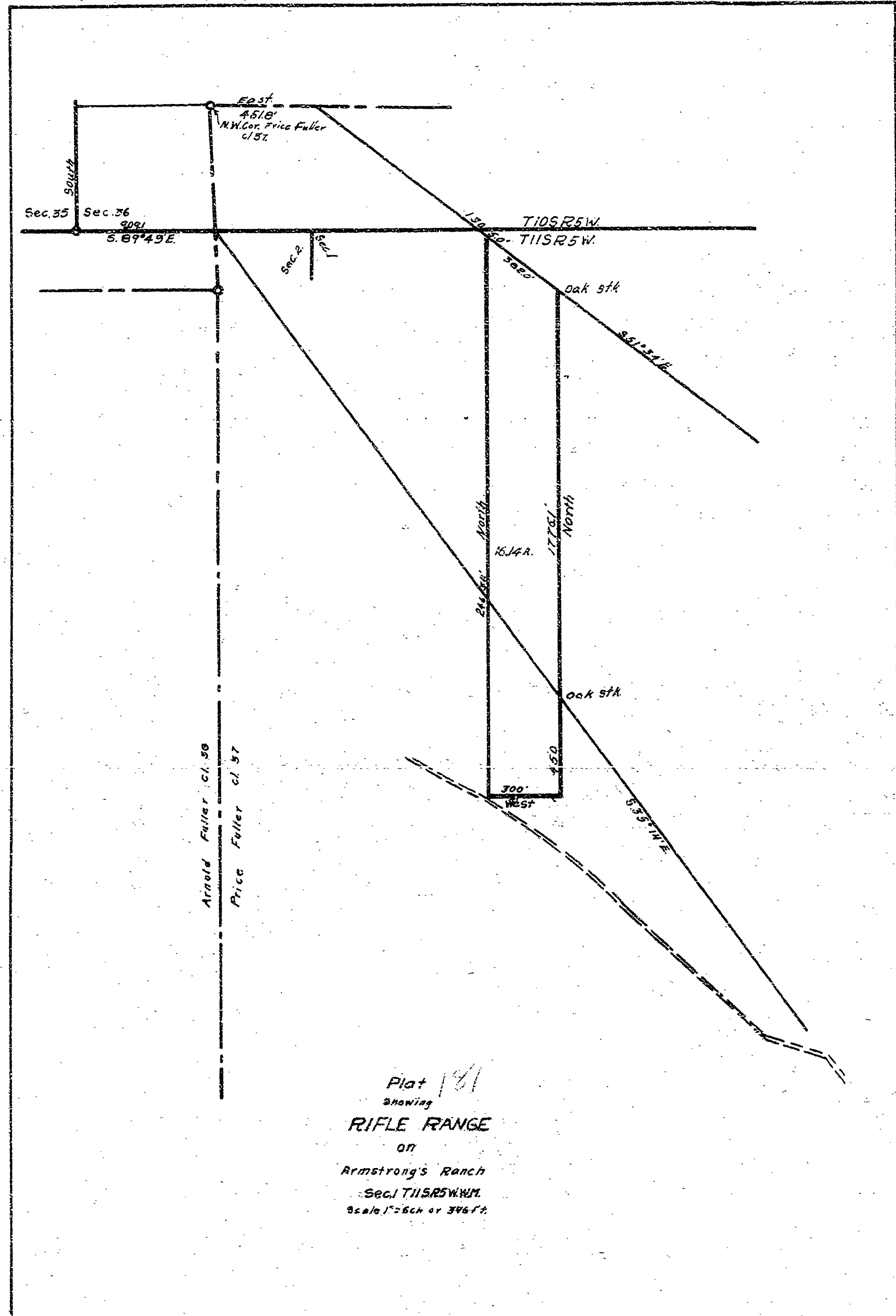


181

181



3.040 R. 888
 60.149 36899
 R. 7360 25032
 R. 736 R. 562
 31 R. 27
 1
 0.127 R. 439

1.838
 4.071
 R. 2700
 5.857
 15687
 17792
 112
 0.17591

13-59
 4.127
 0.179
 37143
 R. 888
 41
 40072
 2.773X
 42500
 13825
 39256
 58877

5.079 R. 40072
 0.015
 0.045
 0.091
 0.155
 0.245
 0.450
 0.600
 0.888
 1.015
 1.150
 1.270
 1.400
 1.530
 1.660

1.838
 4.071
 R. 2700
 5.857
 15687
 17792
 112
 0.17591
 13-59
 4.127
 0.179
 37143
 R. 888
 41
 40072
 2.773X
 42500
 13825
 39256
 58877

1.838
 4.071
 R. 2700
 5.857
 15687
 17792
 112
 0.17591
 13-59
 4.127
 0.179
 37143
 R. 888
 41
 40072
 2.773X
 42500
 13825
 39256
 58877

1.838
 4.071
 R. 2700
 5.857
 15687
 17792
 112
 0.17591
 13-59
 4.127
 0.179
 37143
 R. 888
 41
 40072
 2.773X
 42500
 13825
 39256
 58877

1.838
 4.071
 R. 2700
 5.857
 15687
 17792
 112
 0.17591
 13-59
 4.127
 0.179
 37143
 R. 888
 41
 40072
 2.773X
 42500
 13825
 39256
 58877

1.838
 4.071
 R. 2700
 5.857
 15687
 17792
 112
 0.17591
 13-59
 4.127
 0.179
 37143
 R. 888
 41
 40072
 2.773X
 42500
 13825
 39256
 58877

8.180
 3.857
 2 R. 243
 8.100
 7.412
 4.112
 1.114
 1.148
 1.651
 1.079

9-10 R. 009
 114
 148
 1651
 1079
 1-30
 13-59
 4.127
 0.179
 37143
 R. 888
 41
 40072
 2.773X
 42500
 13825
 39256
 58877

1.838
 4.071
 R. 2700
 5.857
 15687
 17792
 112
 0.17591
 13-59
 4.127
 0.179
 37143
 R. 888
 41
 40072
 2.773X
 42500
 13825
 39256
 58877

1.838
 4.071
 R. 2700
 5.857
 15687
 17792
 112
 0.17591
 13-59
 4.127
 0.179
 37143
 R. 888
 41
 40072
 2.773X
 42500
 13825
 39256
 58877

1.838
 4.071
 R. 2700
 5.857
 15687
 17792
 112
 0.17591
 13-59
 4.127
 0.179
 37143
 R. 888
 41
 40072
 2.773X
 42500
 13825
 39256
 58877

1.838
 4.071
 R. 2700
 5.857
 15687
 17792
 112
 0.17591
 13-59
 4.127
 0.179
 37143
 R. 888
 41
 40072
 2.773X
 42500
 13825
 39256
 58877

1.838
 4.071
 R. 2700
 5.857
 15687
 17792
 112
 0.17591
 13-59
 4.127
 0.179
 37143
 R. 888
 41
 40072
 2.773X
 42500
 13825
 39256
 58877

1.838
 4.071
 R. 2700
 5.857
 15687
 17792
 112
 0.17591
 13-59
 4.127
 0.179
 37143
 R. 888
 41
 40072
 2.773X
 42500
 13825
 39256
 58877

1.838
 4.071
 R. 2700
 5.857
 15687
 17792
 112
 0.17591
 13-59
 4.127
 0.179
 37143
 R. 888
 41
 40072
 2.773X
 42500
 13825
 39256
 58877

8.180
 3.857
 2 R. 243
 8.100
 7.412
 4.112
 1.114
 1.148
 1.651
 1.079

9-10 R. 009
 114
 148
 1651
 1079
 1-30
 13-59
 4.127
 0.179
 37143
 R. 888
 41
 40072
 2.773X
 42500
 13825
 39256
 58877

1.838
 4.071
 R. 2700
 5.857
 15687
 17792
 112
 0.17591
 13-59
 4.127
 0.179
 37143
 R. 888
 41
 40072
 2.773X
 42500
 13825
 39256
 58877

1.838
 4.071
 R. 2700
 5.857
 15687
 17792
 112
 0.17591
 13-59
 4.127
 0.179
 37143
 R. 888
 41
 40072
 2.773X
 42500
 13825
 39256
 58877

1.838
 4.071
 R. 2700
 5.857
 15687
 17792
 112
 0.17591
 13-59
 4.127
 0.179
 37143
 R. 888
 41
 40072
 2.773X
 42500
 13825
 39256
 58877

1.838
 4.071
 R. 2700
 5.857
 15687
 17792
 112
 0.17591
 13-59
 4.127
 0.179
 37143
 R. 888
 41
 40072
 2.773X
 42500
 13825
 39256
 58877

1.838
 4.071
 R. 2700
 5.857
 15687
 17792
 112
 0.17591
 13-59
 4.127
 0.179
 37143
 R. 888
 41
 40072
 2.773X
 42500
 13825
 39256
 58877

1.838
 4.071
 R. 2700
 5.857
 15687
 17792
 112
 0.17591
 13-59
 4.127
 0.179
 37143
 R. 888
 41
 40072
 2.773X
 42500
 13825
 39256
 58877

1.838
 4.071
 R. 2700
 5.857
 15687
 17792
 112
 0.17591
 13-59
 4.127
 0.179
 37143
 R. 888
 41
 40072
 2.773X
 42500
 13825
 39256
 58877

Bin 2
 1 77° 34' 16° 35' 10.205
 2 77° 26' 16° 47' 6h 05M 10.205
 3 77° 49' 17° 04' 7.9
 4 77° 44' 17° 03' 6
 5 76° 58' 16° 48' 17'
 6 76° 23' 15° 40'
 7 76° 17' 15° 35'
 8 76° 44' 16° 00'
 9 76° 37' 15° 54'
 10 76° 44' 16° 00'
 11 76° 51' 15° 54'
 12 76° 51' 15° 54'
 13 76° 51' 15° 54'
 14 76° 51' 15° 54'
 15 76° 51' 15° 54'
 16 76° 51' 15° 54'
 17 76° 51' 15° 54'
 18 76° 51' 15° 54'
 19 76° 51' 15° 54'
 20 76° 51' 15° 54'
 21 76° 51' 15° 54'
 22 76° 51' 15° 54'
 23 76° 51' 15° 54'
 24 76° 51' 15° 54'
 25 76° 51' 15° 54'
 26 76° 51' 15° 54'
 27 76° 51' 15° 54'
 28 76° 51' 15° 54'
 29 76° 51' 15° 54'
 30 76° 51' 15° 54'
 31 76° 51' 15° 54'
 32 76° 51' 15° 54'
 33 76° 51' 15° 54'
 34 76° 51' 15° 54'
 35 76° 51' 15° 54'
 36 76° 51' 15° 54'
 37 76° 51' 15° 54'
 38 76° 51' 15° 54'
 39 76° 51' 15° 54'
 40 76° 51' 15° 54'
 41 76° 51' 15° 54'
 42 76° 51' 15° 54'
 43 76° 51' 15° 54'
 44 76° 51' 15° 54'
 45 76° 51' 15° 54'
 46 76° 51' 15° 54'
 47 76° 51' 15° 54'
 48 76° 51' 15° 54'
 49 76° 51' 15° 54'
 50 76° 51' 15° 54'
 51 76° 51' 15° 54'
 52 76° 51' 15° 54'
 53 76° 51' 15° 54'
 54 76° 51' 15° 54'
 55 76° 51' 15° 54'
 56 76° 51' 15° 54'
 57 76° 51' 15° 54'
 58 76° 51' 15° 54'
 59 76° 51' 15° 54'
 60 76° 51' 15° 54'
 61 76° 51' 15° 54'
 62 76° 51' 15° 54'
 63 76° 51' 15° 54'
 64 76° 51' 15° 54'
 65 76° 51' 15° 54'
 66 76° 51' 15° 54'
 67 76° 51' 15° 54'
 68 76° 51' 15° 54'
 69 76° 51' 15° 54'
 70 76° 51' 15° 54'
 71 76° 51' 15° 54'
 72 76° 51' 15° 54'
 73 76° 51' 15° 54'
 74 76° 51' 15° 54'
 75 76° 51' 15° 54'
 76 76° 51' 15° 54'
 77 76° 51' 15° 54'
 78 76° 51' 15° 54'
 79 76° 51' 15° 54'
 80 76° 51' 15° 54'
 81 76° 51' 15° 54'
 82 76° 51' 15° 54'
 83 76° 51' 15° 54'
 84 76° 51' 15° 54'
 85 76° 51' 15° 54'
 86 76° 51' 15° 54'
 87 76° 51' 15° 54'
 88 76° 51' 15° 54'
 89 76° 51' 15° 54'
 90 76° 51' 15° 54'
 91 76° 51' 15° 54'
 92 76° 51' 15° 54'
 93 76° 51' 15° 54'
 94 76° 51' 15° 54'
 95 76° 51' 15° 54'
 96 76° 51' 15° 54'
 97 76° 51' 15° 54'
 98 76° 51' 15° 54'
 99 76° 51' 15° 54'
 100 76° 51' 15° 54'

7 10/10
 36 1.243
 37 1.122
 38 536-10-2412-7-40 7.584
 39 536-50-2115-3-20 8.000
 40 536-55-E-130 8.000
 41 536-55-E-130 8.000
 42 537-11-E-6-10 8.078
 43 536-20-E-7-10 4.841
 44 536-20-E-7-10 5.203
 45 536-20-E-7-10 5.203
 46 536-20-E-7-10 5.203
 47 536-20-E-7-10 5.203
 48 536-20-E-7-10 5.203
 49 536-20-E-7-10 5.203
 50 536-20-E-7-10 5.203
 51 536-20-E-7-10 5.203
 52 536-20-E-7-10 5.203
 53 536-20-E-7-10 5.203
 54 536-20-E-7-10 5.203
 55 536-20-E-7-10 5.203
 56 536-20-E-7-10 5.203
 57 536-20-E-7-10 5.203
 58 536-20-E-7-10 5.203
 59 536-20-E-7-10 5.203
 60 536-20-E-7-10 5.203
 61 536-20-E-7-10 5.203
 62 536-20-E-7-10 5.203
 63 536-20-E-7-10 5.203
 64 536-20-E-7-10 5.203
 65 536-20-E-7-10 5.203
 66 536-20-E-7-10 5.203
 67 536-20-E-7-10 5.203
 68 536-20-E-7-10 5.203
 69 536-20-E-7-10 5.203
 70 536-20-E-7-10 5.203
 71 536-20-E-7-10 5.203
 72 536-20-E-7-10 5.203
 73 536-20-E-7-10 5.203
 74 536-20-E-7-10 5.203
 75 536-20-E-7-10 5.203
 76 536-20-E-7-10 5.203
 77 536-20-E-7-10 5.203
 78 536-20-E-7-10 5.203
 79 536-20-E-7-10 5.203
 80 536-20-E-7-10 5.203
 81 536-20-E-7-10 5.203
 82 536-20-E-7-10 5.203
 83 536-20-E-7-10 5.203
 84 536-20-E-7-10 5.203
 85 536-20-E-7-10 5.203
 86 536-20-E-7-10 5.203
 87 536-20-E-7-10 5.203
 88 536-20-E-7-10 5.203
 89 536-20-E-7-10 5.203
 90 536-20-E-7-10 5.203
 91 536-20-E-7-10 5.203
 92 536-20-E-7-10 5.203
 93 536-20-E-7-10 5.203
 94 536-20-E-7-10 5.203
 95 536-20-E-7-10 5.203
 96 536-20-E-7-10 5.203
 97 536-20-E-7-10 5.203
 98 536-20-E-7-10 5.203
 99 536-20-E-7-10 5.203
 100 536-20-E-7-10 5.203

101 536-20-E-7-10 5.203
 102 536-20-E-7-10 5.203
 103 536-20-E-7-10 5.203
 104 536-20-E-7-10 5.203
 105 536-20-E-7-10 5.203
 106 536-20-E-7-10 5.203
 107 536-20-E-7-10 5.203
 108 536-20-E-7-10 5.203
 109 536-20-E-7-10 5.203
 110 536-20-E-7-10 5.203
 111 536-20-E-7-10 5.203
 112 536-20-E-7-10 5.203
 113 536-20-E-7-10 5.203
 114 536-20-E-7-10 5.203
 115 536-20-E-7-10 5.203
 116 536-20-E-7-10 5.203
 117 536-20-E-7-10 5.203
 118 536-20-E-7-10 5.203
 119 536-20-E-7-10 5.203
 120 536-20-E-7-10 5.203
 121 536-20-E-7-10 5.203
 122 536-20-E-7-10 5.203
 123 536-20-E-7-10 5.203
 124 536-20-E-7-10 5.203
 125 536-20-E-7-10 5.203
 126 536-20-E-7-10 5.203
 127 536-20-E-7-10 5.203
 128 536-20-E-7-10 5.203
 129 536-20-E-7-10 5.203
 130 536-20-E-7-10 5.203
 131 536-20-E-7-10 5.203
 132 536-20-E-7-10 5.203
 133 536-20-E-7-10 5.203
 134 536-20-E-7-10 5.203
 135 536-20-E-7-10 5.203
 136 536-20-E-7-10 5.203
 137 536-20-E-7-10 5.203
 138 536-20-E-7-10 5.203
 139 536-20-E-7-10 5.203
 140 536-20-E-7-10 5.203
 141 536-20-E-7-10 5.203
 142 536-20-E-7-10 5.203
 143 536-20-E-7-10 5.203
 144 536-20-E-7-10 5.203
 145 536-20-E-7-10 5.203
 146 536-20-E-7-10 5.203
 147 536-20-E-7-10 5.203
 148 536-20-E-7-10 5.203
 149 536-20-E-7-10 5.203
 150 536-20-E-7-10 5.203

9
 at 67-31.5 oak all 3 x 6 x 18
 5" N. 88° E 1025
 oak 7" 53-45 W 103
 " 8" 149-14 1839
 oak 7" 89-49 NW 8777
 7- 3551
 +16-30 3.187
 70 Thu 2-40 8.182
 71 Thurs 70.000y con. 6310
 72 7.18 Study Wed. 037

Continued on Pg 48 of FB 13

and

3.5551
 55299
 31759
 3195
 71
 17
 3.5243
 3.5551
 6.310
 96789
 56799
 5041
 441
 37
 35
 6.83860
 311605
 18448
 21492
 232561

8.127
 1.522
 2.253
 2.40
 2.188
 7899
 19638
 19633
 174
 19
 2.1794
 3.1794
 15253
 1885
 1008132
 032
 1036
 8.501
 7.870
 7.998
 5.553
 4.459
 2.561
 6.042
 5.096
 2.644
 3.850
 6.516
 7.995
 7.994
 2.352
 7.900
 8.133
 1.315
 81.016

N-40 W