

c.s. # 1865

See notes in file

F.B.

(25f) 36-10-4

For Nick Klaus et al.

2-6-97

1865

47-11

LINE DATE

PARTY

Beyerlin
wells

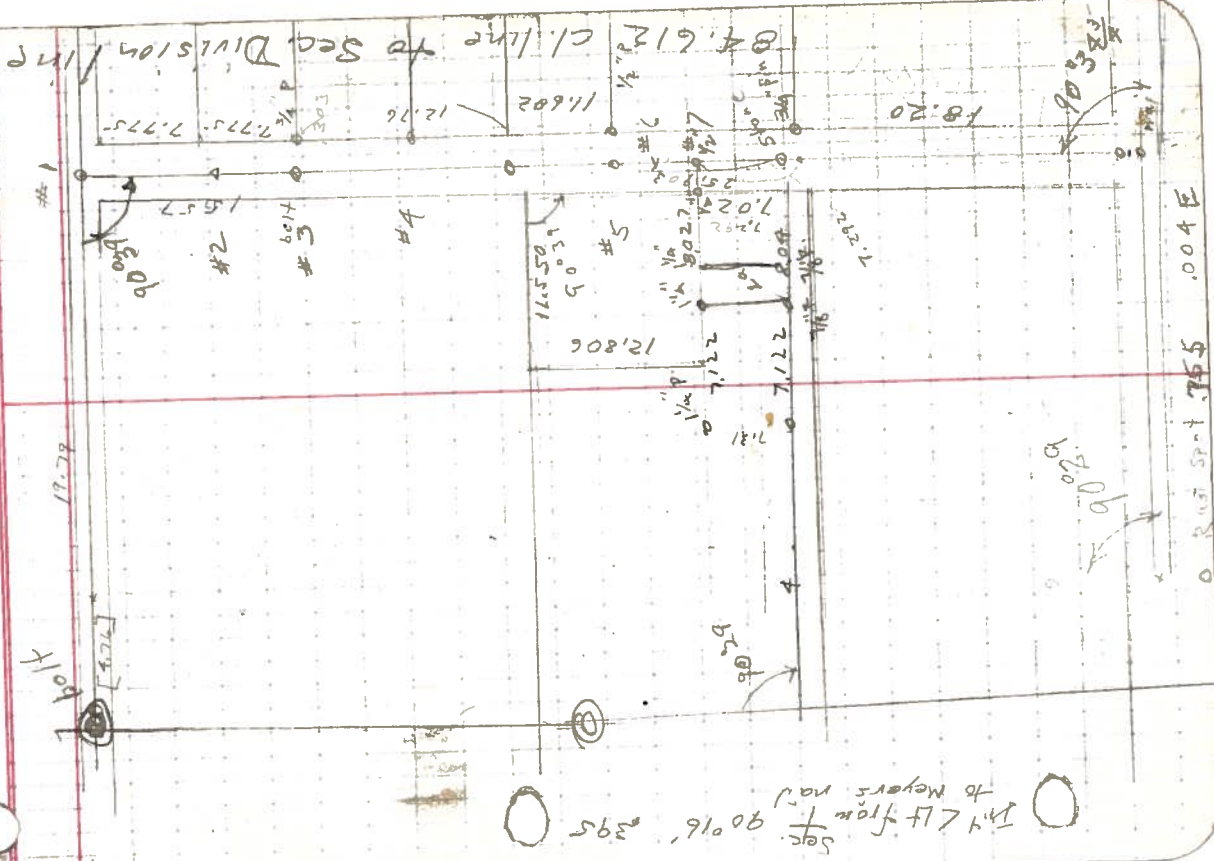
PROJECT

Klaus et al

9	edge of oil	to + cl. line	-	.171	.171
			-	5.054	5.054
			+1°50'	8.000	7.996
			+0°16'	8.000	8.000
8			+4°06'	4.803	4.791
7	pt. to cur.		-	6°8'13"	6.813
6			-	3.953	3.953
			-3°05'	8.000	7.988
5			-1°26'	9.107	9.109
			-2°12'	8.000	7.994
4	0.00 E line		-1°01'	7.193	7.092
3			-3°33'	8.000	7.985
2			-3°33'	7.586	7.571
1					
					to pt

5.179 to nail (4 cor)

7.312



47-11 LINE DATE PARTY

PROJECT Velma Wright

LINE	DATE	PARTY
W	-	3,523 3,523
N	-	7,697 7,697
	-3830	5,119 5,109
∠ RT 61° 29'		1,183
	-	2,530 2,530
	+1093'	7,989 7,985
∠ RT 90° 35'		5,700
	-3° 55'	2,674 2,668
	-	3,322 3,322

47-11 LINE DATE PARTY

PROJECT

Wright

2a	Int \angle RT from	3 - 89° 58' 1/2"	To nail 15" N of 1/2" P. in fld.	0
2	N	—	.227	0
back to				
3	3/8" rod 1/4 Sec. cor	36	35	5.905
		—	—	6.000
		—	—	6.000
	N	—	—	8.000
2		—	—	6.200
	N	—	—	8.000
1	(3/8" boll center Sec. 35)			0

47-11 LINE DATE PARTY

PROJECT

REMARKS

2 RA 90° 29' E 4.76
3 15' offset .227
Set granite stone ^{Set} + .018
1.5" x 2 x 3 bands — 6.220
N to Soc. Cor — 8.000

Now Set 2" p 8" Surt drove shaft into 3" SWA
Set nail edge of oil 0.75
Drove 1/2" rod in obvious hole of 1" pipe
(rusted out)

