

C.S. # 1883

Willamette Dale Farms  
Tract 2

F.B.

47-12-D

Tract 2

PARTY

DATE

LINE

Williamstedale Farm

Walker

Clyde

PROJECT

4-3-47

SIERRA FORM P-172

1883

LINE DATE PARTY

PROJECT

MINHAM FORM 1-1-22

7	-	7.978	
6	-	8.36	"ball beat out of top"
6	ERY 25°55'		
5	I.L.L.H 117°35' from 4	7.994	
5	I.L.L.H 68°26' 3/4" P	4.79	
	1/2" R.A.P.	3.1676	
		8.000	
		8.000	
		8.000	
4	I.L.R.V X RR rd. 126°42'	8.159	
3	-	8.159	
2	-	7.724	
	-	8.000	
	+2°33'	4.560	
	-	8.000	
1	1/8" I rd. 007W of 1/4 P SW cor 12		

180186  
240558  
400930  
4249858  
224

1776  
180186  
262  
2096  
4614000  
4666666  
9333333  
70000  
21000

131660000  
5877740  
336240  
320744  
184960  
80186  
747740

18883  
1620747954  
1599120  
1620747954

117835  
170060  
6225  
7978  
7775  
1203

94901  
455  
599406  
499505  
1399604  
45554852

180187  
27676  
481122  
561309  
481122  
561309  
160374

27676  
159751  
27676  
138380  
193732  
349084  
138380  
1654668676

2218775412  
180186  
2896  
19989  
16419  
357  
27691  
180186  
64188  
240558  
13048068  
19989  
180186  
119934  
159989  
1599120  
1620747954  
75642  
479  
679778  
529494  
568  
7020  
7755  
7775  
199774  
426  
598644  
199548  
399096  
42503724  
27676  
159751  
27676  
138380  
193732  
349084  
138380  
1654668676

19989  
16419  
357  
27691  
180186  
64188  
240558  
13048068  
19989  
180186  
119934  
159989  
1599120  
1620747954  
75642  
479  
679778  
529494  
568  
7020  
7755  
7775  
199774  
426  
598644  
199548  
399096  
42503724  
27676  
159751  
27676  
138380  
193732  
349084  
138380  
1654668676

19989  
16419  
357  
27691  
180186  
64188  
240558  
13048068  
19989  
180186  
119934  
159989  
1599120  
1620747954  
75642  
479  
679778  
529494  
568  
7020  
7755  
7775  
199774  
426  
598644  
199548  
399096  
42503724  
27676  
159751  
27676  
138380  
193732  
349084  
138380  
1654668676

PARTY

LINE DATE

PROJECT

KULHAM FORM 0-177

8.00  
6.912  
1.088

E RR to E P .946

fd 3/4" E line RR  
.950 from E RR

0.8 links along RR RW for  
return

# 2

5/8" Rod Int LY 93°02' 1/2"  
SW Cor 12.55 tract

Δ Int LY 100°50"  
(wiggled in on line #7 easterly through #4 P NW 1/2)

3/4" P N.W. Cor 12°

-3°51' 4.259 4.249

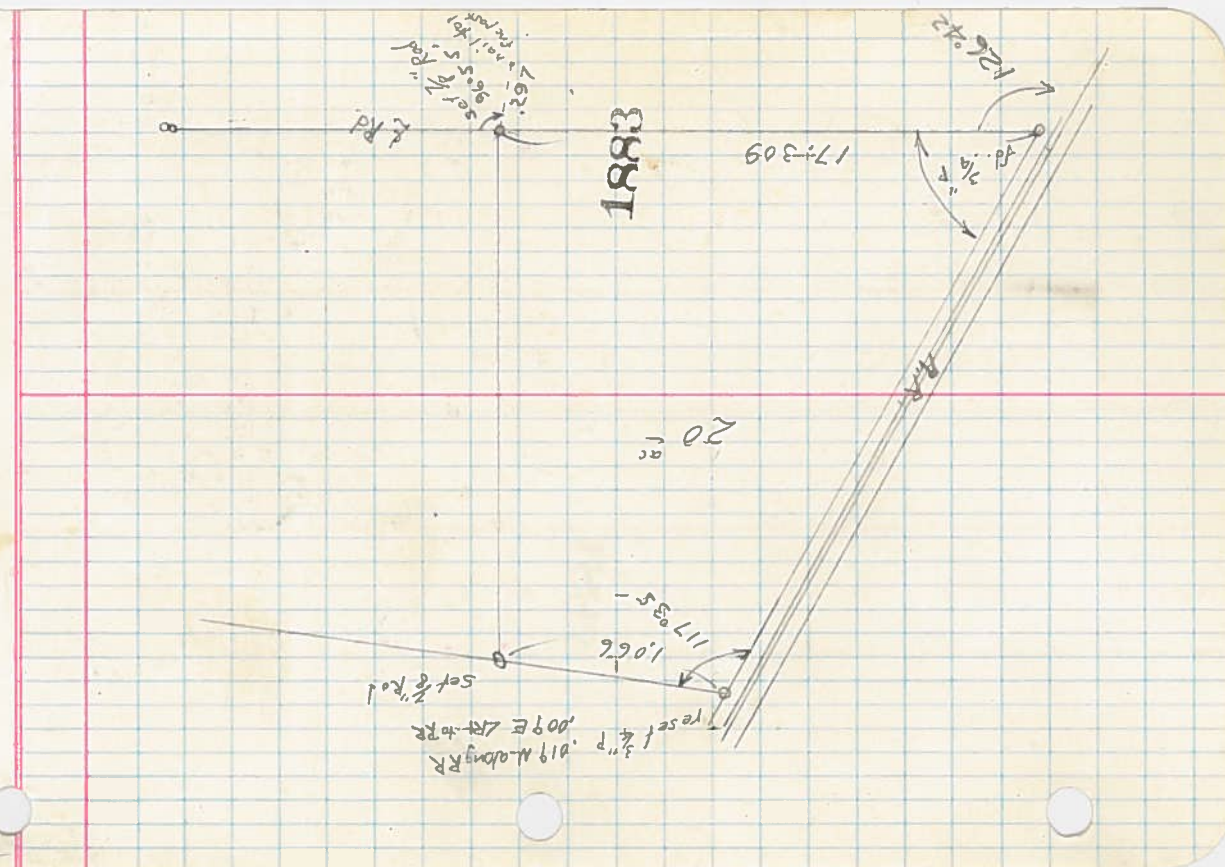
7 LRT 4°45 1/2' from #6

3/4" P

- 418

7 Int LY from #6 60°08'

-  
-



1883

17:309

20  
80

set 3/4" rod  
1960  
1961  
1962  
1963  
1964  
1965  
1966  
1967  
1968  
1969  
1970  
1971  
1972  
1973  
1974  
1975  
1976  
1977  
1978  
1979  
1980  
1981  
1982  
1983  
1984  
1985  
1986  
1987  
1988  
1989  
1990  
1991  
1992  
1993  
1994  
1995  
1996  
1997  
1998  
1999  
2000

reset 3/4" P  
0.19 M. along RR  
1009 E LRT to RR  
set 3/4" Rod

117°35'

1.066

126°42'

17:309