

C.S. # 1914

Hardcopy 12-5 # 33

also see notes in file

F. B.

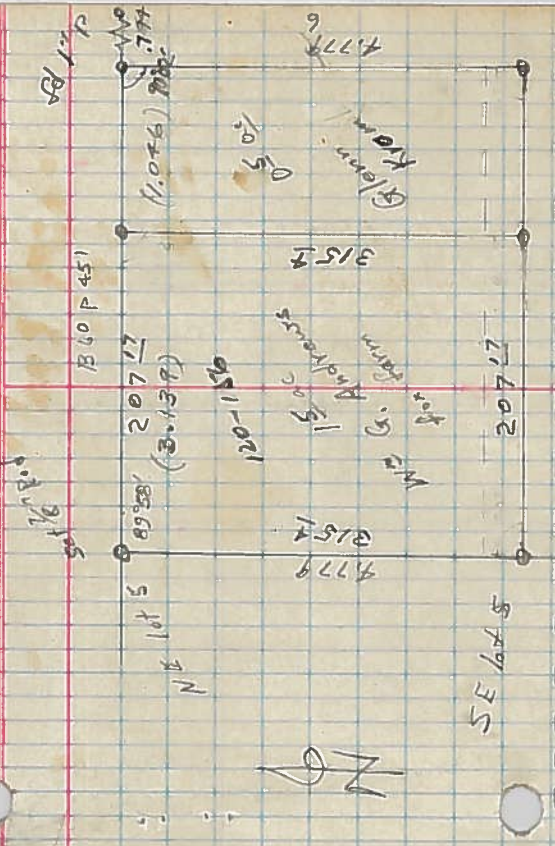
LINE DATE _____ PARTY _____

PROJECT _____

6	17p 24p 29					
5	Int L 4	89.94'	-	4.878		
4			-	4.799		
3			-	.606		
2			(Int L/R) + 90°	4.779		
1			(Int L/R) 90° 113 to 4p 14p	2.503	15.248	
				7.966		
			Neil & Int L + 90° from split of 8 pipes E			
			Road NW 1/4 E of SE Cor. Curver Tract			
			Neil 1037			
			E of 3/4 p S. of Road.	16.998		
			Neil SE Curver Cor E			
			3/4 p E	2.378		

3/17/92
89.74

11.036
11.932



at 1" p bent (straightened it)
redrawn in old hole

Neil & Licks
Glenn - 1/2'

16.07
-216 offset S
-2398

line goes through the 2nd vert. in bridge on
east wall N. of third post N. of BM on 216 offset
S. of N line of 40' road
E. N edge of 8th vert S. of said post

PROJECT

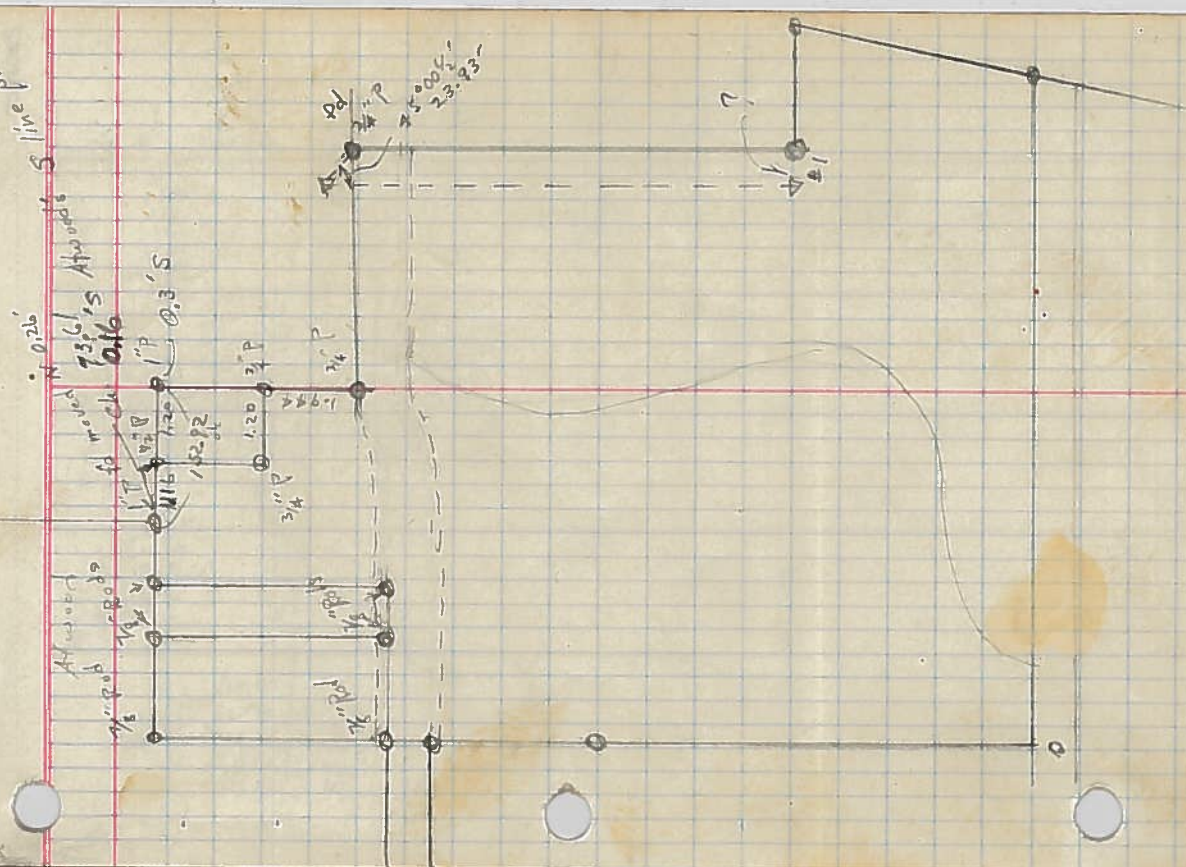
LINE DATE

PARTY

PROJECT

LINE DATE

PARTY



PROJECT _____ LINE DATE _____ PARTY _____

PROJECT

DATE

199984 1994

331146 66

599909 1188

299987 28304

199953

3214085517 198027

67752 490134

2393

203255

60768

1355504

162130536

2 125017

870384

2 61030

5075

15000 1/2

87038 1/2

132039

179060

47021

1116

66

6696

6696

73056

1994

66

1188

28304

198027

490134

2393

203255

60768

1355504

162130536

66

599

32141

27257

22329

49030

1621

33009

19013 34 362

2 57006

28033

17382

2 75057

3 20050

657

2 81026

42013

2 29057

14584

2 12054

6057

2 99023

7941 1/2

LINE DATE

PARTY

PROJECT

RECORD FORM 1-1-52

Δ₇ Atwoods SW at Hwy thru Lilly NW (Rd)

Δ₆ 1" Lt 60°35'

Atwood SE

157.85

Δ₅ 3/4" Lt 130°41'

LINE DATE PARTY

PROJECT

REMARKS

ditch Δ_1					92.00
ditch Δ_5 \angle RT	34°36'				82.97
ditch Δ_4 \angle RT	72°35'				121.82
ditch Δ_3 \angle LT	14°58'				87.41
ditch Δ_{12} \angle RT	17°58'				95.17
ditch Δ_6 \angle LT	42°13'				168.03
ditch Δ_{11} \angle RT	6°57'				117.42
ditch Δ_9 \angle LT	49°41'				130.21
ditch Δ_8 \angle LT	28°33'	from Δ_5			251.82
Δ (\angle RT)	98'	ditch			(138)
Δ_3	14' \angle LT	30°45'			from Δ_4