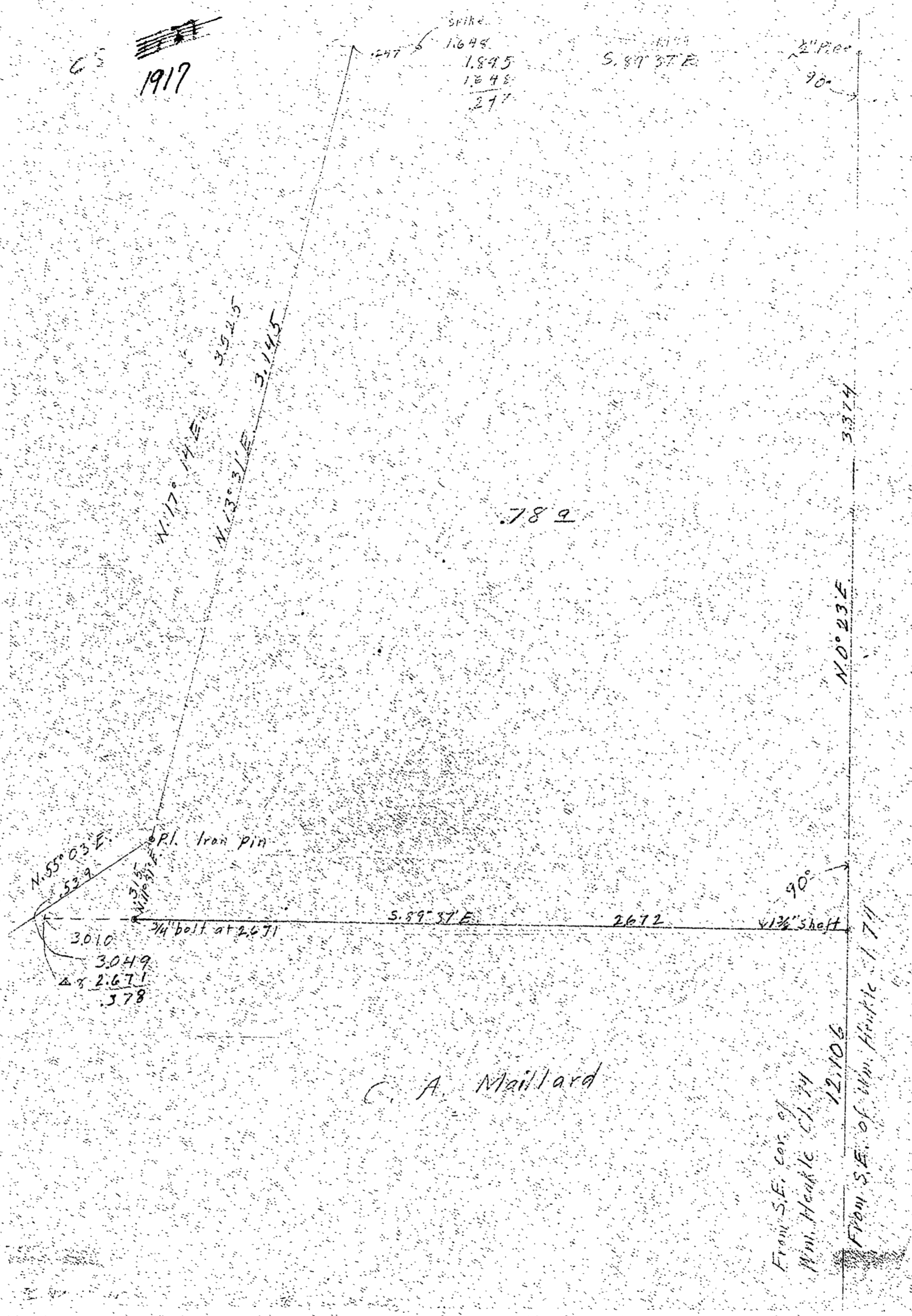
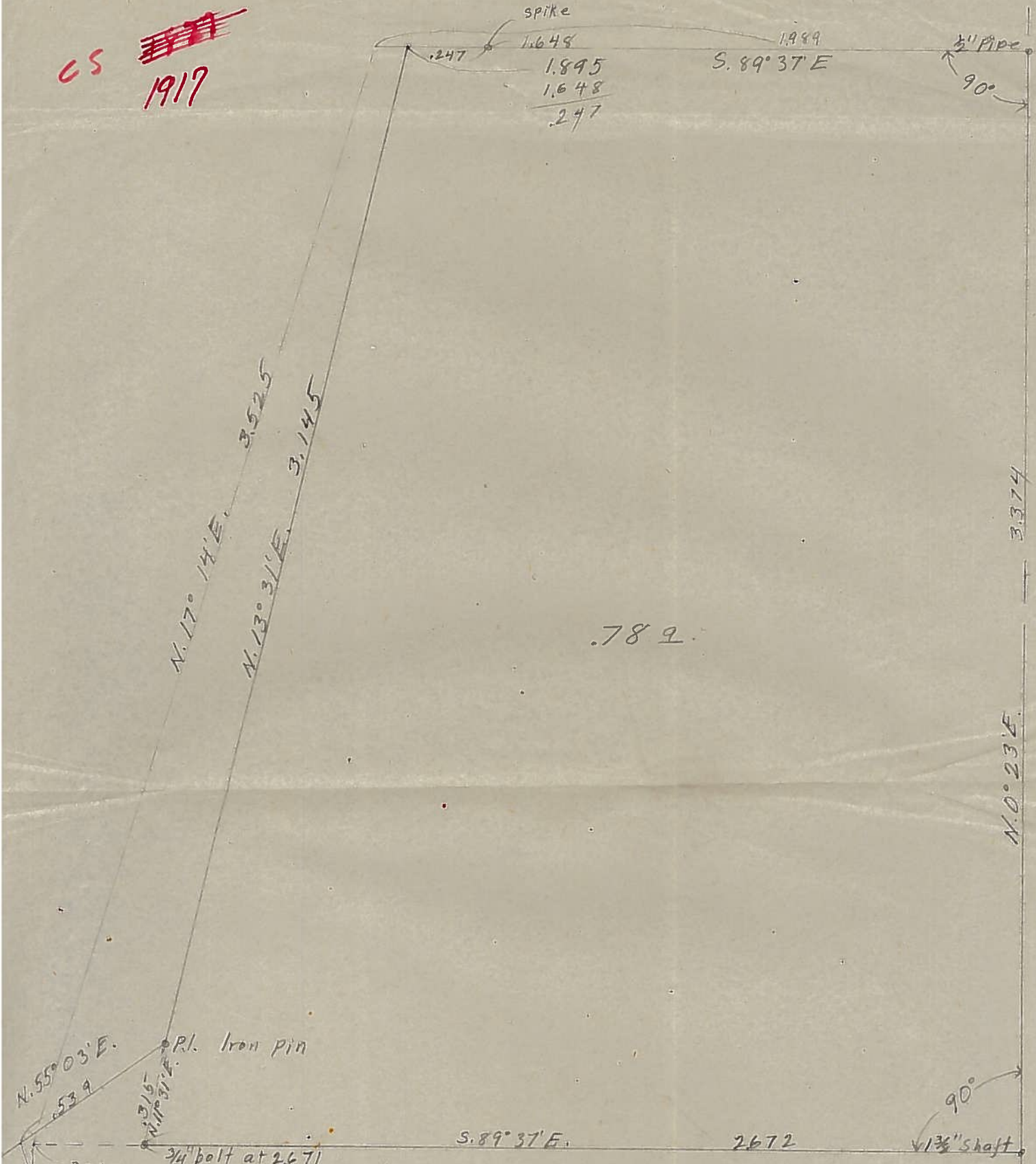


1" = 6 CHAINS



RFFI 12 FRAME 79

CS ~~1917~~
1917



spike
1.645
1.895
1.648
2.47

1.999
S. 89° 37' E

1/2" Pipe
90°

N. 17° 14' E. 3.525
N. 13° 31' E. 3.145

.789

3.374

N. 0° 23' E.

N. 55° 03' E. 3.010
3.049
- 2.671
.378

Pr. Iron pin
3/4" bolt at 2.671

S. 89° 37' E. 2.672

90°
1 3/4" shaft

C. A. Maillard

From S.E. cor. of
Wm. Henkle Ch. 74
12.106
From S.E. of Wm. Henkle Ch. 74