

C.S. # 1944

Hardcopy 11-4 # 19

also see notes in file

F. B. 49-89

Book 49

THS. R4W

FIELD BOOK

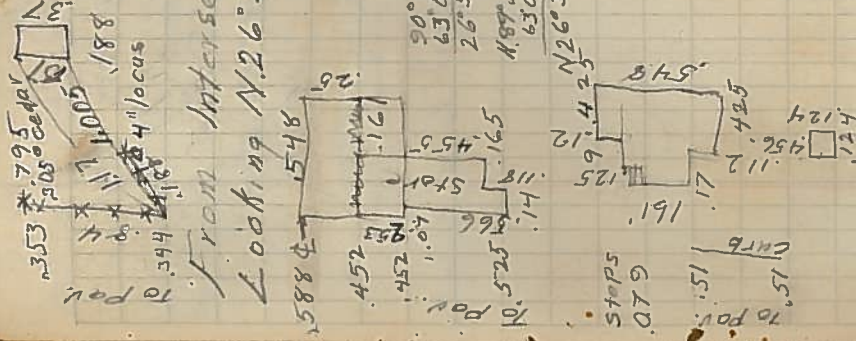
361 A

C. S. 26
Willamette Dale Farm
Tie of Hwy. with tracts
and buildings on Tract 16

-40' 7.113 = 7112.4
519 W.
6.602 W-N.

N. 89° 38' E. L L. 63° 06' = N. 26° 32' E
126° 11 1/2'

S. 26° 32' W. 6.757
* Road &
to P.P.
Set 3/8" bolt at P.P. about 2' N. of Cen.
of Building W. and 1.3' in pavement
from east side.



From Intersection of both roads
Looking N. 26° 32' E.
N.W. cor.
store 1.761
1.0668
S.M. store
L R 83° 30' 654 X cor. curb
L R 94° 30' 1138' N.W. cor. H.
L R 113° 46' 1308' S.M. " Hse
L R 185° 04' 914 S. end curb
L R 137° 150 20' B. Walnut

14" B. Walnut 0.33 W. 7.235 N.
of S.W. cor. bldg.

L R 58° 44' 1.371 B Walnut
L R 88° 56' 1.143 "
L R 115° 23' 1.188 "
L R 133° 36' 2.044 Cor. house

118
455
1019
1400
823

489 = 32.27
353
751
474

89 1/2 = 0.84
480 = 31.68
344
131