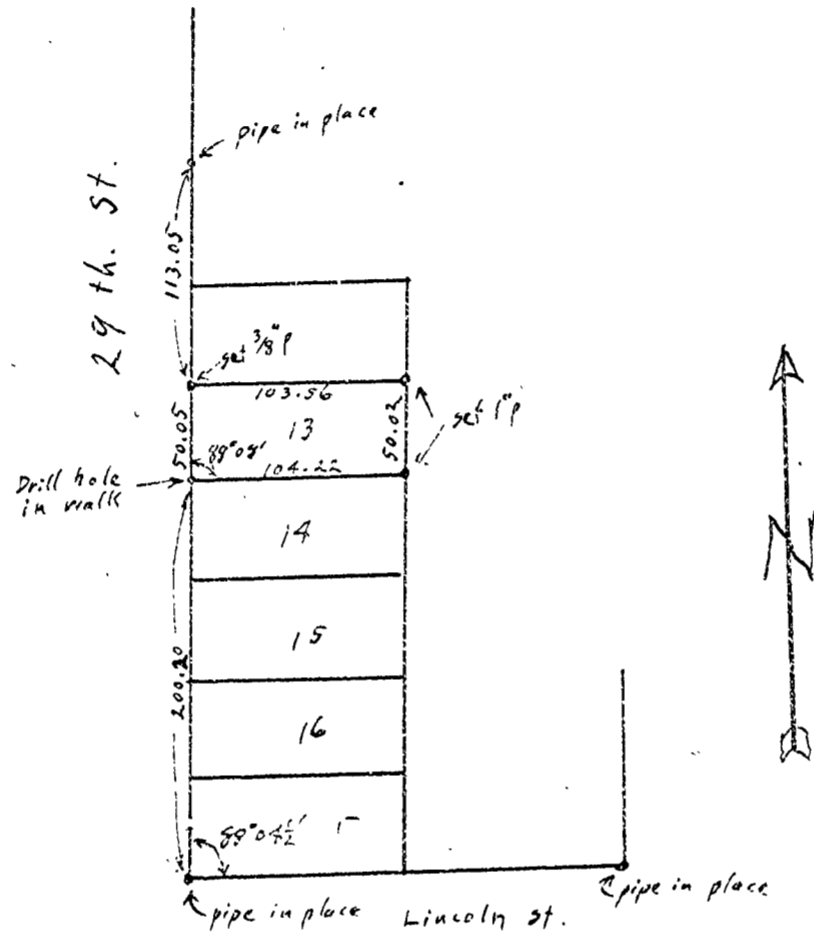


OTTO H. MEYER  
CIVIL ENGINEER  
621 North 35th Street  
CORVALLIS, OREGON

Nov. 12, 1947

1965



Blk 8, Johnson's Add.

1" = 100'

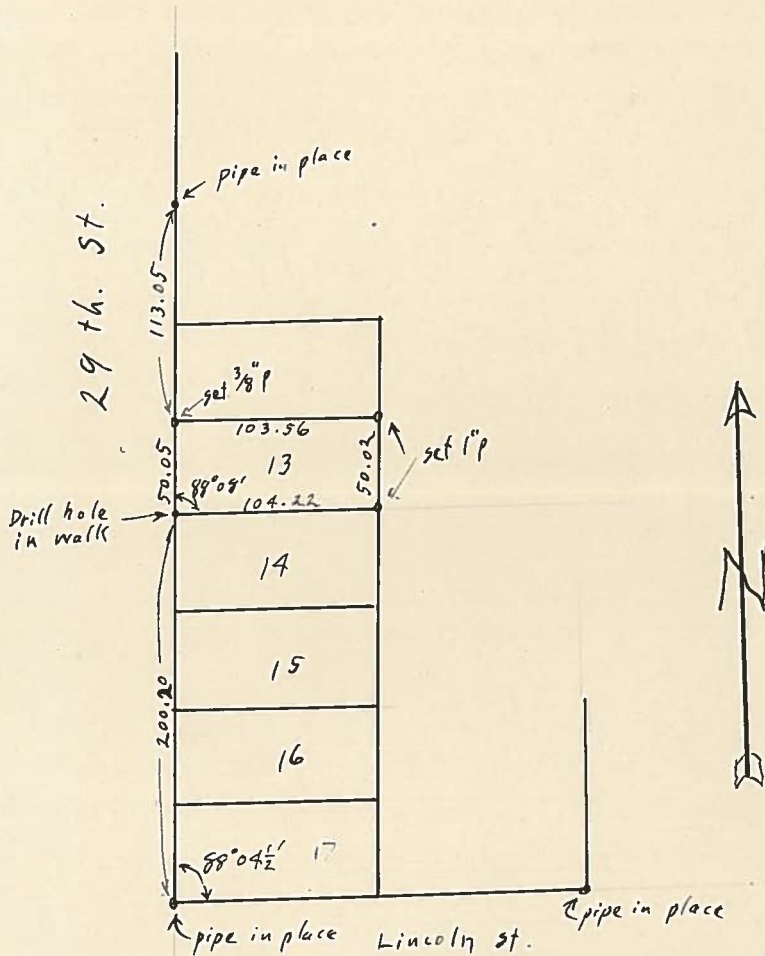
11/5-27



OTTO H. MEYER  
 CIVIL ENGINEER  
 621 North 35th Street  
 CORVALLIS, OREGON

Nov. 12, 1947

1965



Blk 8, Johnson's Add.  
 1" = 100'

11/5-27



*Plotted 27 Dec 1947*  
*me?*  
*Johnson's Addition*