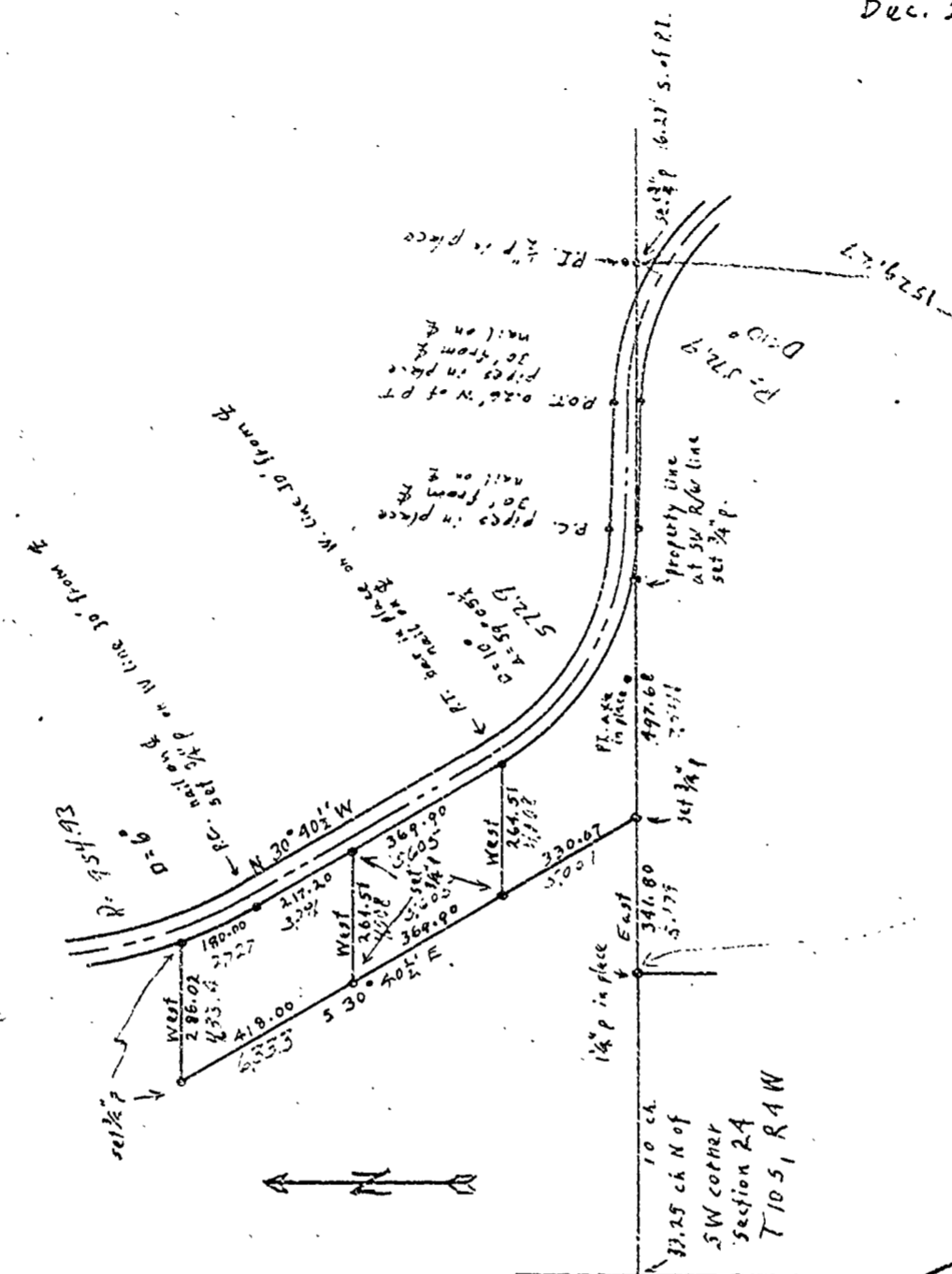


OTTO H. MEYER  
 CIVIL ENGINEER  
 621 North 35th Street  
 CORVALLIS, OREGON

1980

Dec. 27, 1947



In Sec. 24, T10S, R1W  
 1" = 400'

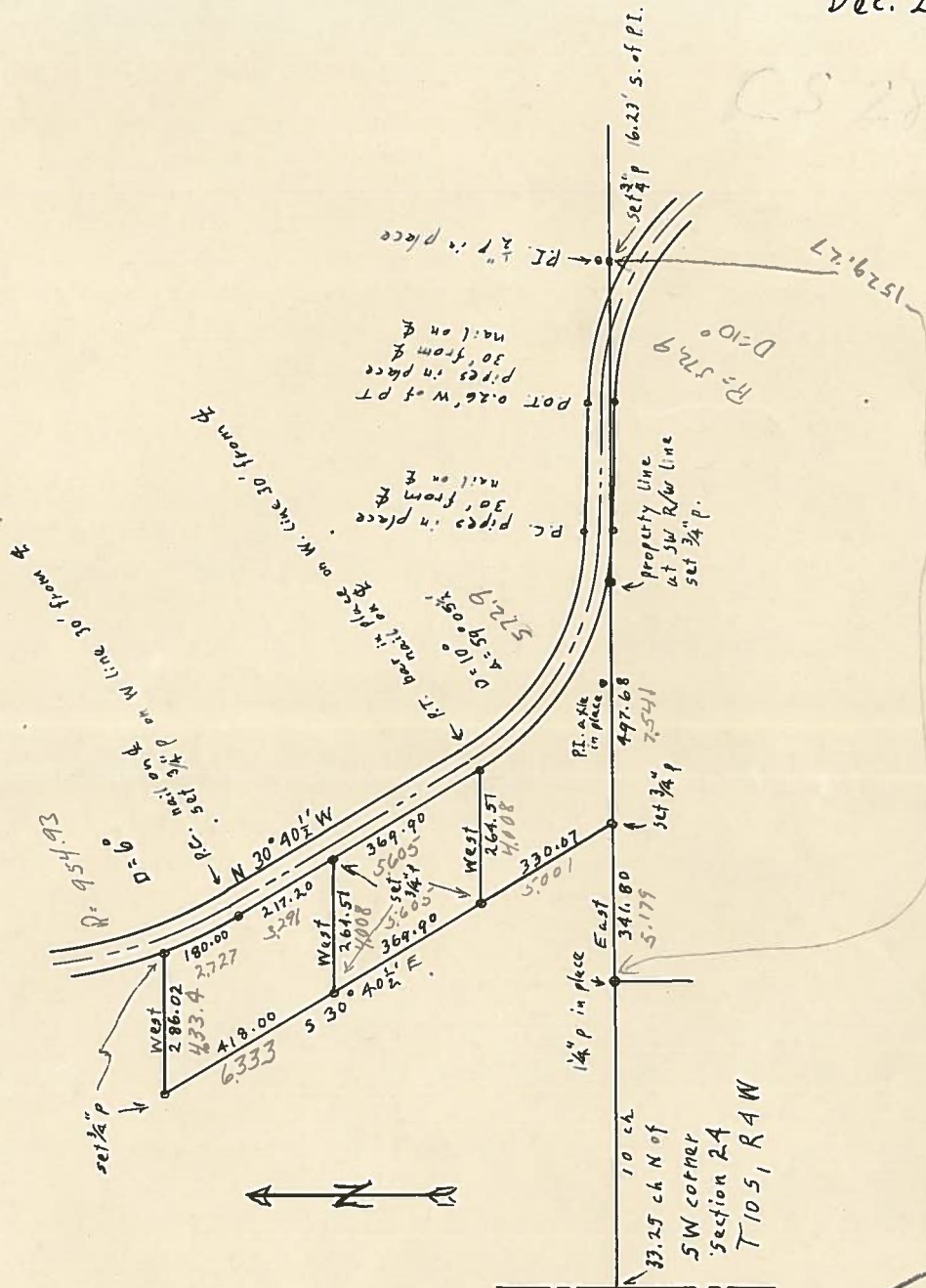


OTTO H. MEYER  
CIVIL ENGINEER  
621 North 35th Street  
CORVALLIS, OREGON

1980

Dec. 27, 1947

CS 283



In Sec. 24, T10S, R4W

1" = 400'

