

2080

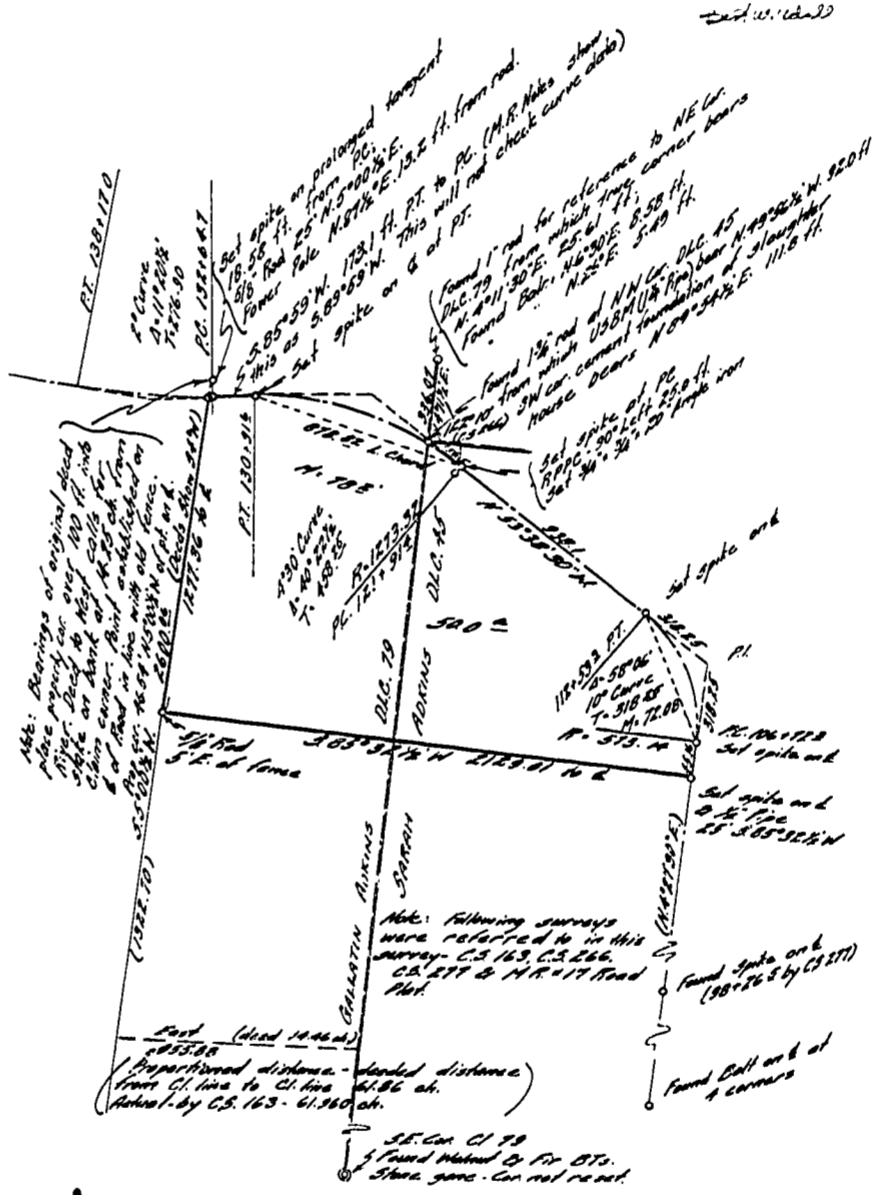
BOB FERGUSON
SEC. 30, T.10 S., R.3 W., W.M.
BENTON COUNTY, ORE.

SCALE: 1" = 400'

FEB. 1949

BERT W. UDELL
REG. ENGR.

City Survey # 23



2080

BOB FERGUSON
 SEC. 30, T.10 S., R.3 W., W.M.
 BENTON COUNTY, ORE.

2080

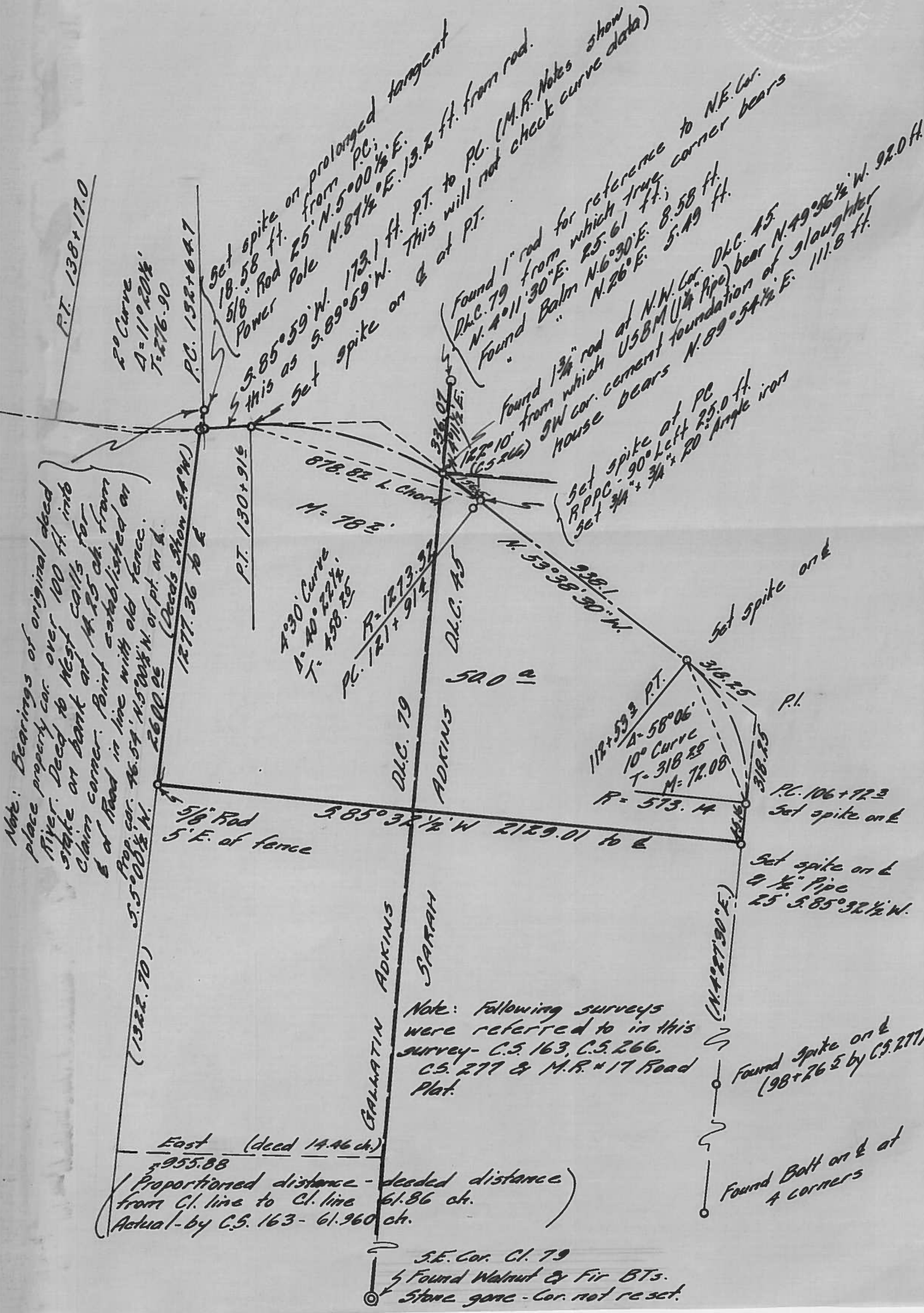
SCALE: 1" = 400'

FEB. 1949

BERT W. UDELL
 REG. ENGR.

County Survey # 2080

Bert W. Udell



Note: Bearings of original dead
 place property cor. over 100 ft. into
 river. Deed to West calls for
 stake on bank at N. 25 ch. from
 claim corner. Point established on
 E of road in line with old fence.
 Prop. cor. 46.54' N. 59° 38' W. of pt. on d.
 2600.05 (Deeds Show 244' W.)
 1577.36 to E

5/8" Rod
 5' E. of fence
 (1922.70) S. 5° 00' 1/2" W.
 East (dead 14.46 ch.)
 955.88
 Proportioned distance - deeded distance)
 from Cl. line to Cl. line 61.86 ch.
 Actual - by C.S. 163 - 61.960 ch.

Note: Following surveys
 were referred to in this
 survey - C.S. 163, C.S. 266,
 C.S. 277 & M.R. #17 Road
 Plat.

S.E. Cor. Cl. 79
 Found Walnut & Fir BTs.
 Stone gone - Cor. not re-set.

Found spike on E
 (98+26.5 by C.S. 277)

Found Bolt on E at
 4 corners

P.T. 138+17.0
 20 Curve
 A=110°20'W
 T=276.90
 P.C. 132+64.7
 18.58 ft.
 5/8" Rod
 Power Pole
 S. 85° 59' W. 173.1 ft. P.T. to P.C. (M.R. Notes show
 this as S. 89° 59' W. 13.2 ft. from road.
 Set spike on E at PT.
 Found 1" rod for reference to N.E. Cor.
 D.C. 79 from which true corner bears
 N. 4° 11' 30" E. 25.61 ft.;
 Found Bolt on E at PT. (M.R. Notes show
 curve data)
 Found 1 3/4" rod from which true corner bears
 N. 16° 30' E. 8.58 ft.
 N. 26° E. 5.49 ft.
 Found 1 3/4" rod at N.W. Cor. D.C. 45
 from which USBM (1/4" Pipe) bear N. 49° 36' W. 92.0 ft.
 SW cor. cement foundation of slaughter
 house bears N. 89° 54' E. 111.8 ft.

878.82 L. Chord
 M=78.3
 7° 30' Curve
 A=40° 22' W.
 T=198.25
 P.C. 121+91.2
 R=1273.92
 D.C. 45
 520 a

112+59.2 P.T.
 A=58° 06'
 10° Curve
 T=318.85
 M=72.08
 R=573.14
 P.I.
 318.25
 P.C. 106+72.3
 Set spike on E

Set spike on E
 2 1/2" Pipe
 25' S. 85° 32 1/2' W.

(N. 4° 27' 30" E.)