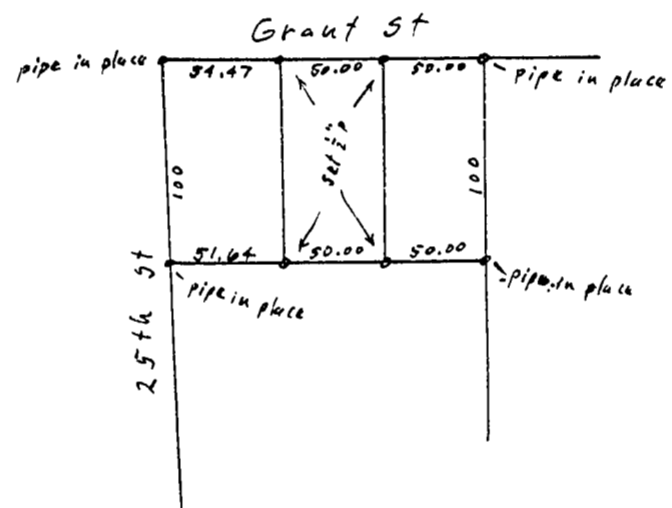


OTTO H. MEYER
CIVIL ENGINEER
621 North 35th Street
CORVALLIS, OREGON

2113

Apr. 30, 1979



Redivision of Lots 9 & 10, Blk 15
Johnson's Add.

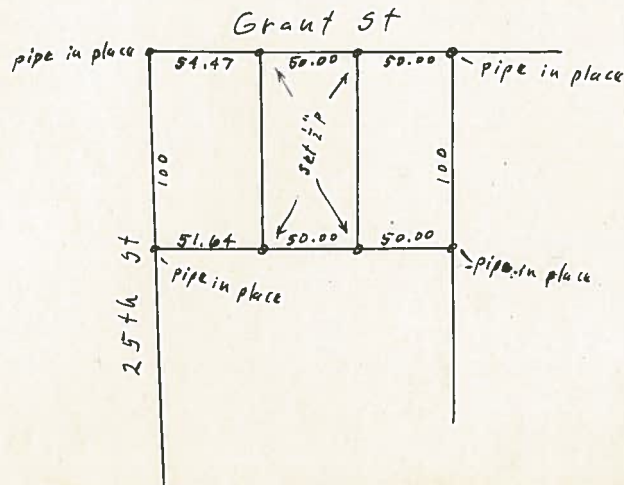
1" = 100'



OTTO H. MEYER
CIVIL ENGINEER
621 North 85th Street
CORVALLIS, OREGON

2113

Apr. 30, 1949



Redivision of Lots 9 & 10, Blk 15
Johnson's Add.

1" = 100'

