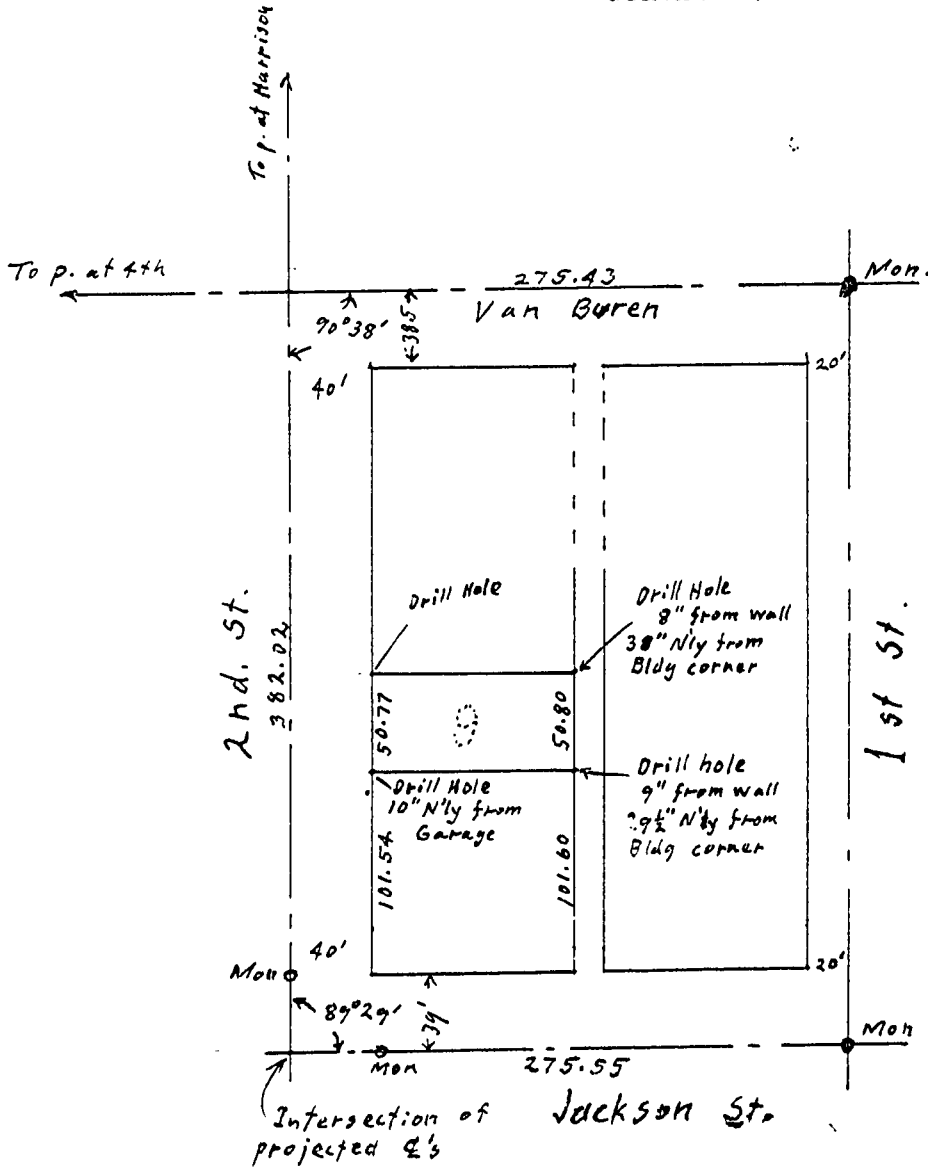


OTTO H. MEYER
CIVIL ENGINEER
621 North 35th Street
CORVALLIS, OREGON

Nov. 11, 1949



Blk 1, Dixon's Addition

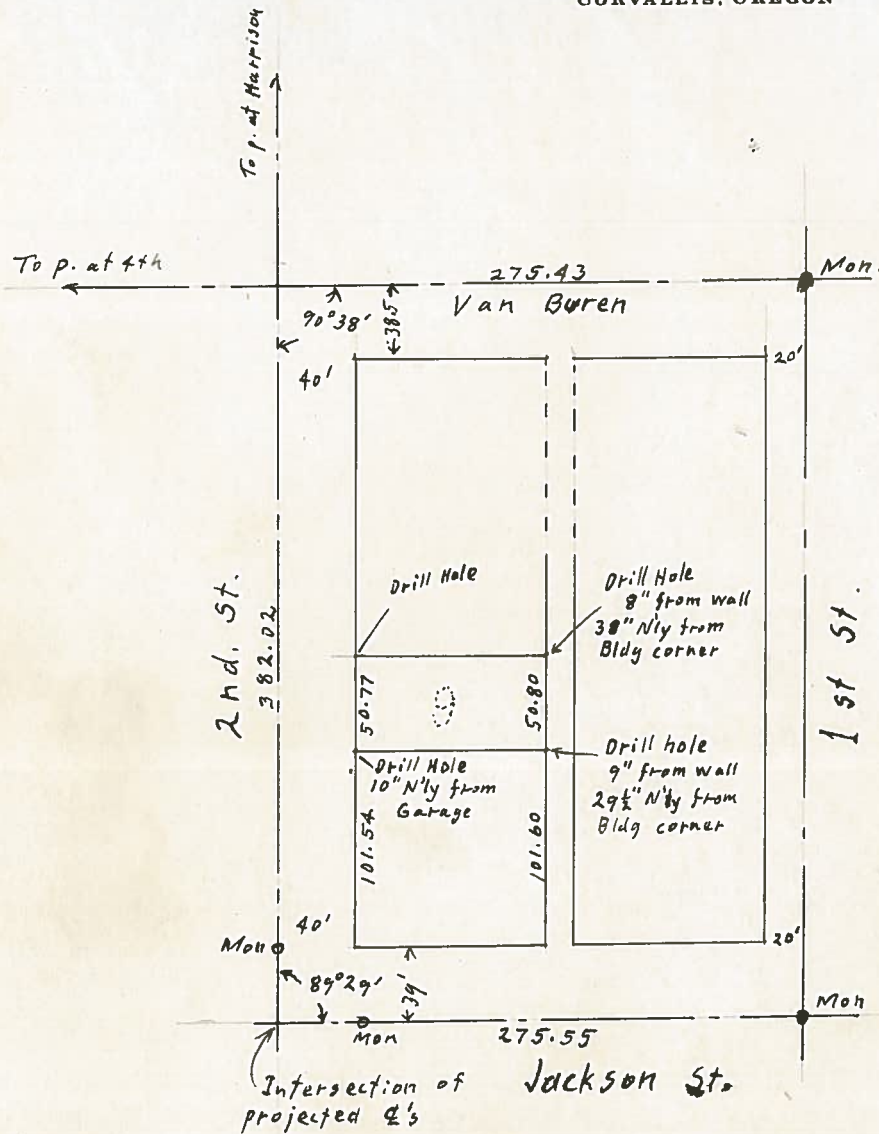
1" = 100'

T. 11 S. R. 5 W. SECTION 35



OTTO H. MEYER
CIVIL ENGINEER
621 North 35th Street
CORVALLIS, OREGON

Nov. 11, 1949



Blk 1, Dixon's Addition

1" = 100'

T. 11 S. R. 5 W. SECTION 35

