

C.S. # 2164

Hardcopy 14-6 #19

also see notes in file

See 33-14-6

C.S. 307

John Wright
Albin

For Emmitt Gordon

2164

00065

LINE DATE PARTY

PROJECT

KILHAM FORM P-172

180055

1/4" Pipe
40 Cot.

1.961 -14°50' 1.896

4

2.258 -6°00' 2.246

3

7.963 -1°31' 7.958

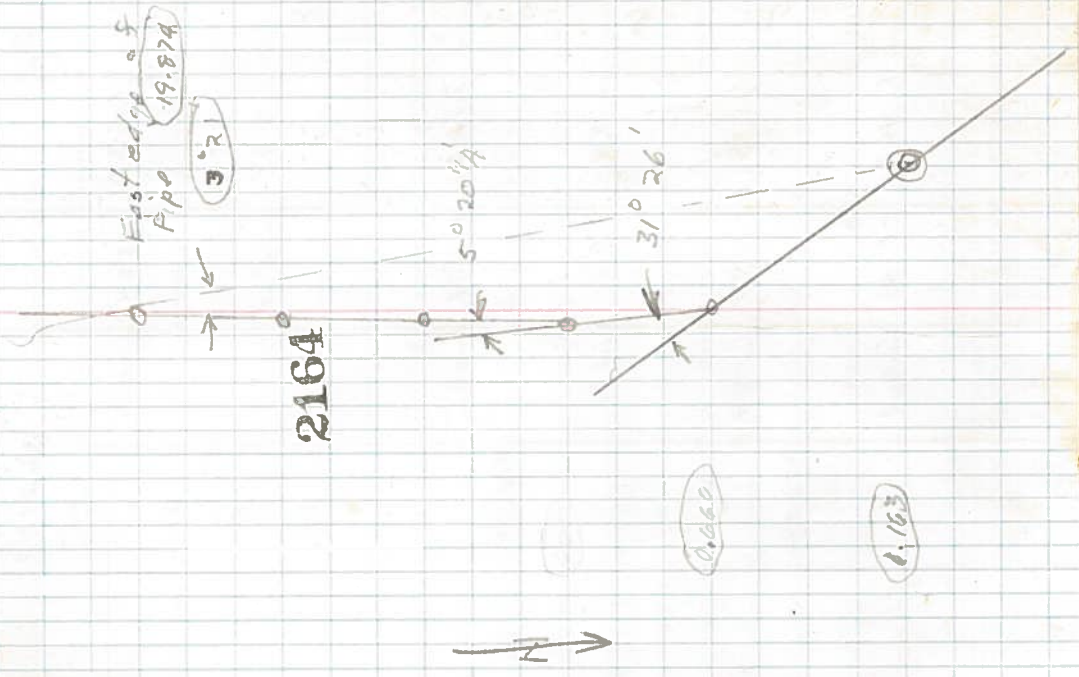
2

7.103 +2°20' 7.097

Transit
Setup

0.996 -32°21' 0.841

West
1/4 Cot
3/8" Pipe
Inside Abutment Angle



LINE DATE PARTY

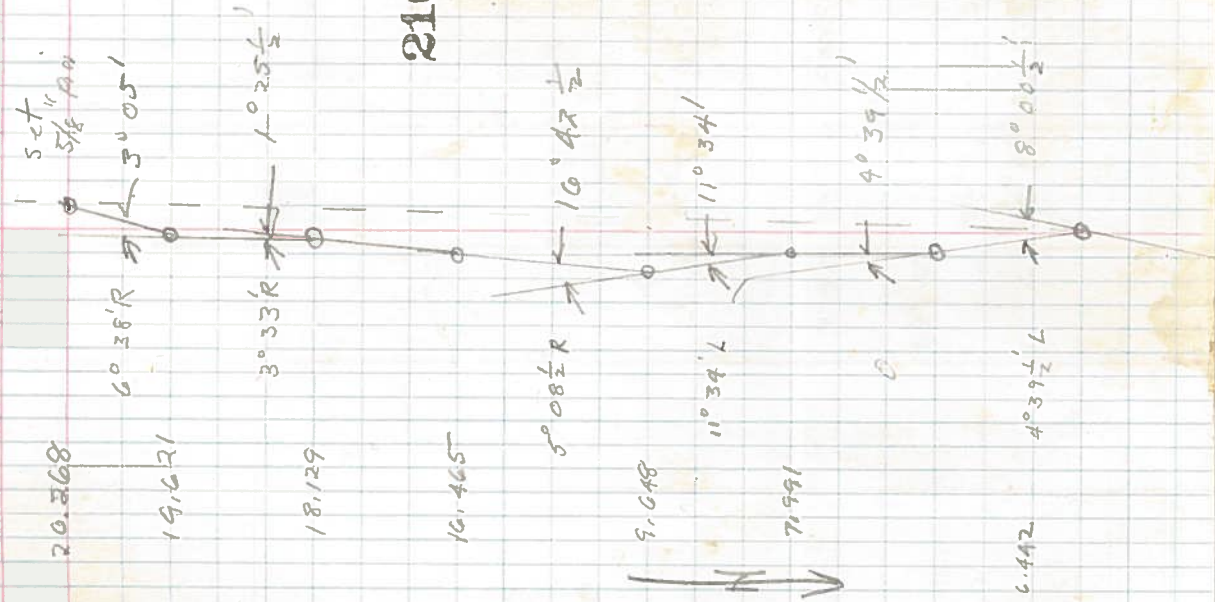
PROJECT

KILHAM FORM P-172

180055

SEC. Cont.	33 + 32 RMC	4 25 1.102 R		
10	0.700	+31°29'	0.651	0.025 R
9	1.630	+23°27'	1.1495	0.072 L
8	1.843	+24°20'	1.1671	0.222 L
7	2.160	+17°04'	6.845	0.864 L
6	1.794	-19°30'	1.691	0.525 L
5	1.578	-11°02'	1.549	0.525 L
1/2" Pipe	6.464	-0°43'	6.463	

80
1302
1552
260
1182



LINE DATE PARTY

PROJECT

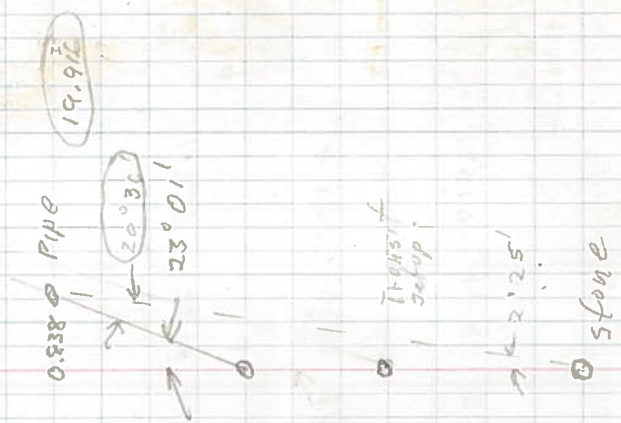
KILHAM FORM P-172

180055

460
28.1
381.9

159 24

2164



19.974

2.162 +7° 37' 2.143

12

8.000 +10° 49' 7.858

11.

10.094

2.214 -8° 48'

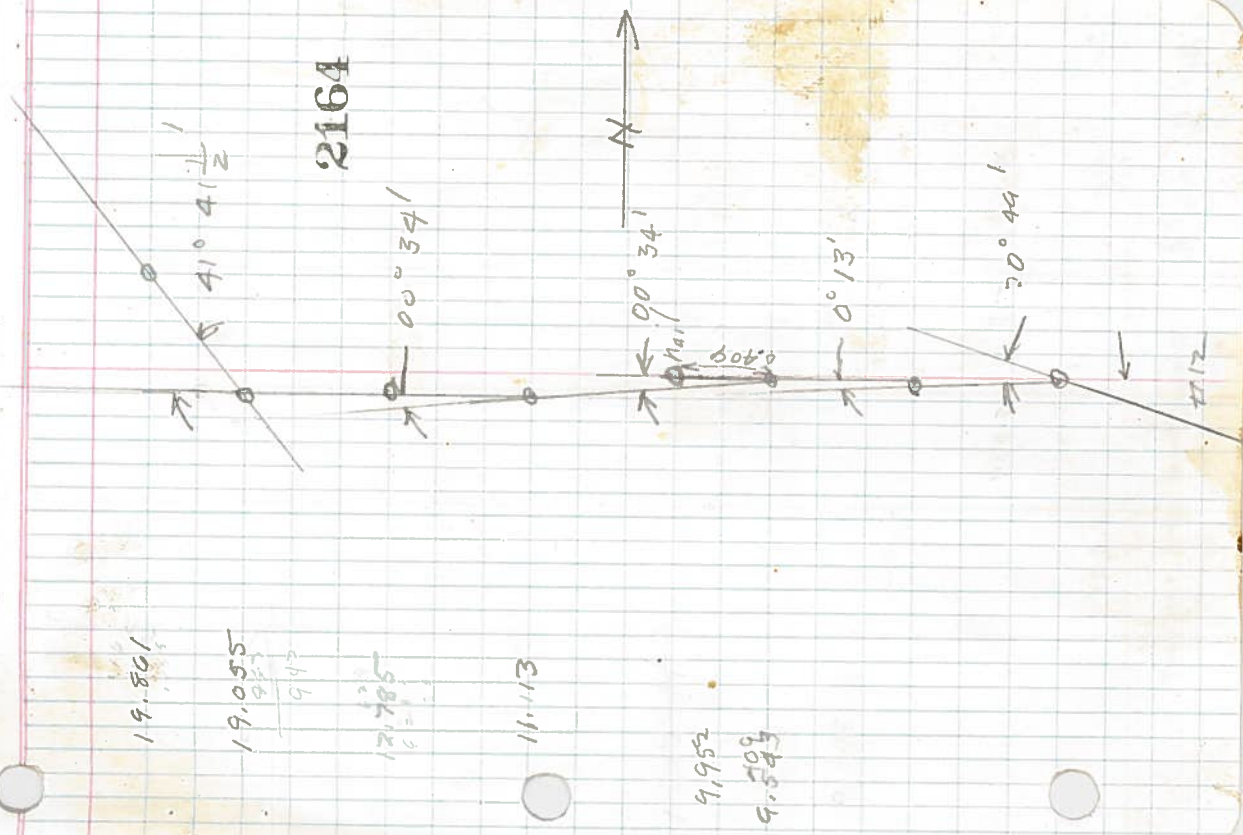
8.000 -8° 48' 7.900

1/4 Cor
33
4

2450
7412
1507

2164

N



19.801

19.055

947

12.785

11.113

9.952

9.543

PARTY

DATE

PROJECT

18095

KILHAM FORM P-172

0.609R

0.029L

0.029L

0.029L

0.014L

0.014L

10

17

16

15

14

13

1" Pipe
40 Cornet

1.146 -19°43' 1.07A

6.223 +1°40' 6.270

1.724 +14°08' 1.672

1.707 +23°04' 1.570

5.805 +6°30' 5.768

3.819 +8°45' 3.775

LINE DATE..... PARTY.....

PROJECT.....

KILHAM FORM P-172

180055

17

0.890 + 8'32" 0.888

Sec Corner 32x33
5x4

0.025R

Set 5/8" Steel Pin
Fir
Original trees now stumps.
Latter x stump in gone.

0.5d
0.25

7/1

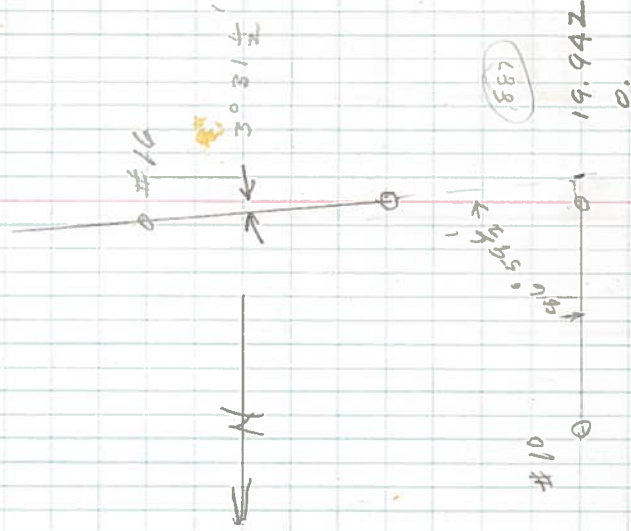
0612933
19933

19.878

19.988
30.848
1.6

19966

2164



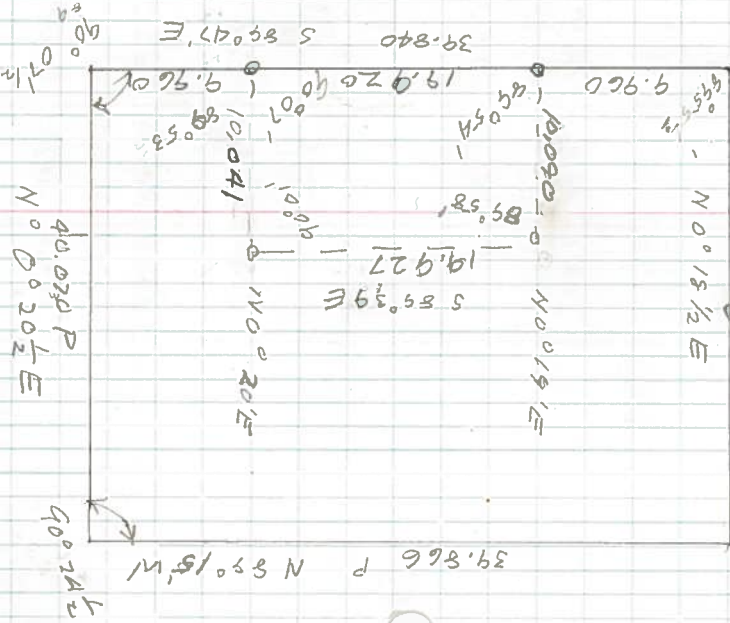
19.942
0.

2164

N 0° 15' 1/2 E



39.866



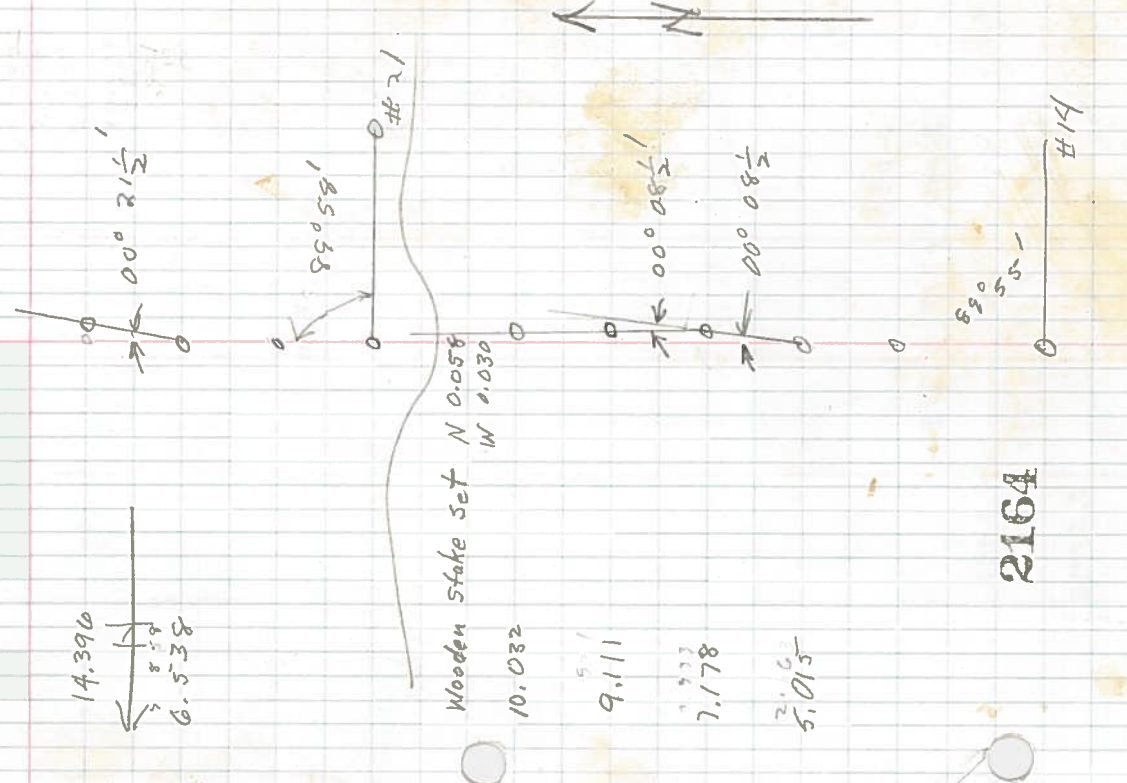
$$\begin{array}{r} 35700 \\ 16831 \\ \hline 185.00 \end{array}$$

LINE DATE PARTY

PROJECT KILHAM FORM P-172 180055

25	7.950	-8°43'	7.858	0.049R
24	4.738	-00°24'	4.738	
23	1.843	+3°53'	1.800	
22	0.921	-		
21	2.057	-20°00'	1.933	0.005R.
20	2.262	-17°00'	2.163	
19	1.451	-11°29'	1.424	
18	3.008	-5°30'	3.591	
	Nail between 14 + 15			

30010
 3262
 330
 369.2
 730
 3608
 5035
 1262
 330
 549.9
 7.258
 0.181
 0.142
 5.03



5 843
PARTY

5 000
19 873
19 873
1 054

LINE DATE

PROJECT

KILHAM FORM P-172

180055

800	14.923	5.80
0.531	12.228	3.95
21.469	2.153	3.345
	19.923	
	14.396	
	12.228	
	5.531	
	21.993	

2164



27

27

26

25

0.054	2.139	0.049R
2.157	-7°18'	2.139
3.349	-4°33'	3.338
		0.049R
		0.049R

