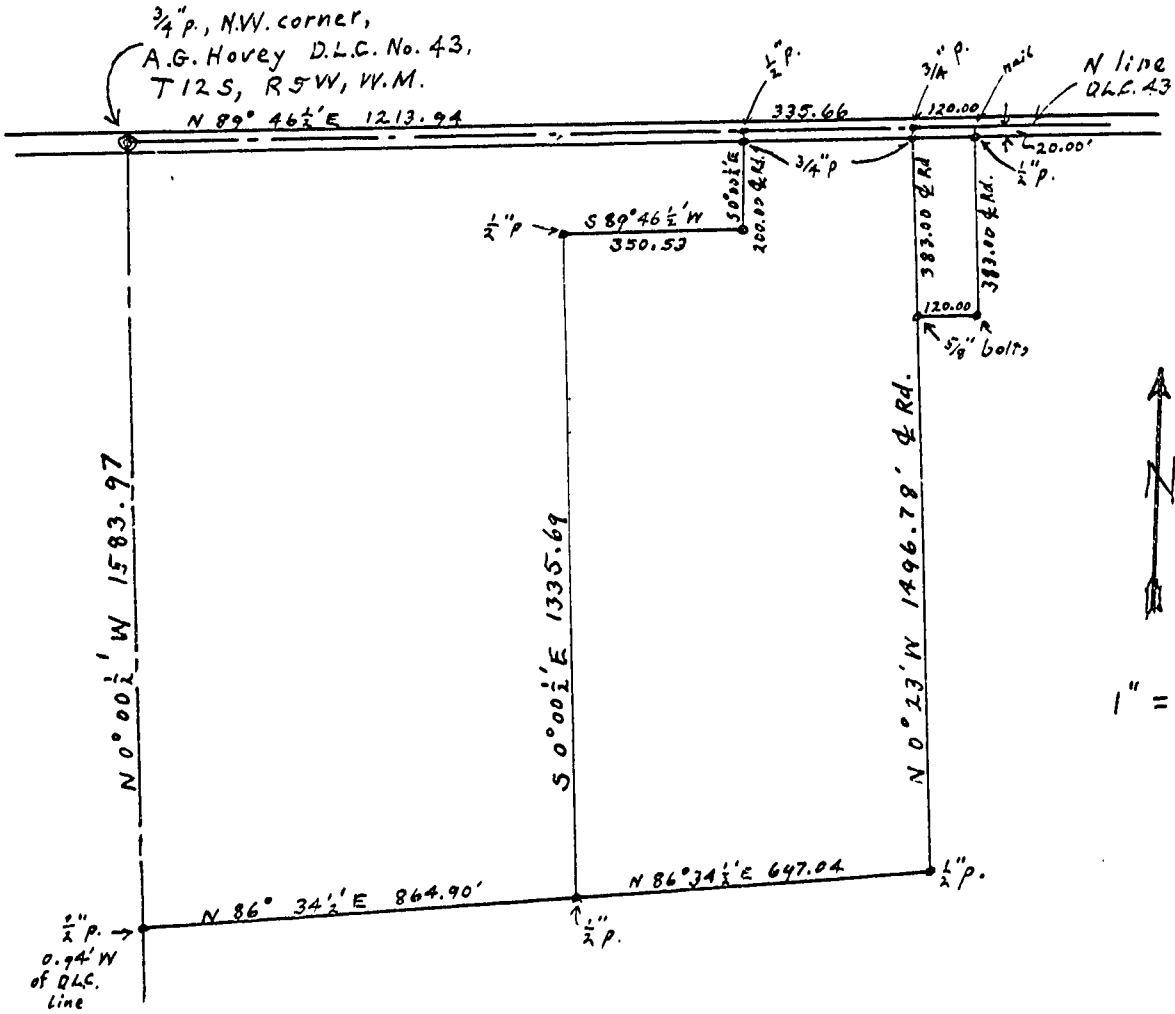


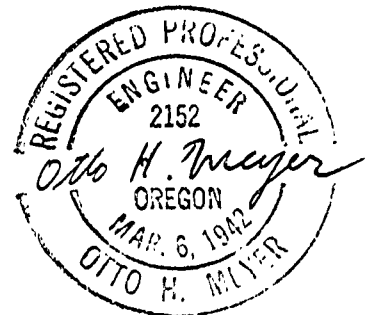
OTTO H. MEYER  
 CIVIL ENGINEER  
 621 North 35th Street  
 CORVALLIS, OREGON

2170

Mar. 2, 1950



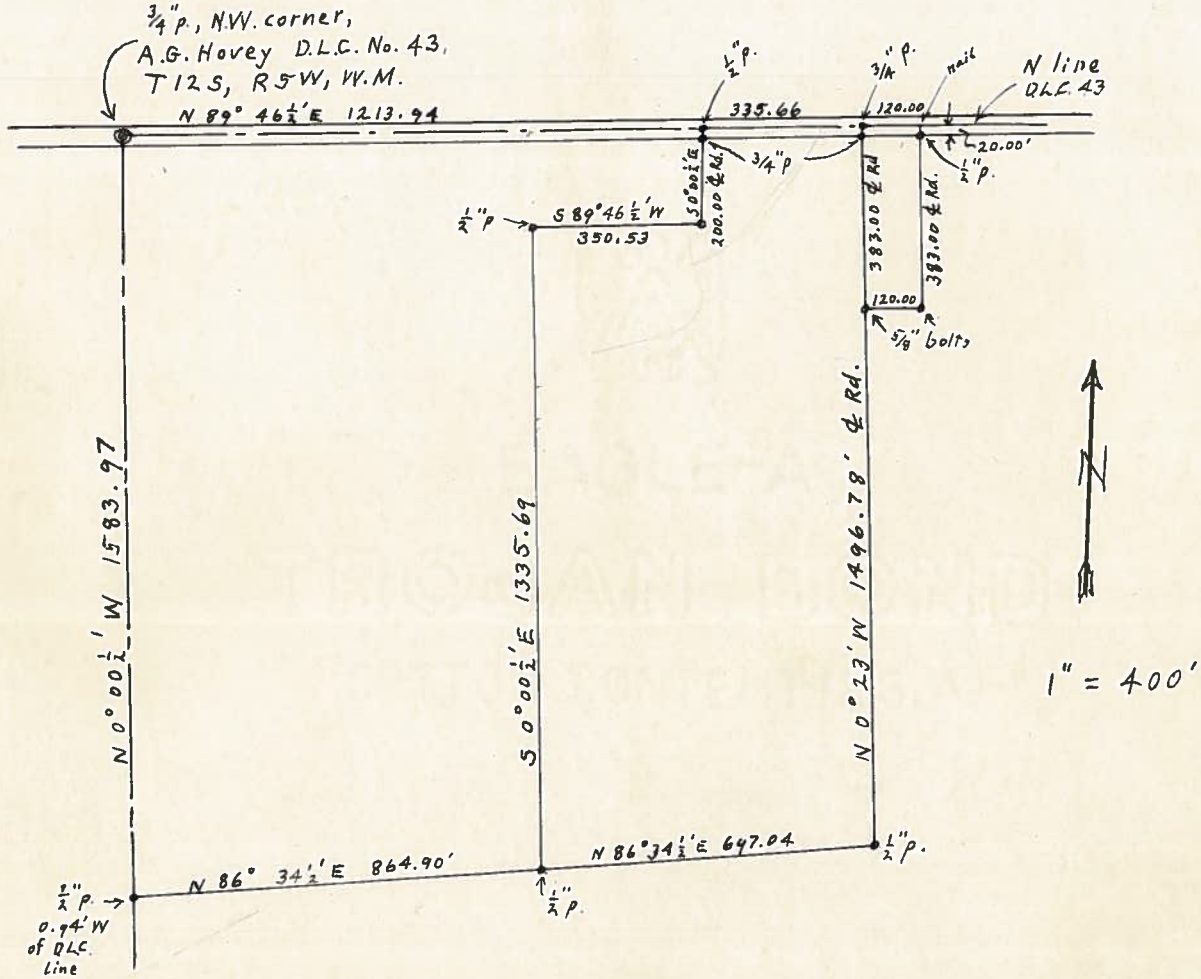
Revised data on tracts in N.W. part  
 of A.G. Hovey D.L.C. No. 43, T 12 S, R 5 W, to  
 correct errors deriving from 1911 error  
 in North line of D.L.C.



OTTO H. MEYER  
 CIVIL ENGINEER  
 821 North 85th Street  
 CORVALLIS, OREGON

2176

Mar. 2, 1950



Revised data on tracts in N.W. part  
 of A.G. Hovey D.L.C. No. 43, T12S, R5W,  
 to correct errors deriving from 1911 error  
 in North line of D.L.C.

