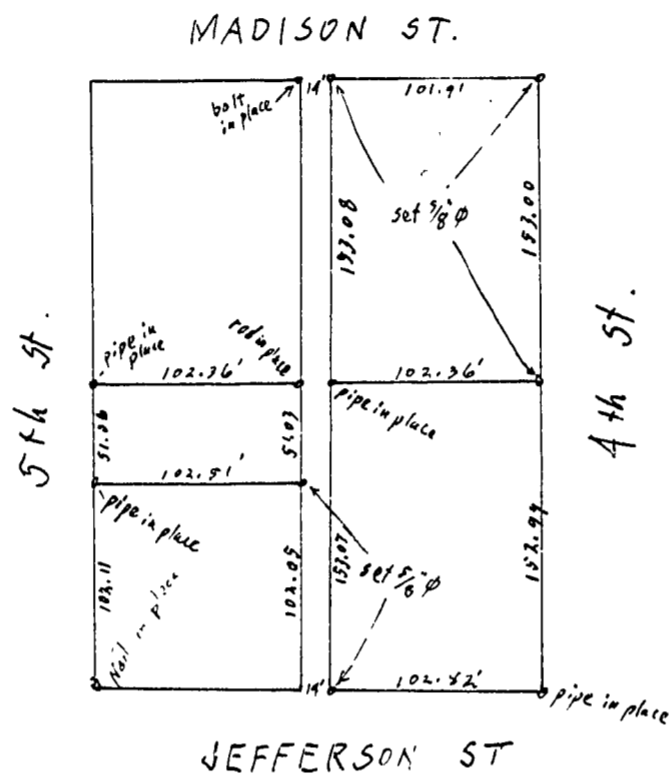


OTTO H. MEYER  
CIVIL ENGINEER  
621 North 35th Street  
CORVALLIS, OREGON

2185

Apr. 2, 1950



1" = 100'

Block 22  
ORIGINAL TOWN OF MARYSVILLE

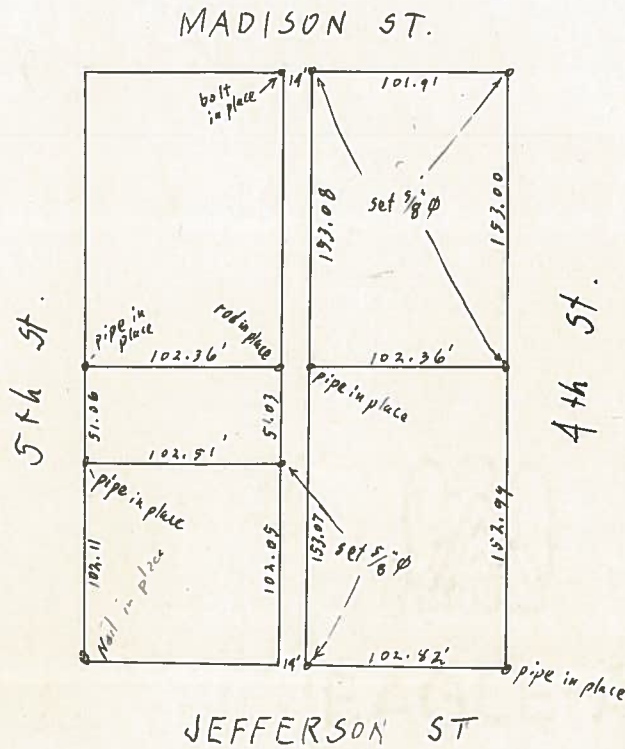
T. 11 S. R. 5 W. SECTION 35



OTTO H. MEYER  
CIVIL ENGINEER  
621 North 35th Street  
CORVALLIS, OREGON

2185

Apr. 2, 1950



Block 22  
ORIGINAL TOWN OF MARYSVILLE

T.11S. R.5W. SECTION 35

