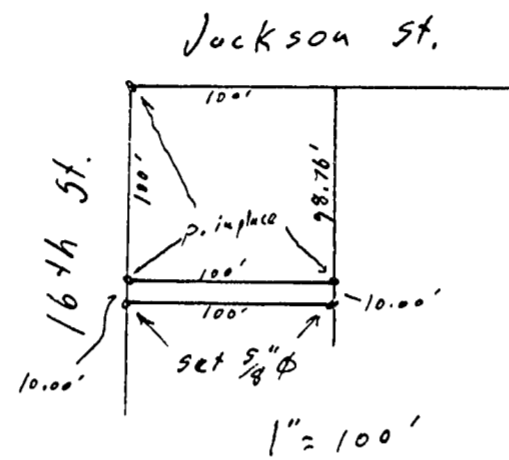


OTTO H. MEYER
CIVIL ENGINEER
621 North 35th Street
CORVALLIS, OREGON

2199

June 4, 1950



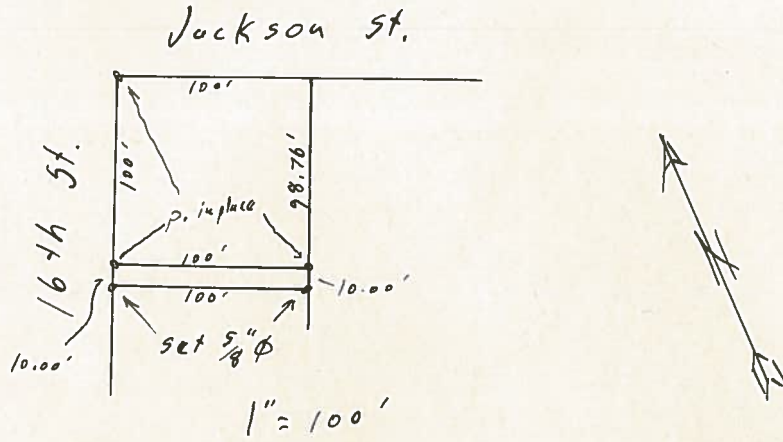
Survey on 16th St.
Corvallis, Ore.



OTTO H. MEYER
CIVIL ENGINEER
621 North 35th Street
CORVALLIS, OREGON

2199

June 4, 1950



Survey on 16th St.
Corvallis, Ore.

