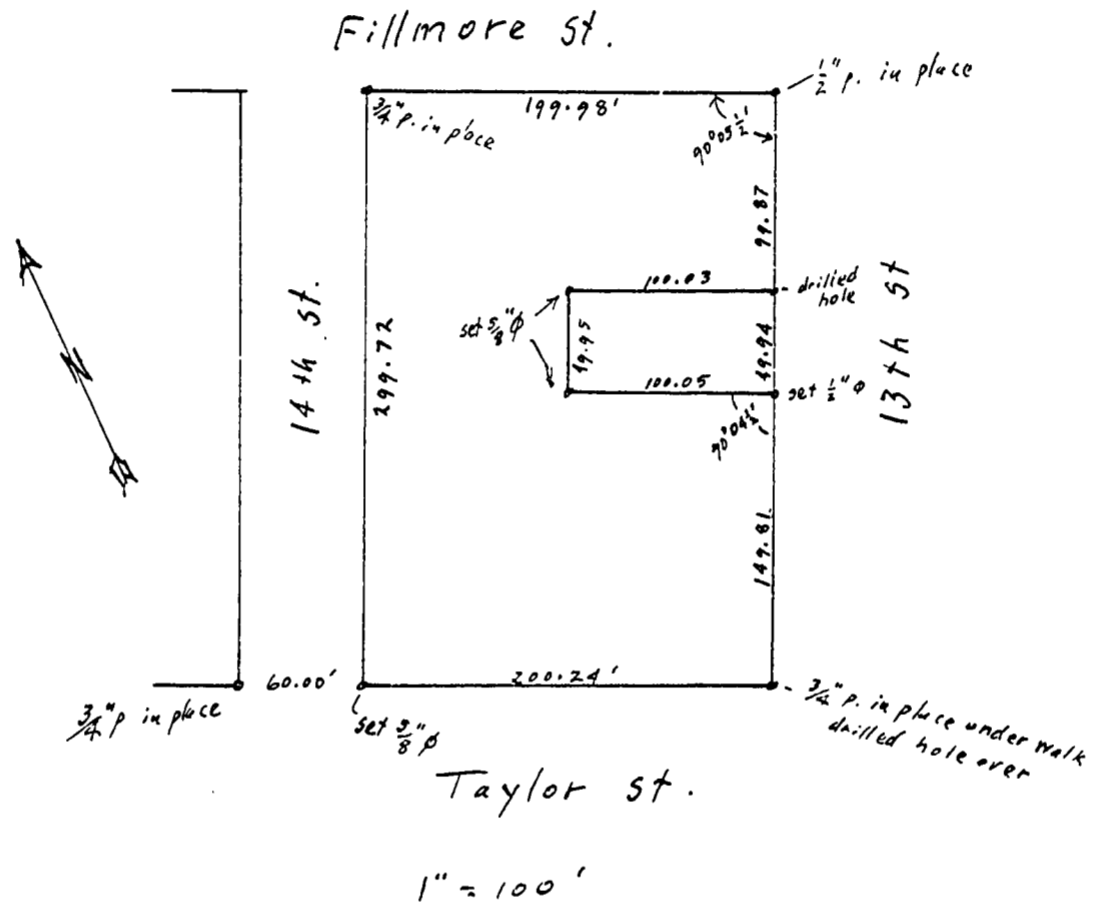


2202

OTTO H. MEYER
CIVIL ENGINEER
621 North 35th Street
CORVALLIS, OREGON

June 18, 1950

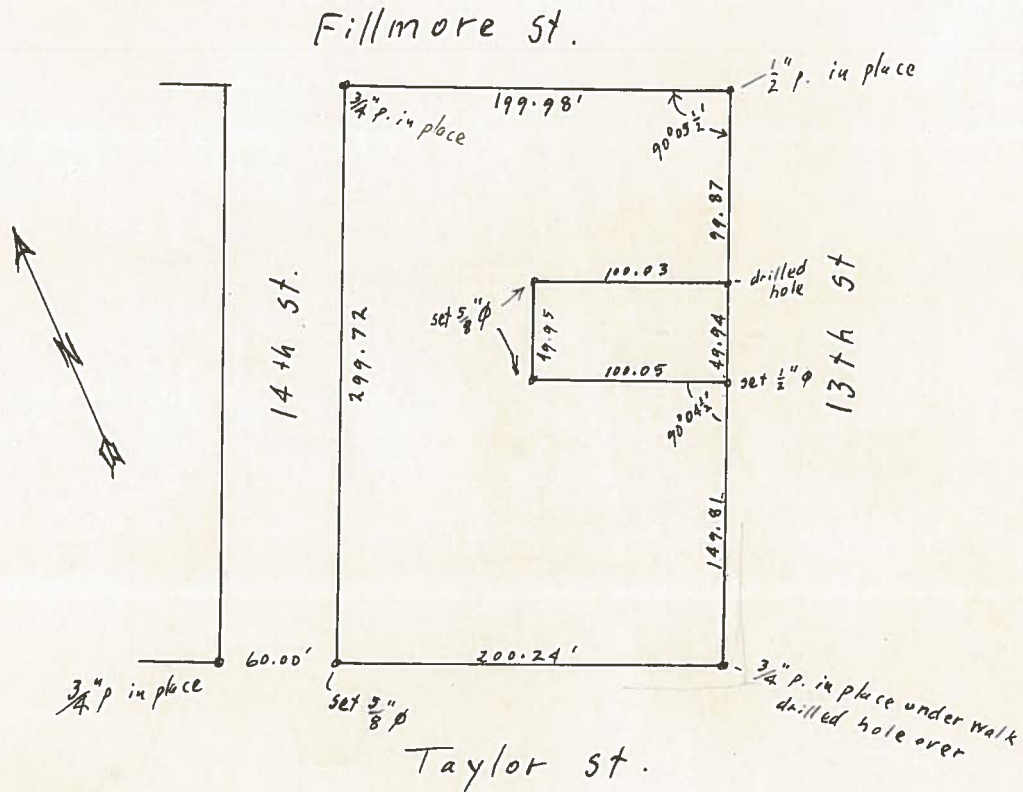


Lot 4, Block 13, Job's Addition



OTTO H. MEYER
CIVIL ENGINEER
821 North 85th Street
CORVALLIS, OREGON

June 18, 1950



1" = 100'

Lot 4, Block 13, Job's Addition

