

C.S. # 2225

see notes in file

F.B.







LINE DATE..... PARTY.....

PROJECT.....

KILHAM FORM P-172

180055

1/4 Iron Rod 1/4 Corner 3/11 0.330RT

0.334

10

7.963

9

5.067

8.000

8

Setup on #7 and Running West

8000	7.970	8.000
3.970		5.780
4.030	5.35	2.020
76	1.16	
28		
56		

7.970	8.000
5.35	5.780
1.16	2.020
1.16	

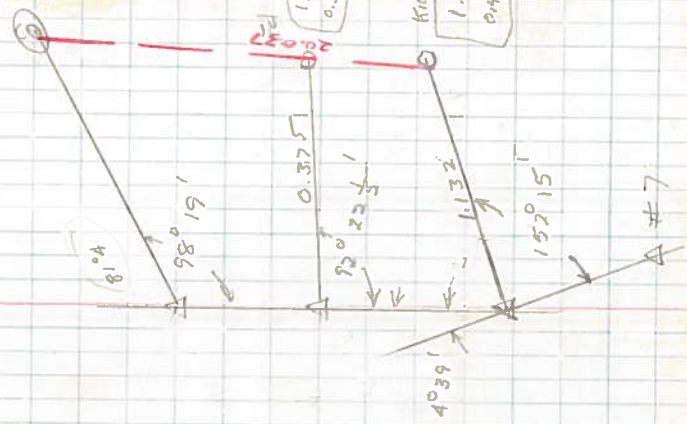
26" 26"

N  
↑

21.078

21.030

13.067



3

LINE DATE ..... PARTY .....

PROJECT .....

KILHAM FORM P-172

100055

3/4" Iron Pipe

0.035 AT

3.653

7.985

7.991

9

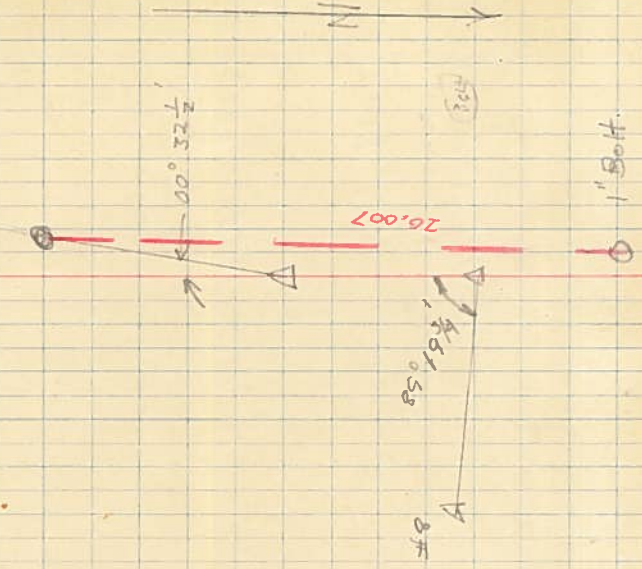
(4)

7,893  
A 340  
3,653

1° 5'  
30 2

44 1/2  
20 1/4

178 85 1/2  
89 15 1/2  
N 78° 45'





LINE DATE

PARTY

PROJECT

SHANNON STOUT

3

4,098

13

2,934

8,000

3/4" x 3/4"

Iron Rod

12

4,948

-80°28'

4,588

7,098

7,098

3/4" Iron Pipe

0.8324

0.32287 0.22604

0.065 RT

0.028 ft.

180  
174 60  
166 12  
73 48  
99 40

178 59  
99 29  
111 36  
106 12

7 99  
0 66  
773 4  
218 25  
106 12  
218 18  
73 48

5

37,890

27,976

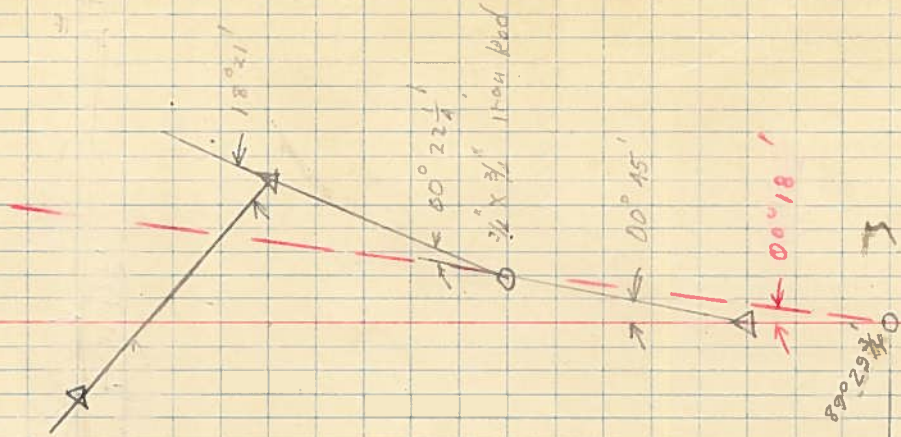
15,931

N

17,045

7,098

7,098



6

LINE DATE PARTY

PROJECT

SHANNON #1007

R.T. 16.8 + 58.9 0.173 RT 0.015 Lt

3.838

40 Center

0.170 RT

4.110

13

0.377 RT 0.226 RT

N

36.519

SW Corner of House

N 21 1/2

37.081

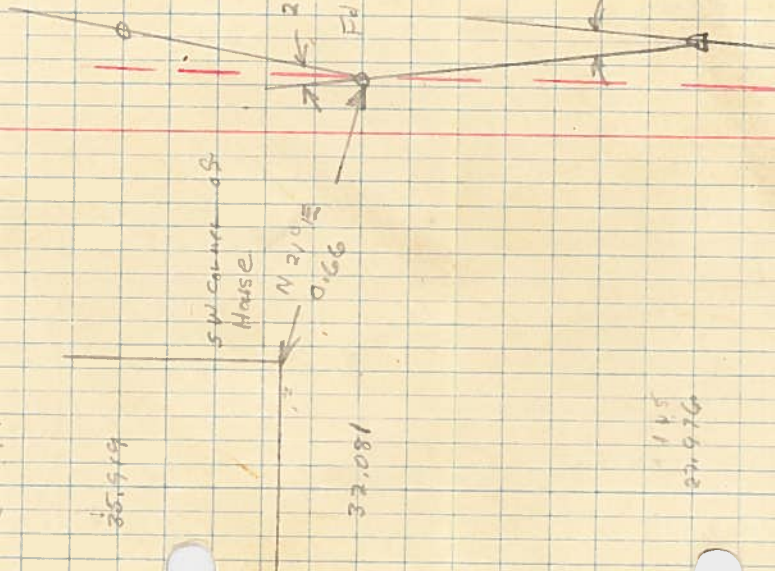
20.56

E of 3/4" Iron Rod

40001

145  
87.976

0 2 1/2 Iron Rod





LINE DATE \_\_\_\_\_ PARTY \_\_\_\_\_

PROJECT

SHANNON #1007

King Bolt. on North Line Section II.

8

1.132

1.111 RT

4.053

7.501

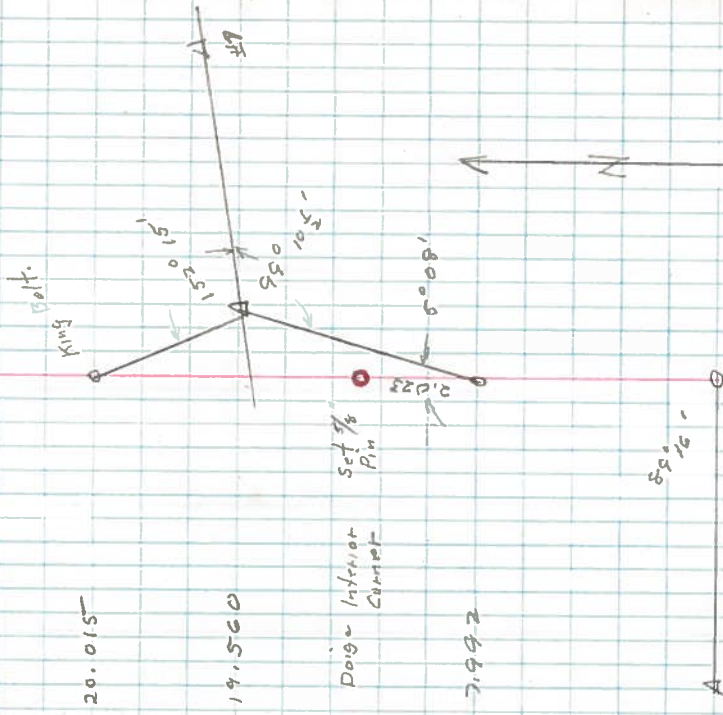
3/4 Iron Rod

7.992

3/4" Iron Rod

5

TABLE I



LINE DATE

PARTY

PROJECT

KILHAM FORM P-172

180055

8

