

C.S. # 2231

See notes in file

F.B.

CI 42-14-6

CS # 85

12-12-50

Wright

Pumpkin ch

For E.R. Price

2231

LINE DATE PARTY

PROJECT

KILHAM FORM P-172

180055

NW Cor Cl. 12 TIAS RGW
1/4 x 1" Fou

Striking P.A. N. of corner
37.40

3

401.10 +00' 22' 401.09
400.10 +00' 43' 400.07

2 Nail in Rd.

2 Nail in Rd.

317.44 +00' 35' 317.42

1 Part on A.S. East North Tail



Fd NW Cor Cl 42-14-6

939.576

A



A



4.15

Fd 1 1/2" Dip = SW Cor
SW Cor

0.10

R.R. Tracks Uety irregular

LINE DATE _____ PARTY _____

PROJECT _____

KILHAM FORM P-172

100065

Pipe	2.77 W & Rd S.	0.17' Lt
5	387.0	-1°18' 382.70
4	241.89	2.89
2	217.04	- 217.04

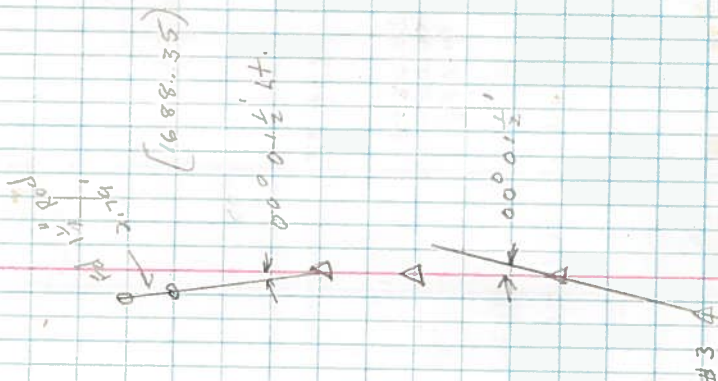


687.99
1,686.19

1,297.49

1,055.60

832.56



LINE DATE..... PARTY.....

PROJECT.....

KILHAM FORM P-172

100055

9

0.37 - 0.37

269.72 - 269.72

8 Point on S rail of R/R track
track gauge = 47.61

317.53 - 1° 01' 317.48

6 Nail on cl. line

7

304.37 - 304.37

6

153.26

2 Nail N. Rd 0.09 N to Cl. line

527.57

Set 3/4" Pin

Set 1/4" Pin

22.83
R/R track

153.55
95
00



A#1

cl. line

452.63



838.56

LINE DATE..... PARTY.....

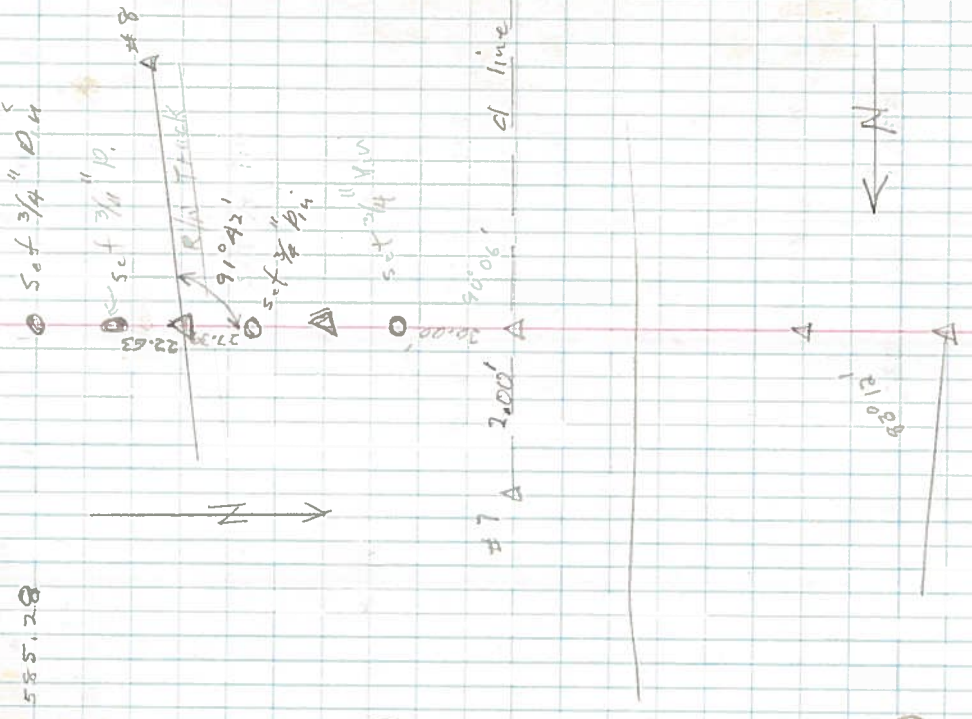
PROJECT.....

KILHAM FORM P-172

180005

13	0.20	279.27	0.20	279.27
10	132.84	-4105'	132.55	
12	173.27	-06°17'	173.26	
511				

10 Point on S R/R track
 330.72 - 330.72
 8 Point on S R/R track



562.61

1865.73

1826.79

1815.51

1386.00

1081.70

754.70

585.25

367.61

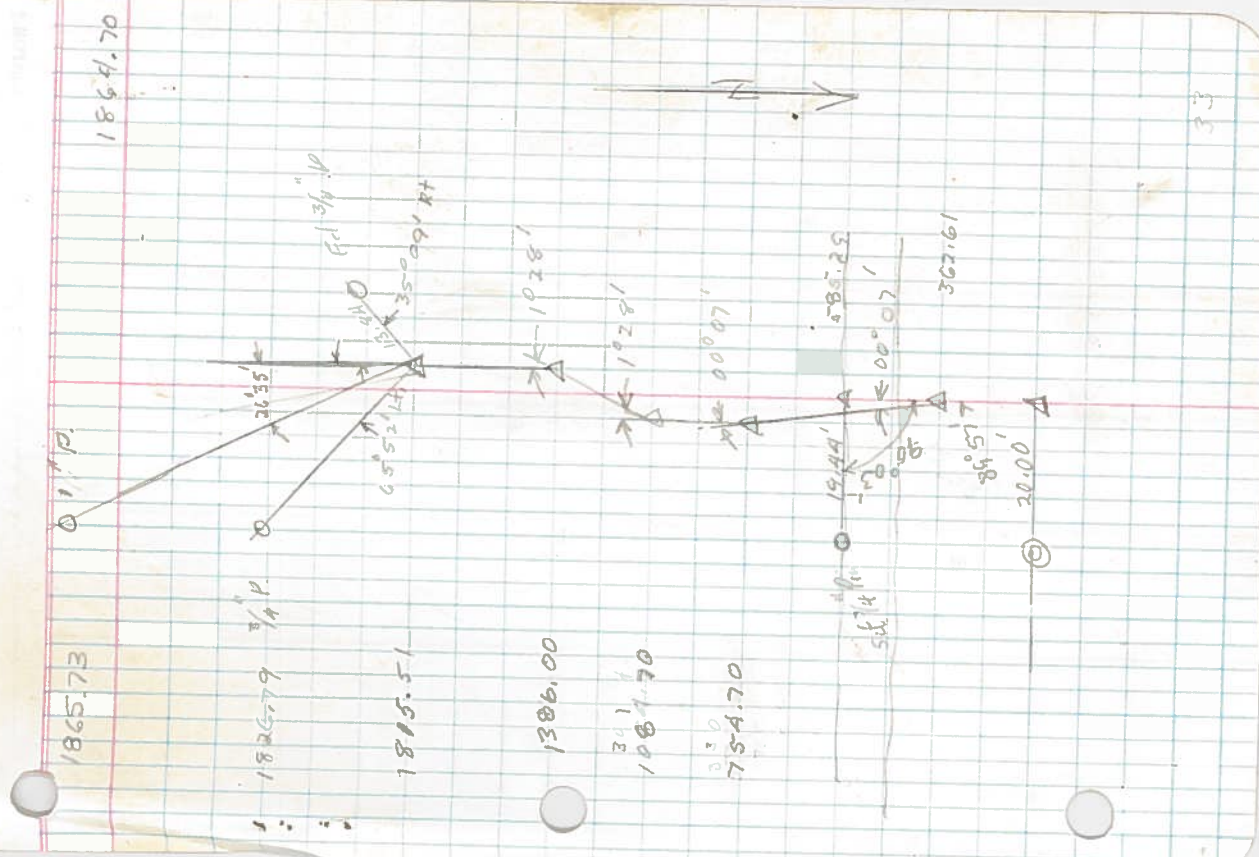
20.00

1865.73

1865.73

1865.73

1865.73



PARTY

LINE DATE

180055

18,224 ft.

18,284 ft.

6,911 ft.

0,791 ft.

56.16 - 52.16

27.60 - 27.60

40.37 - 40.37

389.14 - 389.14

301.40 - 301.40

330.00 - 330.00

389.05 - 389.05

366.09 - 2049 365.66

20.00 ft W on line from

NW Cor of 12 Class R6 W

1" Pipe

3/4" Pipe

20

19

19

17

219.64

Point on S Rail of Tracks

PROJECT

KILHAM FORM P-172