

JULIUS BIEGEL

SEC 33, T. 10S.

R 4 W., W.M.

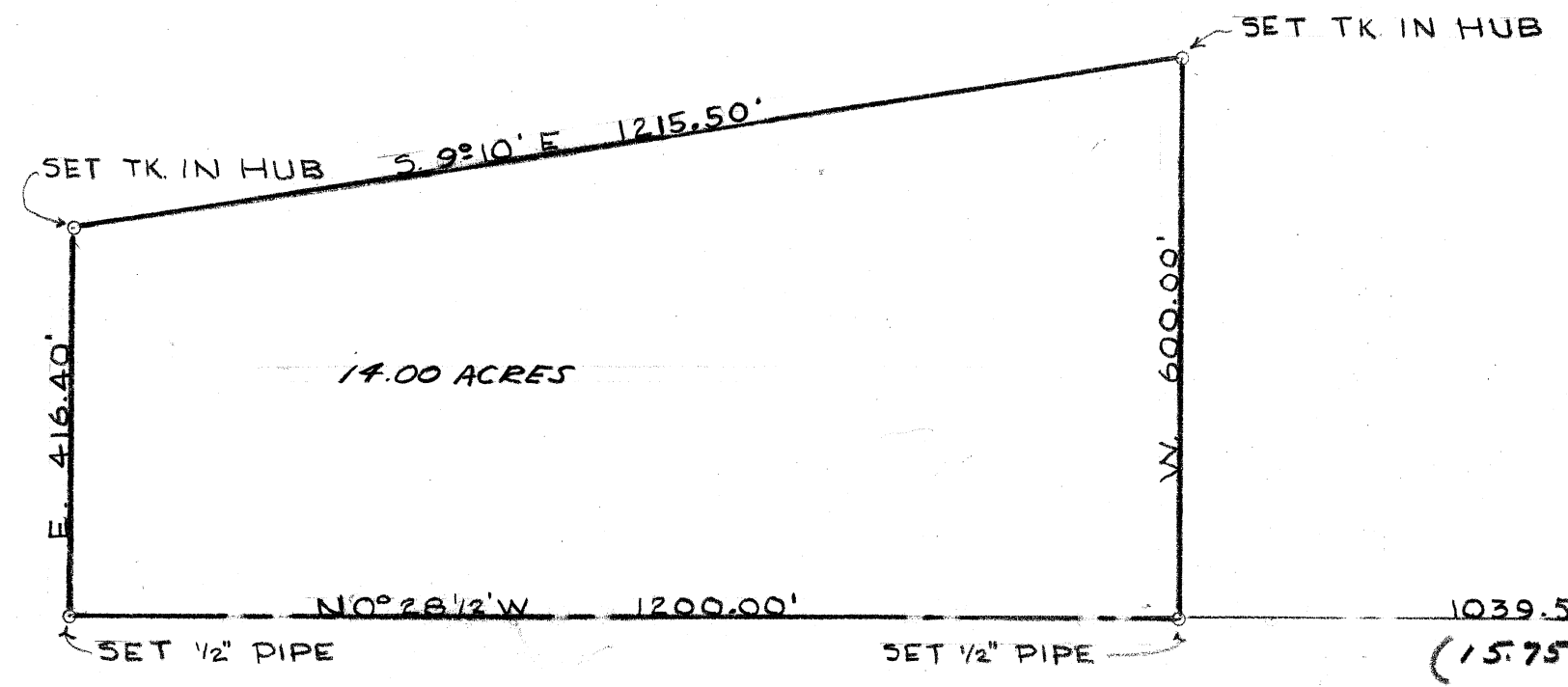
SCALE 1" = 200'

MAY 1951

2270

BEGINNING AT A POINT 15.75 Ch. SOUTH OF THE NE CORNER OF THE ANTHONY ROBERTS D.L.C. #55, AND RUNNING THENCE WEST 600.0 Ft.; THENCE SOUTH 9°-10'E, 1215.50 Ft.; THENCE EAST 416.4 Ft.; THENCE N 0°28'1/2" W. 1200.0 Ft. TO THE POINT OF BEGINNING. CONTAINING 14.0 ACRES APPROX. ALL LYING IN SEC. 33, T. 10S., R. 4W., BENTON COUNTY, ORE.

*Harold W. Palmer*



N.E. CORNER ANTHONY ROBERTS D.L.C #55

FOUND 1 1/4" SHAFT P.P. 0.83' W of cor.