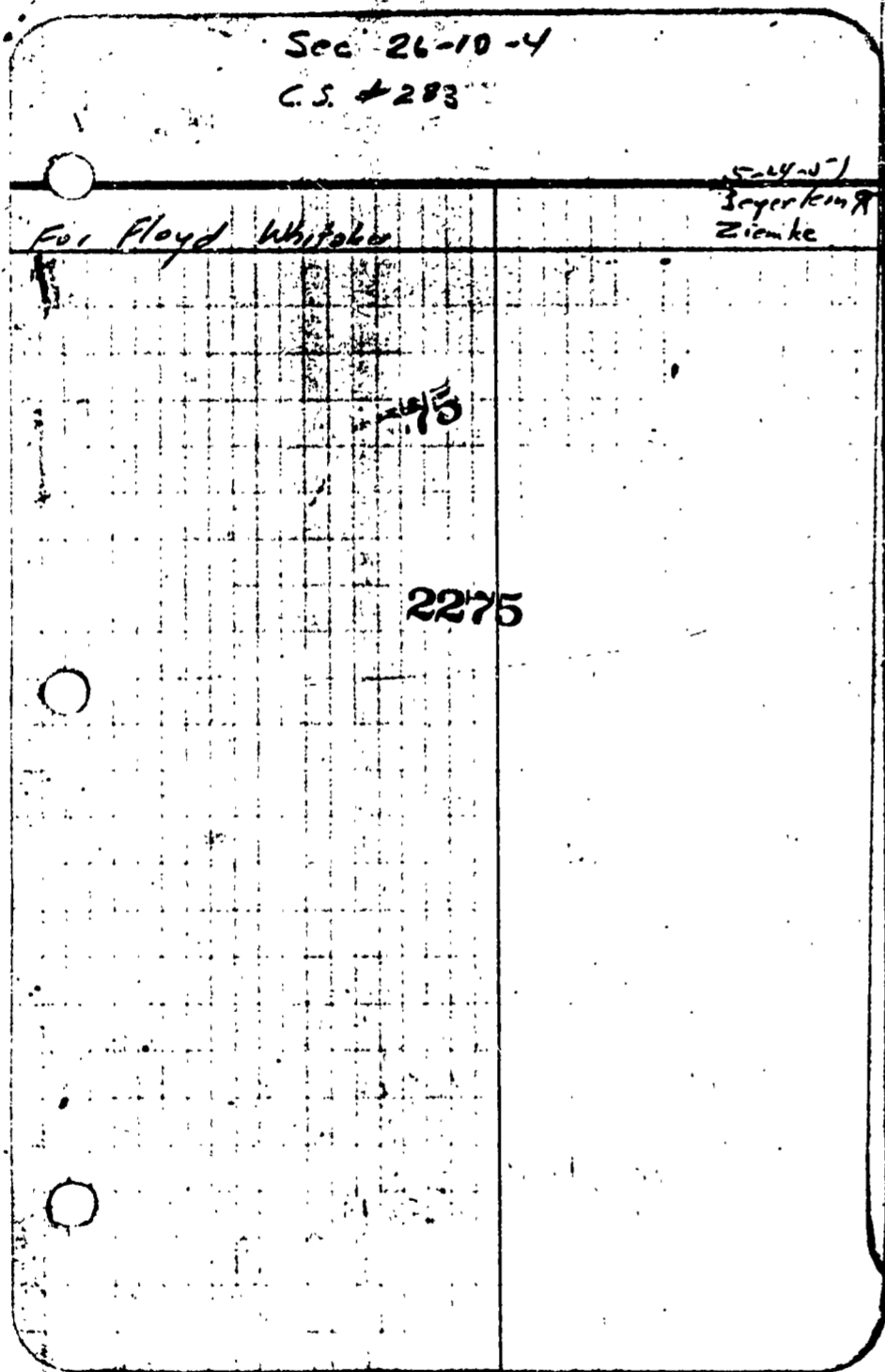


1" = 6 CHAINS



C.S. # 2275

LINE DATE \_\_\_\_\_ PARTY \_\_\_\_\_

PROJECT Whitaker, N. Alley

buggy 25 lip 45	tree gone		
0.037	-	0.037	
$\Delta_c$ Int LRT	92°23'	N 46E	
7.266'	-2°25'	479.13'	7.260'
$\Delta_5$ Int LRT	88°21 1/2'	from $\Delta_4$	
Turned 1/4" P Cor.			
22.32	-	22.32	
$\Delta_5$ 1/2 E to N	104°31'		
409.10	+4°22'	407.91	
$\Delta_4$ from SW	-4°33'	353.43	
354.55			
$\Delta_3$ LRT	4°31'		
465.75	-5°53'	463.20	
$\Delta_2$ Int N to SW of line 28' of N-W line.			
407.00	-3°50'	406.09	
$\Delta_1$ Top of ridge	15 1/2 S of E-W line		
351.48	+2°10'	351.20	
1/4" P S.W. Cor. Cl.	87°51'	from 1/4" P. E. Oak 50'	

LINE DATE \_\_\_\_\_ PARTY \_\_\_\_\_

PROJECT \_\_\_\_\_

7 10 ac			
Set 3/4" x 3/4" rod	3' N of line E		
37.29	-		
$\Delta_4$ Int LRT	99°00'	from $\Delta_3$	
Set 3/4" x 3/4" rod	3' N of line E		
143 SW of 32' loc Oak.			
394.00	-		
$\Delta_7$ Int LRT	98°10 1/2'	from $\Delta_6$ N to E	
1 1/2" P			
0.663	+1°36'	(+1.74)	
$\Delta_7$ LRT	29°42 1/2'	(+2.28)	
7.972	-3°18'	7.959	
$\Delta_6$ LRT	2°58 1/2'	from $\Delta_5$	

also see notes in file

Sec 26-10-4

C.S. #283

5-11-1  
Fryer King  
Zimke

Fo Floyd Whitaker

5/15

2275

LINE DATE ..... PARTY .....  
 PROJECT Whitaker N. Albany  
 KILHAM FORM F-172 - 107286

1222  
 1975 34  
 258  
 625  
 16/100  
 52  
 80  
 41250  
 3350  
 625  
 41255  
 384.55

buggy 1/5 hy6	0.037	Arce gone	0.037	
Δ <sub>6</sub>	Int LRT	92°23' N to E	479.13	
	7.266'	-2°25'	7.260	
Δ <sub>5</sub>	Int LRT	88°21 1/2'	from Δ <sub>4</sub>	
Tie rod				
Δ <sub>5</sub>	22.32	-	22.32	
	1° LRT	E to N	104°31'	
	409.10	+4°22'	4079	
Δ <sub>4</sub>	Δ <sub>4</sub> from SW	-4°33'	353.43	
	359.55	4°31'		
Δ <sub>3</sub>	LRT	2 1/2' of fnc	583.6W of E-W fnc.	
	fnc SW.	-5°53'	463.20	
Δ <sub>2</sub>	Δ <sub>2</sub> for Mrs 1' W of fnc	28 1/2' of E-W fnc.		
	407.00	-3°50'	406.09	
Δ <sub>1</sub>	Top of ridge	15 ± S. of E-W fnc.		
	351.78	+2°10'	351.23	
1/4" P-SK. Cor Cl.	Δ <sub>1</sub> LRT SW	87°51'	from 1/4" P ET.	
			Oak Sid.	

124  
 4/1800 97  
 40314  
 269  
 4/351 024  
 87087

LINE DATE

PARTY

PROJECT

KILHAM FORM F. 172 - 187286

7 10ac

Set  
3/4" x 34" rod

3 1/2 N of Sno-5

37.29

A4

1 1/2" Lt

99.00

From A3

Set

3/4" x 34" rod

3 1/2 N of fine C

A10a

14.9 SW of 32" loc. Oak.

394.00

A7

Int / RT

98.910 1/2

from A6 N to A5

1 1/2" p

0.663

+1.036'

(43.74)

A7

< RT

24.042 1/2

(525.29)

7.972

-3.918'

7.959

A6

< Lt

2.588 1/2

from A5