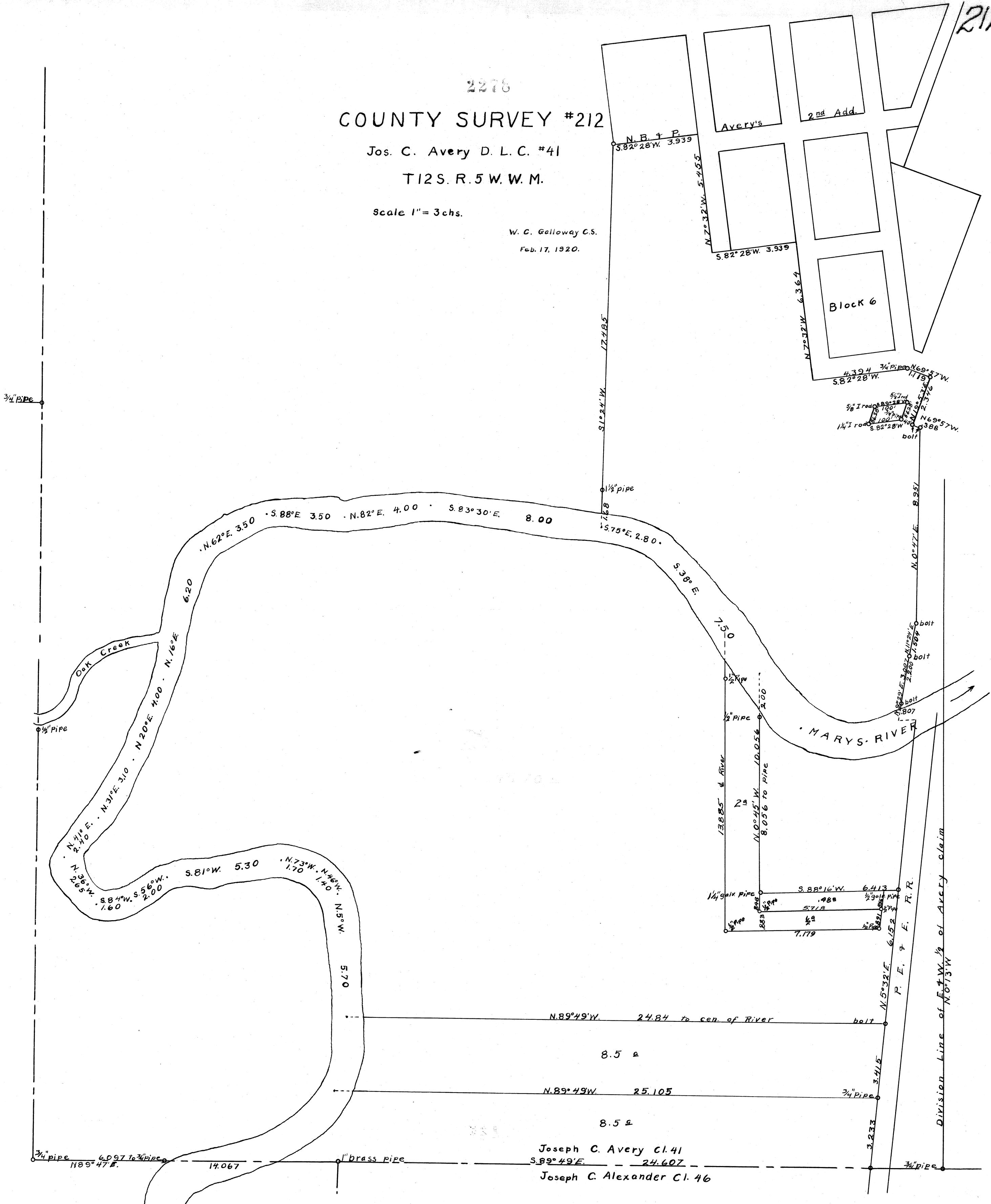


2278
 COUNTY SURVEY #212

Jos. C. Avery D. L. C. #41
 T12S. R. 5 W. W. M.

Scale 1" = 3 chs.

W. C. Galloway C.S.
 Feb. 17, 1920.



Joseph C. Avery Cl. 41
 S. 89° 49' E. 24.607
 Joseph C. Alexander Cl. 46

