

C.S. # 2284

Hardcopy 12-5 #19

also see notes in file

C1 43-12-5
Q S # 124

June 29
1951

2284

LINE DATE

PARTY

15 22
9090
2080
9999

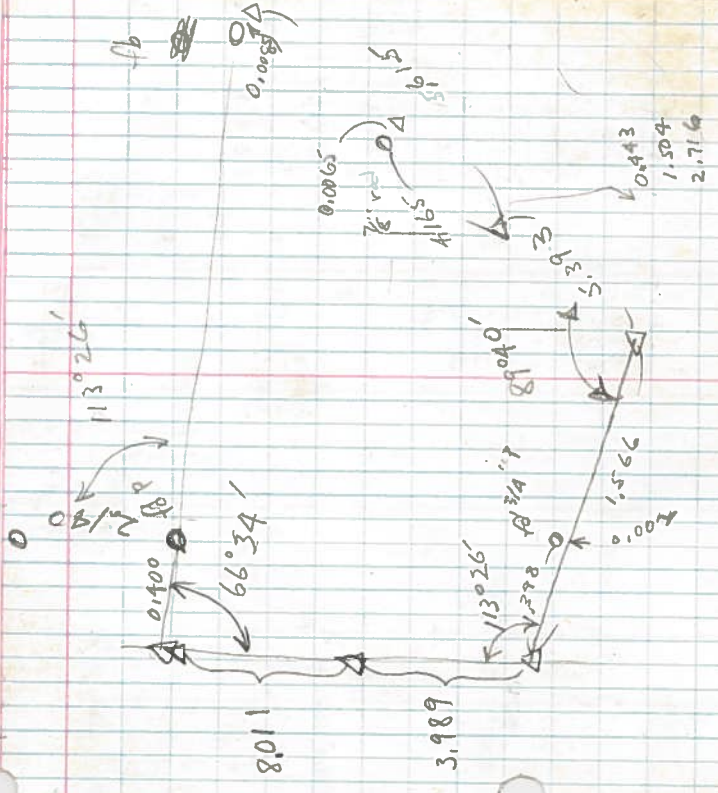
2284

PROJECT

KILHAM FORM P 172

180055

66	1606	1792	2424
40.0	3636	1284	66
396	39996	284	19541
40		2166	14549
66	909	1412	159989
60.0	17098		
599	21973		
60	14125		
	14140		
113°27'	1015		
0			
130°35	3424		
179°60	66		
66°25	160		
66°34	280		
170°60	160		
113°26	132		
	280		
	264		
2.727	5.616		
2.667	-0°51'		
5.394	2973		
2.424	21045		
7.818	5.019		
	7.098		
	2.080		
	2.140		
	9.940		
	4.608		
	4.165		
	443		
	1.061		
	1.504		
	1.212		
	2.716		
	1.580		
	5.330		
	6.919		
	8.011		
	1.101		
	1.515		
	9.414		
	1.575		
	1.929		
	60720		
	60		
	392		
	40		
	1106		
	9.1558		
	4.165		
	5.393		
	5.605		
	11450		
	4.155		
	3.413		
	7.568		
	5.393		
	2.961		
	2.127		
	1.5688		

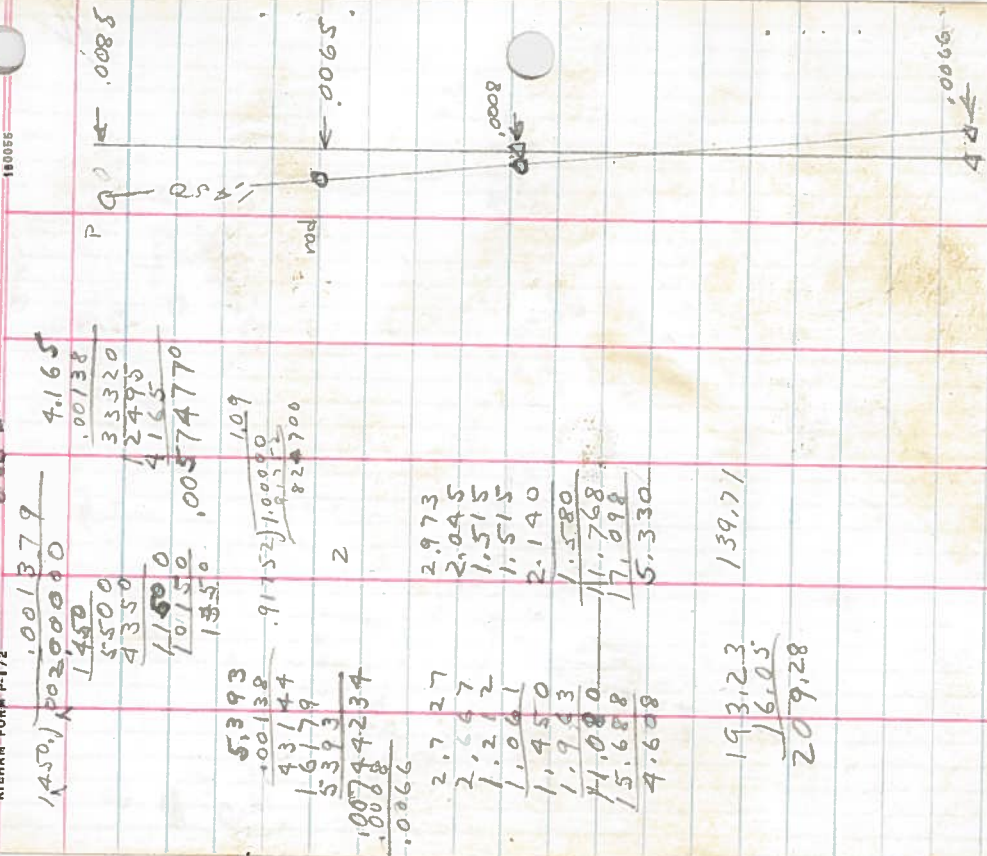


39234
112702
39234
005100+2

LINE DATE PARTY

PROJECT

MEHAM FORM P-172



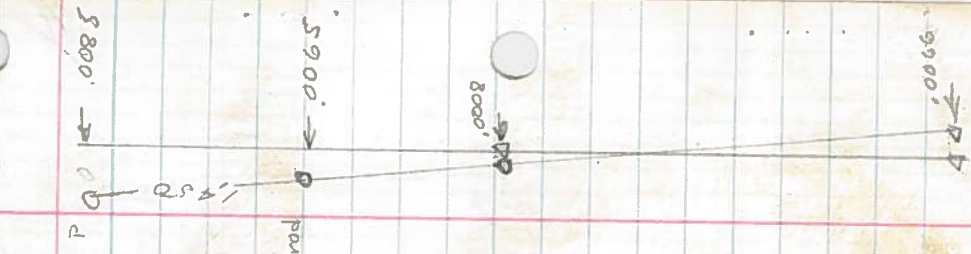
1450
1450
5500
4350
11500
10150
1350

5393
43144
16179
5393
10074234
10088
0.0066

2.727
2.697
1.212
1.061
1.450
1.943
41.080
15.688
4.608

193.23
16.05
209.28

139.71



1450
1450
5500
4350
11500
10150
1350

5393
43144
16179
5393
10074234
10088
0.0066

2.727
2.697
1.212
1.061
1.450
1.943
41.080
15.688
4.608

193.23
16.05
209.28

139.71

CS 124

LINE DATE June 29, 1951

PARTY Beyerlein

Ames

PROJECT Mrs Correll 2 pieces

JUNE 29

1951

Hovey D LC 43

T 22SR5W

Sec 4

;