

CS = 2518

- 000000 3-6 #

also see notes in file

Cl. 44-13-6

G-5 #294

9-20-51

~~Byrd in~~
Ames

Für W. Dark

2313

26,205

LINE DATE PARTY

PROJECT

KILHAM FORM P-172 197286

① NE of Doggett
1/2" P

② 1/4" shaft

2.403 +2°20' 2.401

48 1/4" RT 90°07 1/2' W to N to NE cor Doggett
2.885 - from 24

47 -

7.992 +0°11'

46 -

7.935 -0°30'

45 -

7.938 -1°051'

44 on fern ridge SL
6.480 +0°54'

43 8" E of 8" oak stump
3.852 -0°40'

42 5" L L 90°00' from Δ
0.720 S of S. edge bridge deck 1.64 W of 6" oak SE
7.691 -1°54'

41 Midway between two 1/2" pipes N-lim Rd W.

7,292
9,229
1,937

766
1,618
9,228

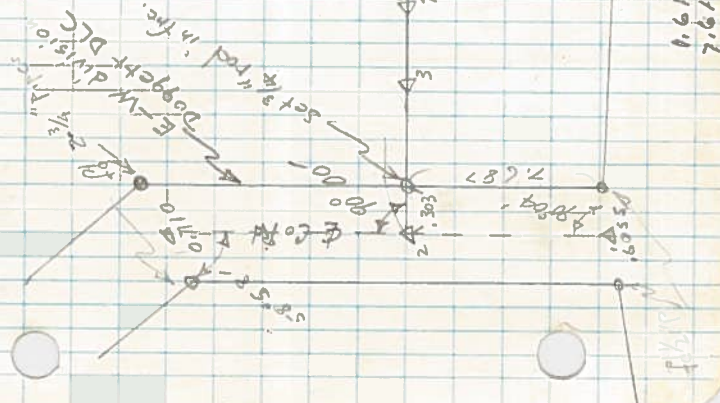
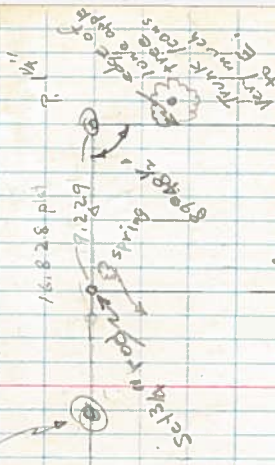
7,687

2,885
7,992
10,877
19,229
1,618

2313

Stone 5x7"x16"
Oak 13" N x 8" E 1.559
8" S x 9" W 2.548
Corner says this stone
may have been moved
when old fence was
put in

Set 3 N to rd and
16.828 pht
7.229



1.618
7.611

LINE DATE..... PARTY.....

PROJECT.....

KILHAM FORM P-172 - 187286

Set 74" rod 30' W & 15' N of running Spring (Sept '51)

check to cor. 0.013 4,140 -8°16' 0°11'

49 Lt

corner set by 90° offset S. is 0.013 N of cor 40 ac of E end Doggett Ch.

0.105 -

40 -

4,048 -8°20' 4,005

49 - from NE of Doggett Ch.

Stone at four cor

11,709 - (plat) not measured

49 Lt 0°07'

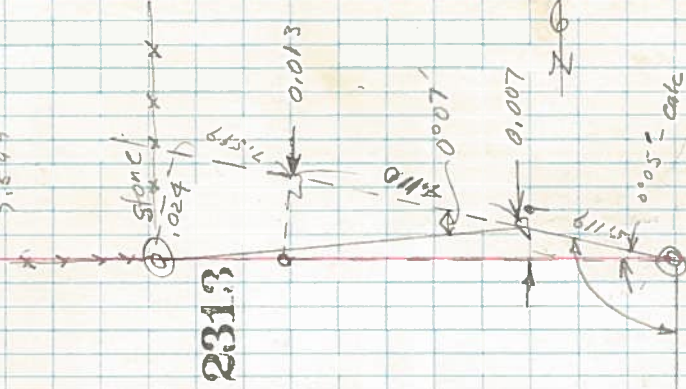
5,127 -3°08' 5,119

⊙ 1/2 RT 89°53k' from shaft S. to W
NE Doggett DLC

9,1229
5,119
4,110

99851
5,127
698957
199702
9985
499255

5,119 36077
16,828
11,709
4,110
5,119



LINE DATE PARTY

PROJECT

KILHAM FORM R-172 187286

7.599	16828	001426	7.292
4.110	102400090	18828	43752
11.709	71320	67312	43752
100204	44080	33656	481.272
46836	104240	1	502.1
234180			2113
02388636			
1001426	001426	411	
5119	1426	1426	
12834	5704	5704	
1426	00586086	001426	
7130	7599	12834	
007299694	12834	12834	
00586	7130	9982	
01316	9982	010836174	
01083	010836174	98966	
102399	9.229	419	
98944	7.611	395844	
4.048	1.618	98961	
791552	8.000	395844	
3957760	8.382	40969854	
4.00525312	99879	4110	
66502.4	1.62	13	
452	999758		
404	599274		
396	99879		
0080	1680398		
56			
1.62			
+2049			