

2331

2331

14-5 No 27

C.S. # 2331

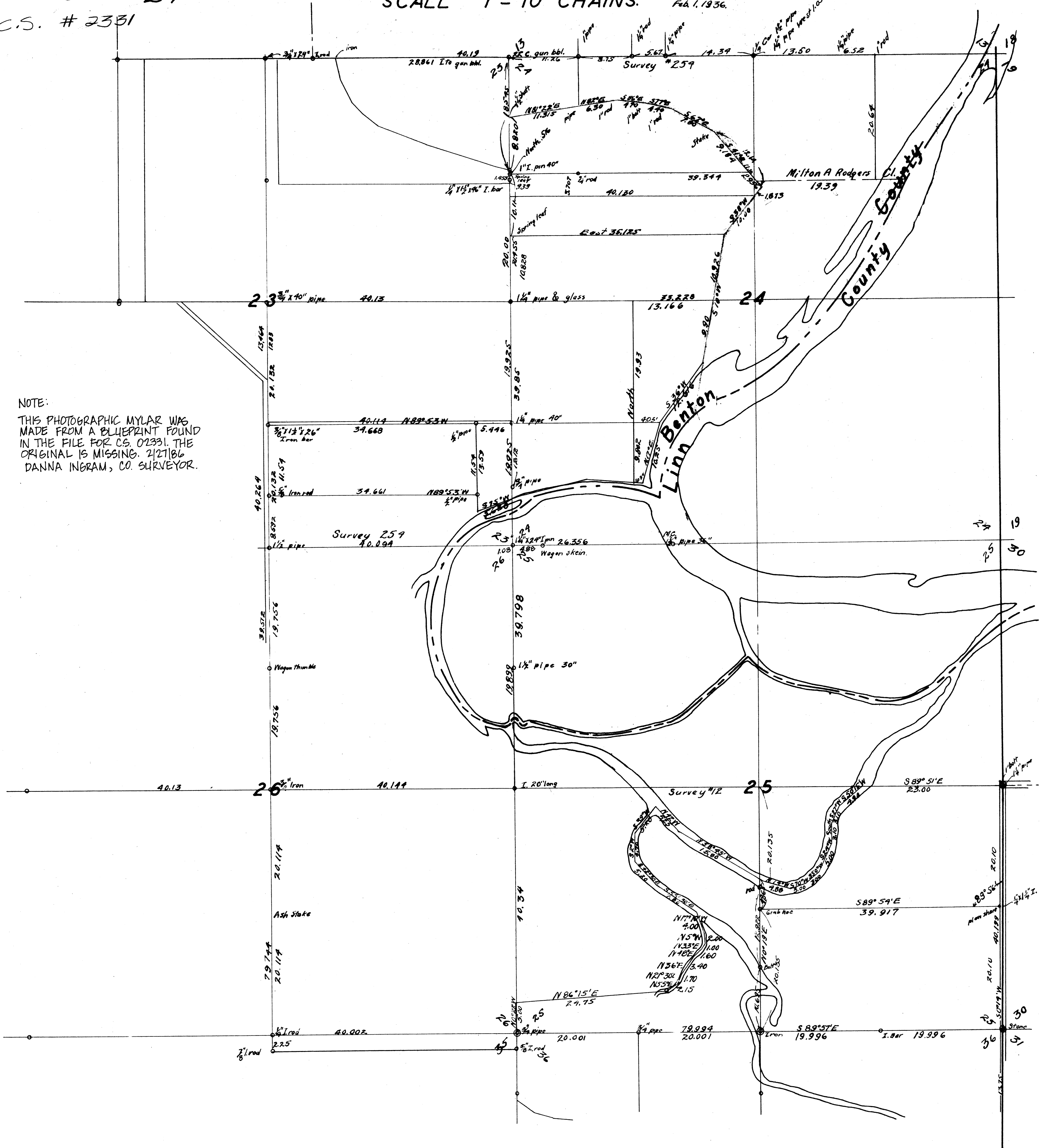
COUNTY SURVEY

#254 SEC. 23, 24 & 26. T. 14 S. R. 5 W. W.M.

#12 SEC. 25, 35 & 36, T. 14 S. R. 5 W. W.M.

SCALE 1" = 10 CHAINS.

Feb. 1, 1936.



NOTE:  
 THIS PHOTOGRAPHIC MYLAR WAS  
 MADE FROM A BLUEPRINT FOUND  
 IN THE FILE FOR C.S. 02331. THE  
 ORIGINAL IS MISSING. 2/27/86  
 DANNA INGRAM, CO. SURVEYOR.



13 Back to A 7  
 14 S. 41° E  
 Set 1 1/2" shaft  
 S. 38° W.  
 at 1873 set 3/4"  
 bolt  
 2956 ft  
 15 set a 7/8" iron rod  
 S. 10° W.  
 6.7065  
 16 7.178  
 17 set a 1" iron rod  
 3.748  
 18 3010  
 3564  
 19 set a car axle Sledge top of  
 -440' 2045  
 20 set a car axle

12.14  
 11.10  
 1.05

S. 38° W.	1873,	10,000 total	
S. 10° W.	10,926	8 sec. 24	
S. 10° W.	9.90		
S. 36° W.	12.616	to subd. cont.	
			10,926
			7.178
			3.748
			3010
			3564
			6,574
			4,038
			8,612

9.90  
 8.574  
 3.326

dyke