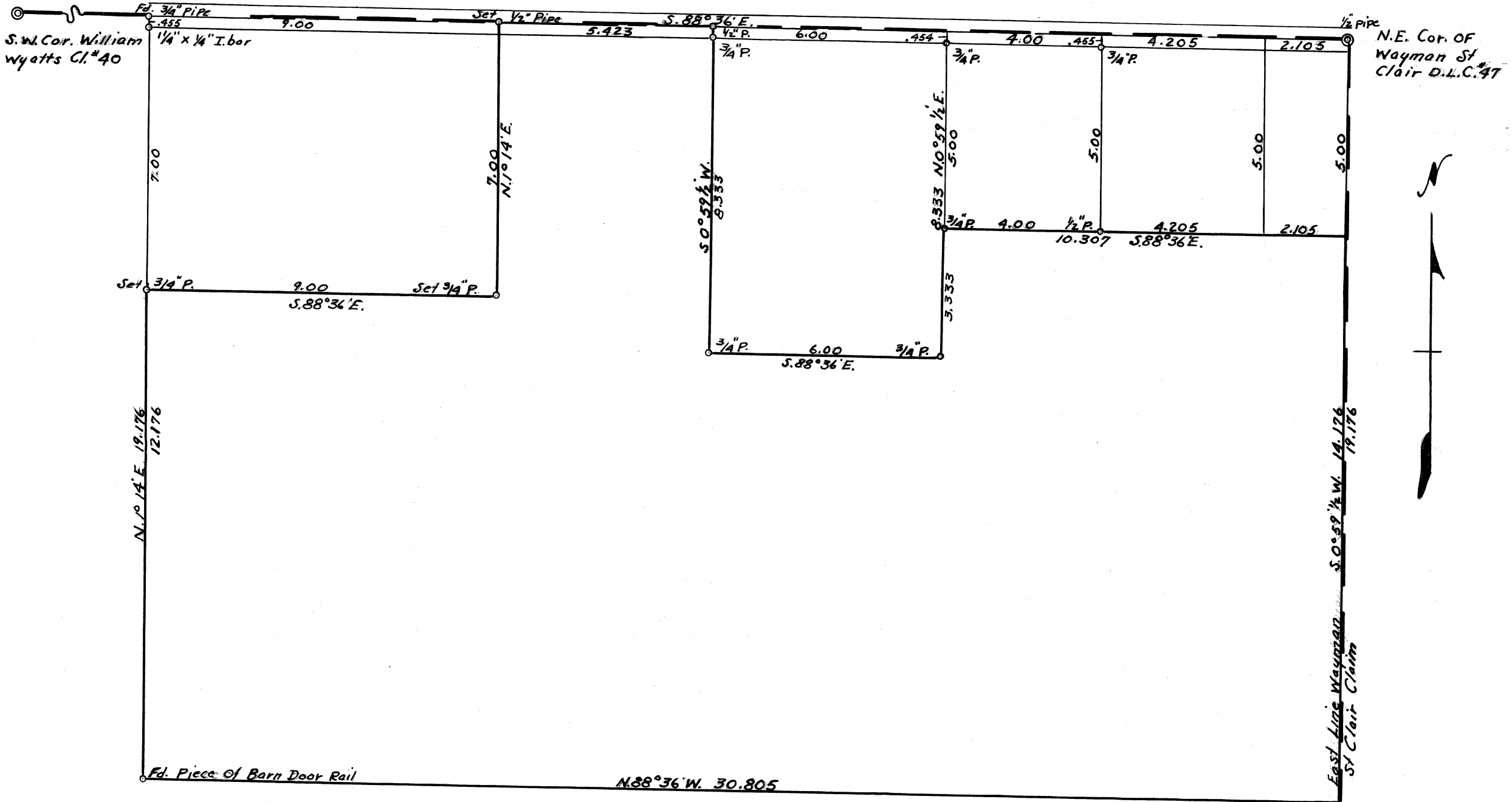


2348
JAMES SHAW
 WAYMAN ST CLAIR D.L.C. NO. 47 TWP.12 S.,
 R. 6 W., WILL. MER. SCALE: 1" = 3 CHAINS



C1 47-12-6

G.S. 52-0

2348

1-5-52

Beyerslein *

Ames

For James Shaw

LINE DATE _____ PARTY _____

PROJECT _____

KILHAM FORM P-172 167286

Set 3/4 x 35" pipe

0.886 - 0.886'
2.953 - 90° 7.952

Δ₃ 1st Lt RT

Set 3/4 x 42" pipe

0.162

Δ₃ 1st Lt 88°30'4" from 3/4" P. of road

Set Iron in E-W fnc. 0.50 W of N-S fnc. Part of barn door rail

4.234 - 4.234'
2.8 ft E of fnc. 12.156
7.952 - 101°2' 7.952

Δ₃ 2nd Lt 2°05' - 7.002

Set 3/4" P. 1st Lt RT 88°30'4" - 1.087

Δ₂ - 9.058
7.972 - 0°40' 7.971

Δ₁ -

2 P

177.55
355.050
2/4°10
2°05

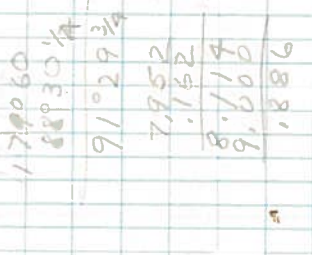
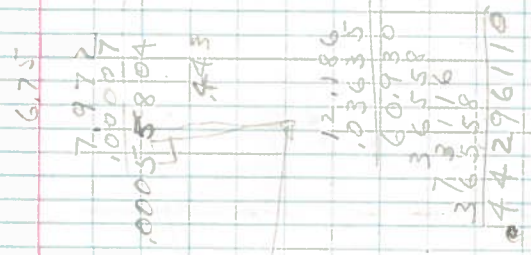
6.775
7.972
100.027
0.000558104
9.443

19.188, 44.3961
38376
59201
57564
163700
153504
191960

170060
88°30'4"
91°29'3"
7.952
1.152
8.114
9.600
1.886

99973675000
599838
751620
100189

101912', 102309
7.002
1618
161300
16167618



LINE DATE PARTY

PROJECT

KILHAM FORM P-172

180085

0 set 1/2" P of rd 9,000 from T. Slams

Δ

4,128 -0°35'

Δ

2,850 -+4°09'

3/4 x 35 1/2" P 1st R+ 89°50' from 3/4 x 40"