

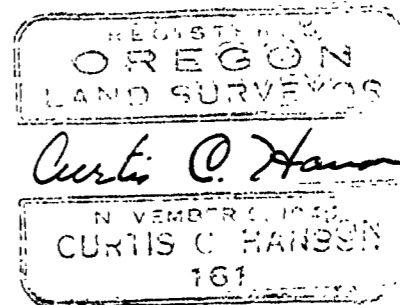
2378

GERALD HARRIS

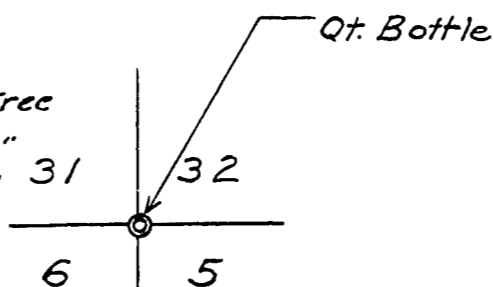
SECTION 6, TWP. 12 S., R. 6 W., WILL. MER.

Scale: 1 inch = 10 chains

JUNE 16, 1952



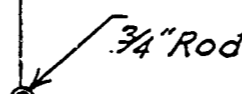
Mkd. W. Fir 4°N53'50"E 0.553
 Mkd. R. Fir 21°S64½"E 0.198
 Fir 26°N24"W 0.861 Orig. Tree
 Oak 14°S68"E 0.330 " " 31
 Oak 12°S62"W 1.070 " " 31



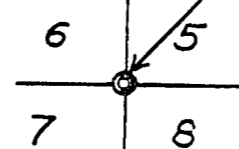
N 0° 22 1/2' W 39.355

Fir 21°N77°36'W 0.348
 Fir 21°N47°45'E 0.452
 W. Oak 12°N56°E (N46°E) 0.375td.

S 0° 15 1/2' W 39.873



Cedar 30°N53½'E 0.840
 Maple 30°N18°W 0.140
 Alder 10°S32°E 0.350



6-12-6

C.S. # 52-28

C.S.
231

2373

For Gerald Harris

Bye for
Amie's

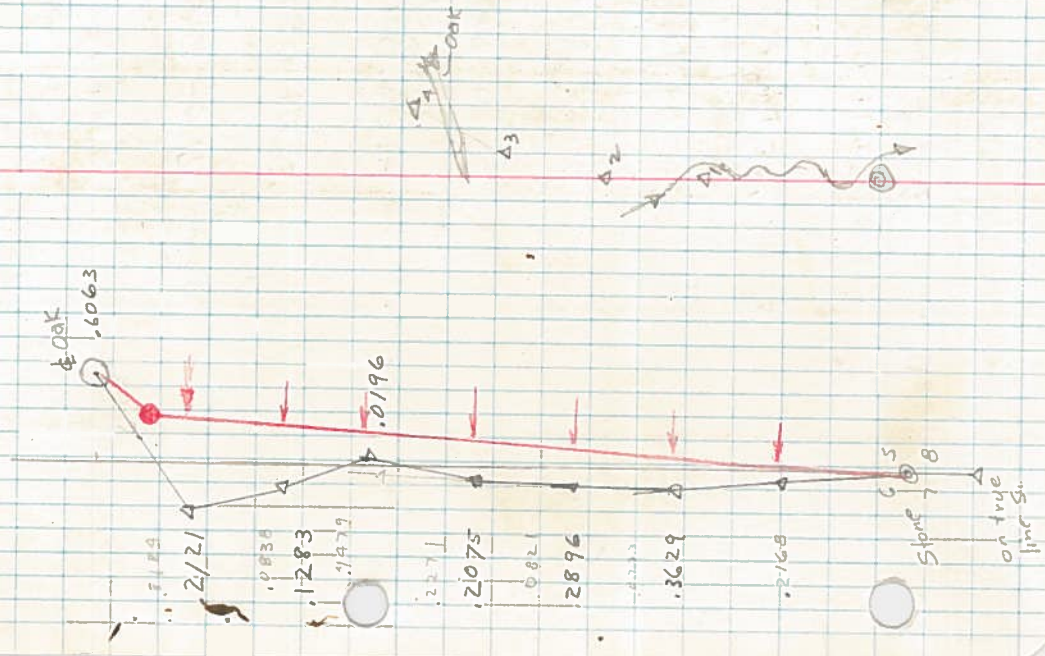
LINE DATE _____ PARTY _____
 PROJECT Gerald Harris E line S

KILHAM FORM P-172 187286

OAK 15" has been dead many years 2 rotted
 blazed holes point S. I.W. 16 ft to rotted line
 2,717 + 2037' 2,714
 Δ7 LRT + 18°38' 4,429
 Δ6 LRT 0°09½' 6,824
 Δ5 LRT + 6°29' 2,486
 25 ft W of old wall fir.
 2,524 + 10°00'
 Δ4 LRT 4°19½' 5,133
 in shale
 5,498 + 21°00'
 Δ3 LRT 0°14½' 6,217
 85 ft W of but of 2½ ft down oak
 6,519 + 17°31'
 Δ2 LRT 2°21' 4,996
 on small bench
 5,172 + 15°00'
 Δ1 105 ft E of 56 nail in root W side 66 ft leaning E
 7,436 + 4°00' 7,418
 Δ16 LRT 1°40½' from true Sec line S.

4°19½' 2/0°29' 2/4°42' 2/3°21' 2/10°21'
 2/18°39' 2/0°14½' 2/221' 1/040½'
 2/37°16' 18°38' 2/0°19' 2/2°58'
 0°09½' 0°29'

4000 186
 00215



LINE DATE _____ PARTY _____

PROJECT Gerald Harris E line 6

KILHAM FORM P-172 - 1978B6

on previous survey

bottle	LT	11°35'	
Δ ₁₇	3.232	+8°10'	3.199
Δ ₁₆	5.647	+3°00'	5.639
Δ ₁₅	0.791	+14°30'	0.766
Δ ₁₄	5.521	-0°17'	5.521
Δ ₁₃	1.660	+13°03'	1.616
Δ ₁₂	2.120	+20°46'	1.982
Δ ₁₁	2.984	+0°52'	2.983
Δ ₁₀	3.905	+8°46'	3.859
Δ ₉	5.342	+6°53'	5.303 5.298
Δ ₈	4.978	+4°35'	4.962
Δ ₇	6.000	+1°45'	5.997
	Δ ₇	4°22½'	from Δ ₆

23007 2/12/36
10334 6°18'

81 28 03
14 33
223°10' 0.00
11°35' 0.00

60.65
54.14
45.11
15.79

723040
1130

