

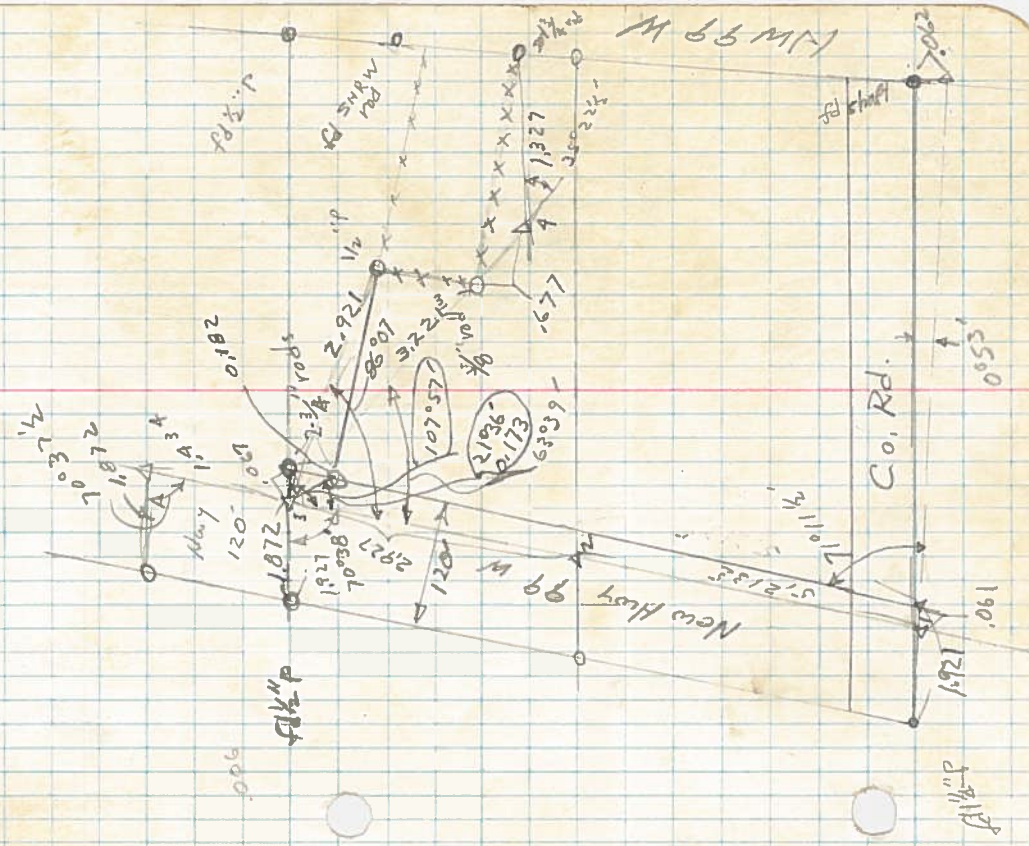
22 | 138
 150
 154
 60

 2998 | 173000
 216
 13958
 50420

 378648
 1125
 27045

1.25
 4668
 322
 4998
 3000
 2998

2/12 10.18
 62°33'



2418

LINE DATE

Aug 25 1952

PARTY

Beyerlein

(Sec 26-11-5 Ames
Stewart D.C. No 49)

KILHAM FORM P-172 - 107206

12) 49375
48
12
12

3276
6552
6552
2072

4545
61

2) 28946
14405

155

12

12

12

1009534

6616 1030000
33560
33080
29848
29520

15515

751575
51515
151515

606060
623484225

6616 62348
59544
28040
26464
15760

1921
61
1880

1927
1061
1866

172872
108857
101752
5196
52135

192085655
100942
30416
72832
172872

19435
874670
874759
255110
188702
664080
362350

88035

17056
70039
322

Int Lt 7101 1/2

94660
2000000
253400
189320
640800
567960
729400
662620
657800
12671
12671

12677
151515
63385

12677
63385
12677
63385
12677

192085655
100942
30416
72832
172872

19435
874670
874759
255110
188702
664080
362350

3/4" rod

Δ 3

Int Lt 85°40'

from Δ 1

Δ 4

Int Lt 144°53'

from Δ 1

Δ 5

Int Lt 77°35'

Shed

5.036
Int Lt 94°14'

0.045

2418

DATE Aug 25, 1952

PARTY

Beyerleint

Ames

PROJECT C. L. Cunningham (Sec 26-11-5) J. Stewart. DKC 49

KILHAM FORM P-172 197286