

DRAWING NUMBER
2472

PLAN HOLD CORPORATION • IRVINE, CALIFORNIA
REORDER BY NUMBER 0754R
POSITION EDGE OF PRINT ON THIS LINE

DRAWING NUMBER

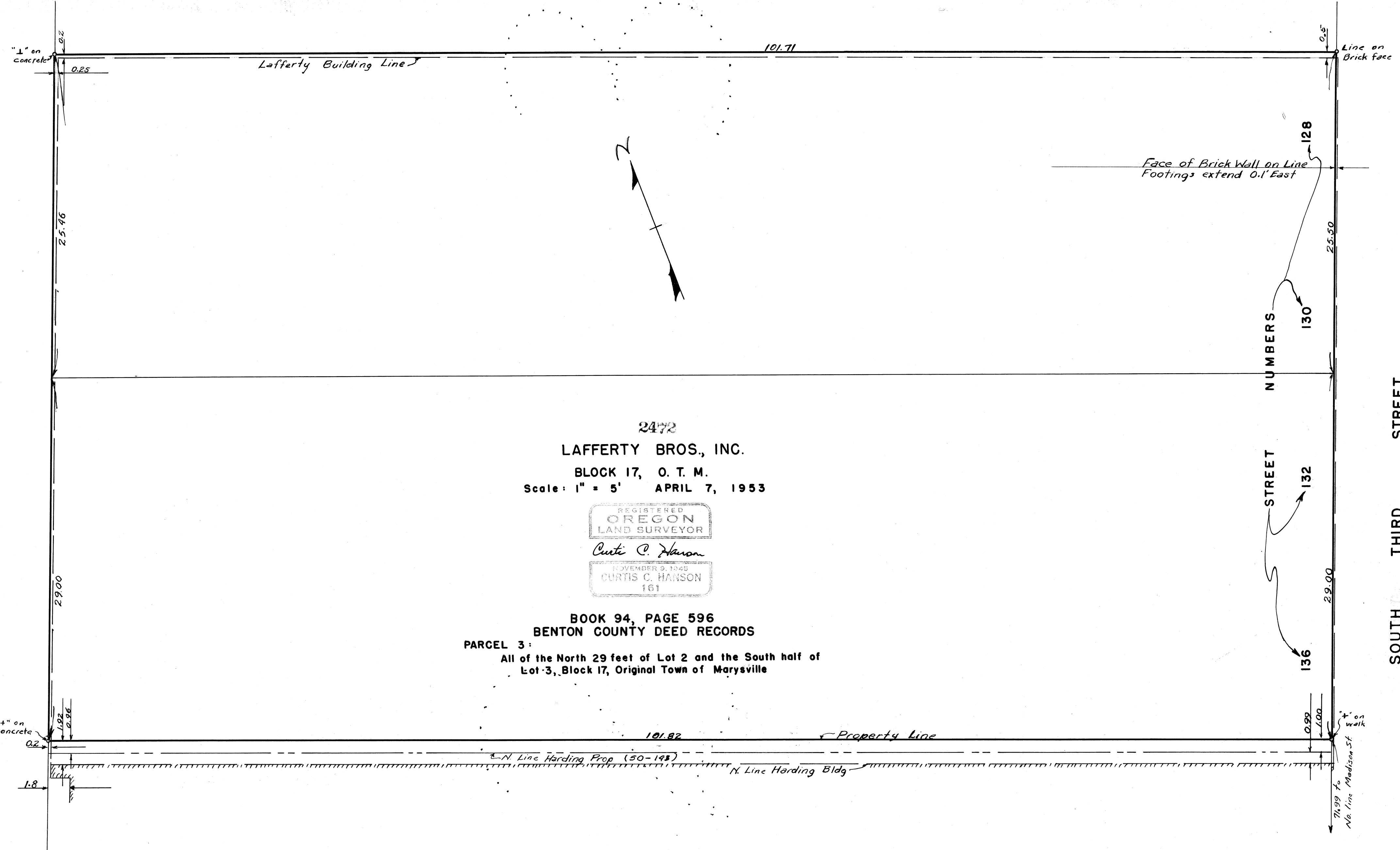
PLAN HOLD CORPORATION • IRVINE, CALIFORNIA
REORDER BY NUMBER 0754R
POSITION EDGE OF PRINT ON THIS LINE

DRAWING NUMBER

PLAN HOLD CORPORATION • IRVINE, CALIFORNIA
REORDER BY NUMBER 0754R
POSITION EDGE OF PRINT ON THIS LINE

DRAWING NUMBER
2472

PLAN HOLD CORPORATION • IRVINE, CALIFORNIA
REORDER BY NUMBER 0754R
POSITION EDGE OF PRINT ON THIS LINE



2472
LAFFERTY BROS., INC.
 BLOCK 17, O. T. M.
 Scale: 1" = 5' APRIL 7, 1953

REGISTERED
OREGON
 LAND SURVEYOR

Curtis C. Hanson

NOVEMBER 9, 1948
CURTIS C. HANSON
 161

BOOK 94, PAGE 596
 BENTON COUNTY DEED RECORDS

PARCEL 3:
 All of the North 29 feet of Lot 2 and the South half of
 Lot-3, Block 17, Original Town of Marysville

ALLEY

SOUTH THIRD STREET