

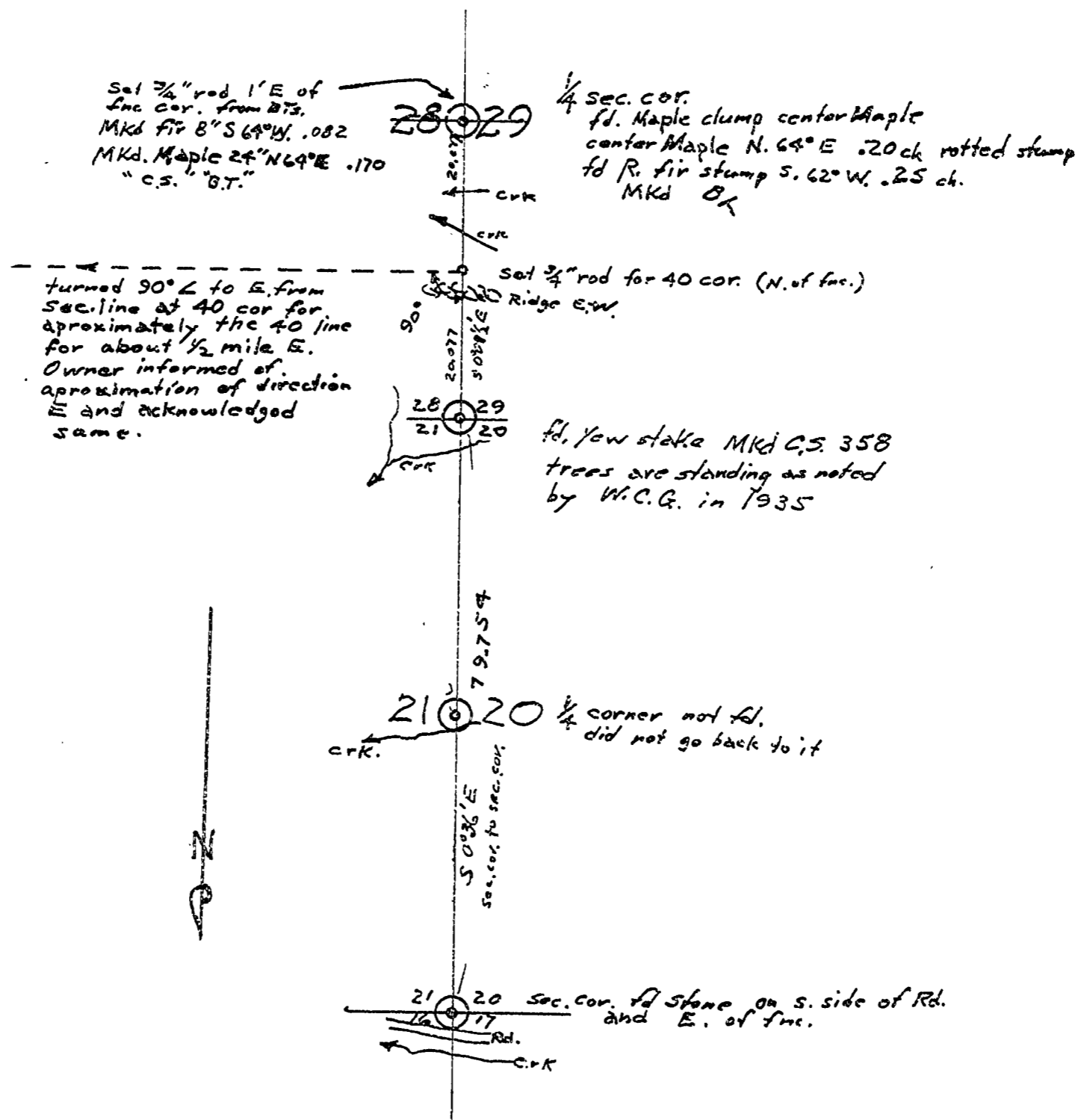
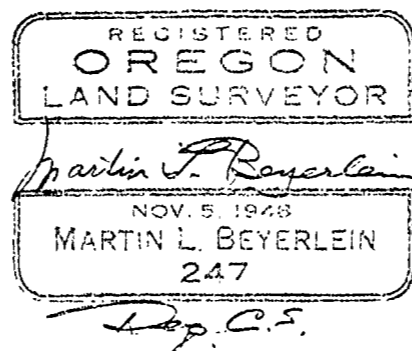
F. H. DORNBUSH

Sec. 20, 21, 28, & 29 T. 13 S., R. 6 W., WILL. MER.

SCALE: 1 in. = 20 ch.

2500

JULY 27, 1953.



LINE DATE

M. Beyerlein
PARTY
R. Beyerlein
C. Ames

PROJECT F.H. Dornbush

KILHAM FORM P. 172 187286

500 21 20 \$ 28 + 29

T 13 S, R, 6 W, W.M.

2500

2/53 14.3 2/1077 235

2500

LINE DATE _____ PARTY _____

PROJECT _____

KILHAM FORM P. 172 197286

Δ9	access drive	8°55'	-849'	3,272'
Δ8	∠ RT	2°48.5'	+4035'	on spur E 5,853'
Δ17	∠ Lt	1°26'	1026'	
	di. small spur	25.50	3 ct. N of c/k NE	
			7,176'	7,167'
Δ16	∠ RT	0°29.5'	0°29.5'	
		10°27'	+1033'	1,947'
Δ15	∠ Lt	1°03.5'	1003.5'	
	access cut	5.45		
		2.18	6,925'	2,012'
	∠ Lt	1°10'	1010'	6,919'
Δ14	E edge form	opposite slope	SE 4 1/2	NE of right
√19			445'	7,610'
Δ13	-			
		7°34'	1,986'	+9°40'
Δ12	-			
		18°37'	3,949'	+10°43'
Δ11	∠ RT	0°47'	0°47'	3,742'
		11°52'	3,862'	+11°58'
Δ10	∠ RT	0°28'	0°28'	3,779'
	2.77 to 5	5.25	3,930'	-2°28'
Δ9	side	large fir	-	3,926'
			0,210'	0,210'
Δ8	-			from Δ7

LINE DATE

PARTY

PROJECT

KILHAM FORM P-172 187286

Δ₂₆ 37' to root of stump of 18" dia. 3 1/2 NW of dbl 24" maple
3,480 - 2,580' 3,154

Δ₂₅ -
2,330 - 21°12' 2,172

Δ₂₄ LRT 0°40'
over riding 8005' 2,627 - 1°59' 2,625

Δ₂₃ LRT 0°40'
2 1/2 N of notch of maple 2 1/2 S of 24" maple
2,940 + 1°20' 2,939

Δ₂₂ -
4,841 + 15°44' 4,662

Δ₂₁ -
2,595 + 23°08' 2,386

Δ₂₀ 40' of limb in 20037 5' + W of 6 1/2" fir
6,394 + 4°43' 6,373

Δ₁₉ 101°34 1/2 W to S Δ₁₉ to Δ₂₀

fd. Yew stk. track in top
Yew stk. showing
3 firs old stump std. Per 1935 HCG.

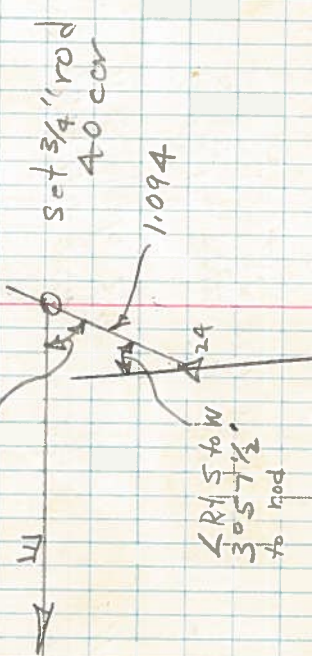
0,914 - 3°49' 0,912

Δ₁₈ 100°26' N to E

(200 + 7) (200 - 7)

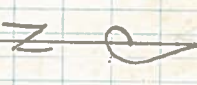
2/2000 2 2/2003 07
1000 10 1034 1/2
532 10134 1/2
1032
2009

LRT N to E
86048' from Δ₂₄
for approx 40 line



86048
122 96
163 36

Yew stk. rd.
20.077



LINE DATE PARTY

PROJECT

KILHAM FORM P. 172 187288

2500

Mkd fir 8" fir CB BT S 64° W 0.082
Mkd Maple 24" CS BT N 64° E 0.170

8" fir 12 Scribble a rotten stump
S 62° W 25' BT is fitted stump shows
N 64° E 20'

Set 3/4" rod 15' E of the car post
0.095 — 0.095

Δ₃₁ 1/4 Lt 99'05"
3,243 - 2,038 3,240

Δ₃₀ —
2,567 + 2,010 2,565

Δ₂₉ —
2,004 + 898 1,984

Δ₂₈ —
3,666 - 544 3,167

Δ₂₇ 1.60' from first 1/4 E
4,438 - 876 4,391

Δ₂₆ 1.30' from first 1/4 E
5,350 E

98836
7438

791488
296808
3915744
393744

439077968
130
3.091

14.50
11.41
3.68
7.76
1.98

5.78
2.56
3.22
14.50
1.30
3114
2.17

1.0

2.62
116

048
1572
282

262
0304968