

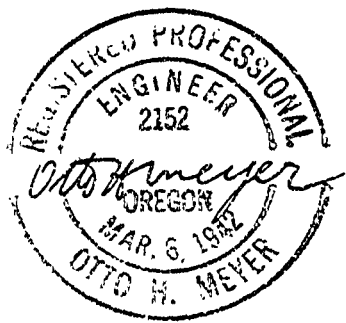
SURVEY ON HILLCREST DRIVE  
FOR

G.H. ANDERSON

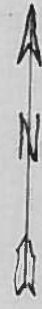
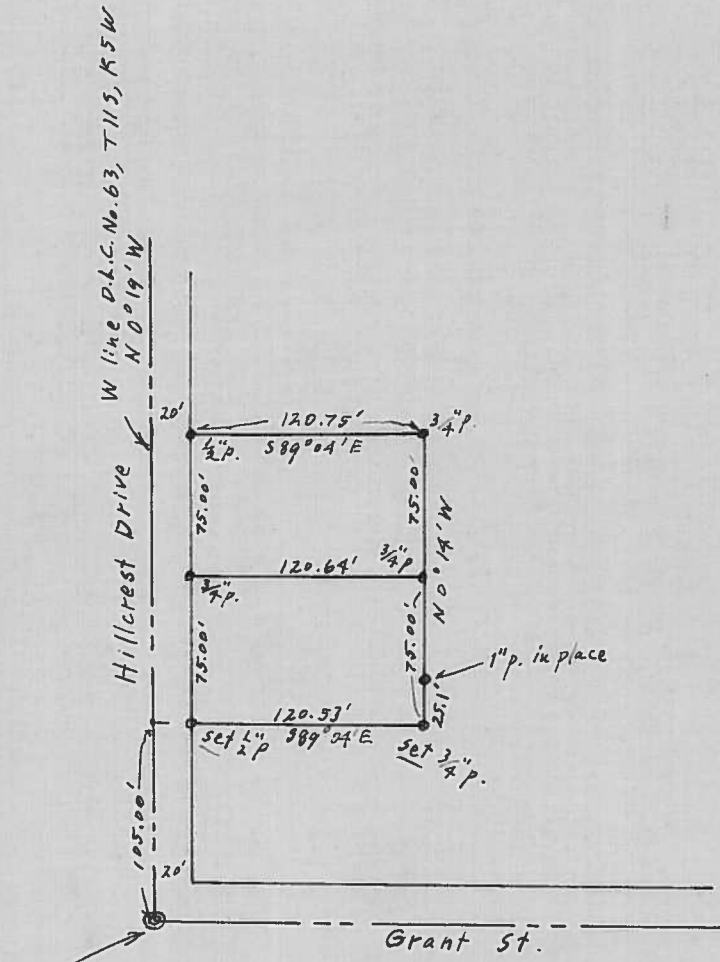
1" = 100'

O.H.M.

FEB 9, 1954



2542



set 60d spike  
for S.W. corner  
James L. Mulkey  
D.L.C. No. 63, T11S, R5W

SURVEY ON HILLCREST DRIVE  
FOR

G.H. ANDERSON

1" = 100'

O.H.M.

FEB 9, 1954



2542