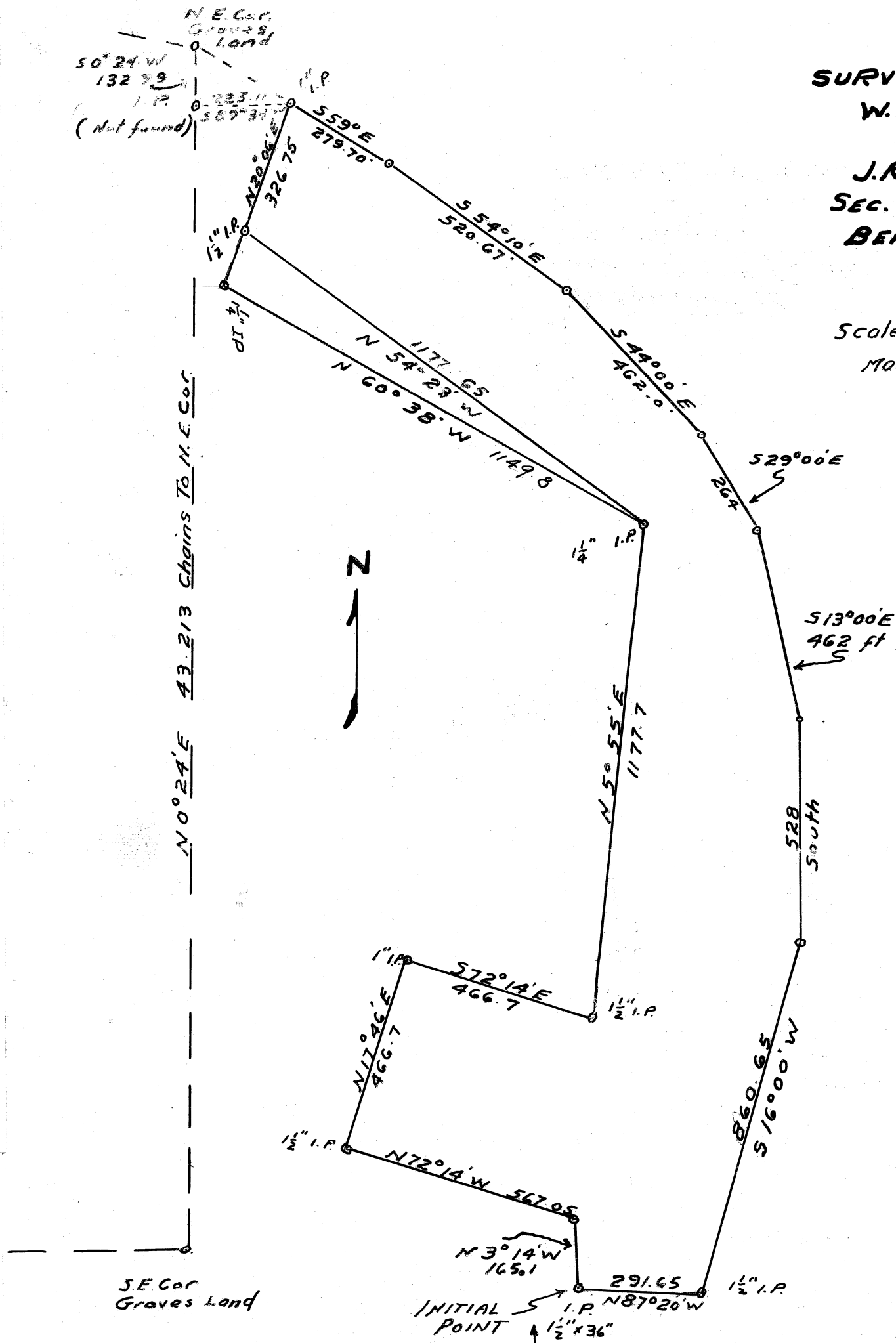


**SURVEY OF TRACT
W.K. BLACKER
To
J.R. TAGGART
Sec. 1 T. 12 S. R. 5 W.
BENTON COUNTY
OREGON**

Scale 1" = 300'
March 1954
Harold W. Pating
Registered Engr.



Initial Point is
North 2127.95 ft. and
East 1066.28 ft.
from the S.W. cor. sec. 1
T 12 S. R. 5 W. W.M.