

# MRS. ALFRED REIMANN

Sec. 18, T14S, R8W, W.M.

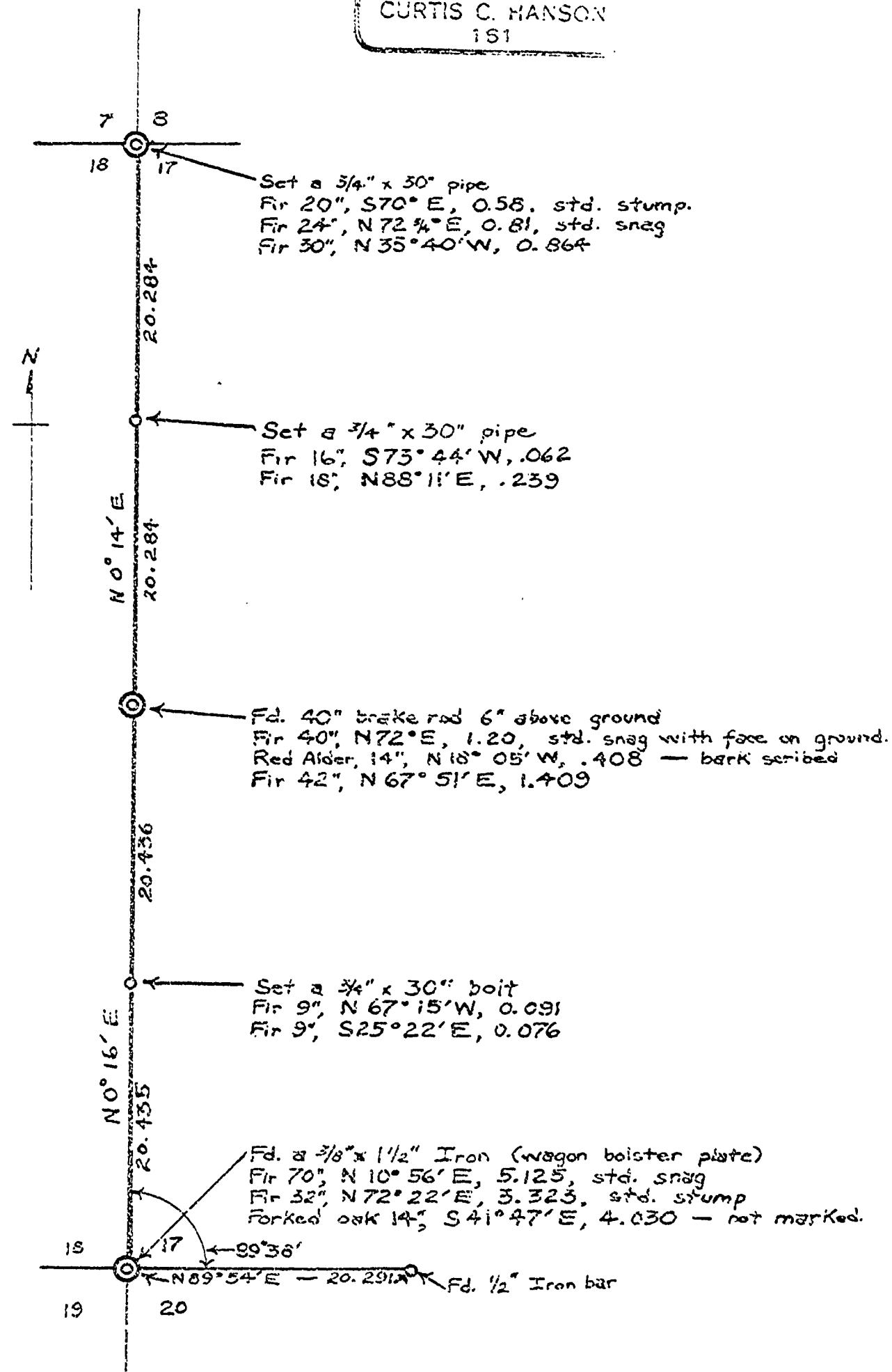
SCALE: 1" = 10 CHAINS

2621

NOV. 4, 1954

REGISTERED  
OREGON  
LAND SURVEYOR

*Curtis C. Hanson*  
NOVEMBER 9, 1945  
CURTIS C. HANSON  
151



18-14-8  
2624

Nov. 4, 54

Mrs ALFRED REIMANN

T-G. Cook

G.-V. Wallace

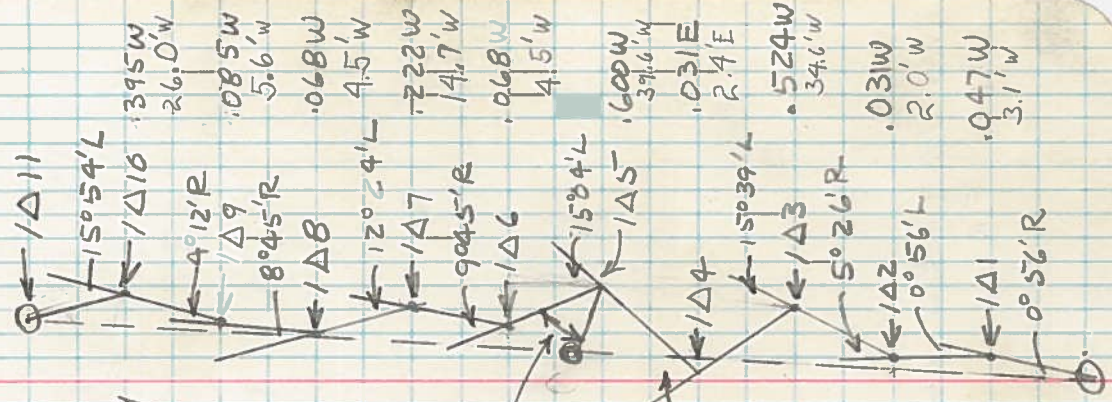
LINE DATE Oct 16, 54 PARTY

PROJECT

KILHAM FORM #172-196281

Hub	SD	H DIST	offset from R/L	Limit DIST.	Station
1 Δ 11	1978 +4°34'	1.972	.229E	1.934	40.871
1 Δ 10	4.168 +10°45'	4.095	.613E	4.081	38.437
1 Δ 9	6.795 +4°34'	6.773	.280E	6.793	34.856
1 Δ 8	1.039 -5°09'	1.035	.225E	1.024	28.063
1 Δ 7	2.339 +3°01'	2.336	.374E	2.330	27.039
1 Δ 6	3.735 -1°51'	5.133	.206E	5.108	24.709
1 Δ 5	3.990 +2°48'	3.985	.710E	3.931	19.601
1 Δ 4	3.033 ± 0	3.033	.057E	2.985	15.670
1 Δ 3	5.636 +10°45'	5.537	.595E	5.512	12.685
1 Δ 2	2.876 +8°32'	2.844	.071E	2.844	7.183
1 Δ 1	4.330 ± 0	4.330	.071E	4.329	4.339
		1817			
		19120			

1 Δ 11 W 1/4 Cor Sec 17  
 1/2" Brake Rod 29" above  
 Ground. Maple is gone.  
 Fir snag face lying  
 on ground. Old stake  
 nearly rotted out.



Oil Road  
 7.393



LINE DATE

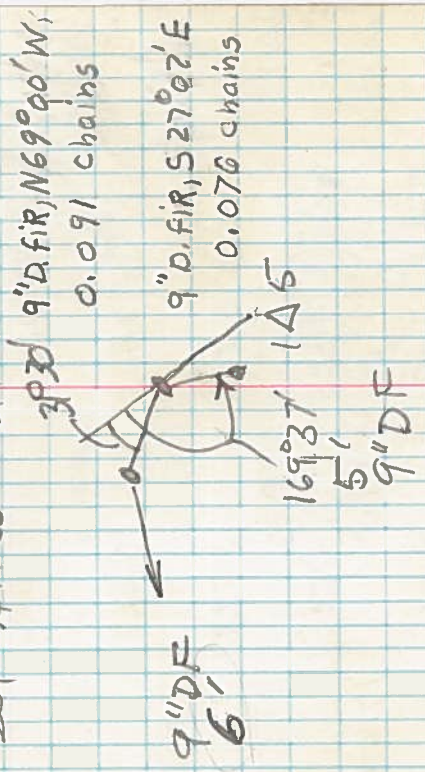
PARTY

PROJECT

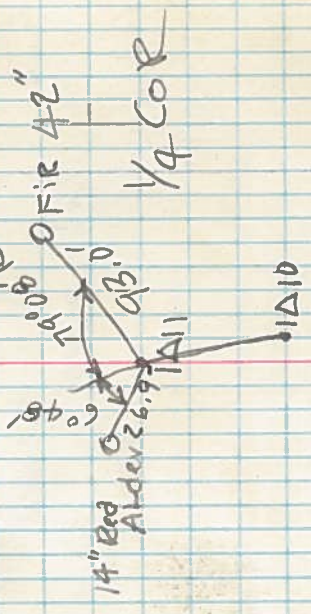
KICHAM FORM P-172-196281

TRAT 1/Δ 11 BS 1/Δ 10  
BT FIR

Cor BS 1/Δ 5  
Set 3/4" x 30" Bolt



1/Δ 11 1/2" brake rod 29" above ground  
 42' D. FIR, N 67° 49' E, 1.409 chains  
 14' Red Alder, N 18° 07' W 0.408 chains



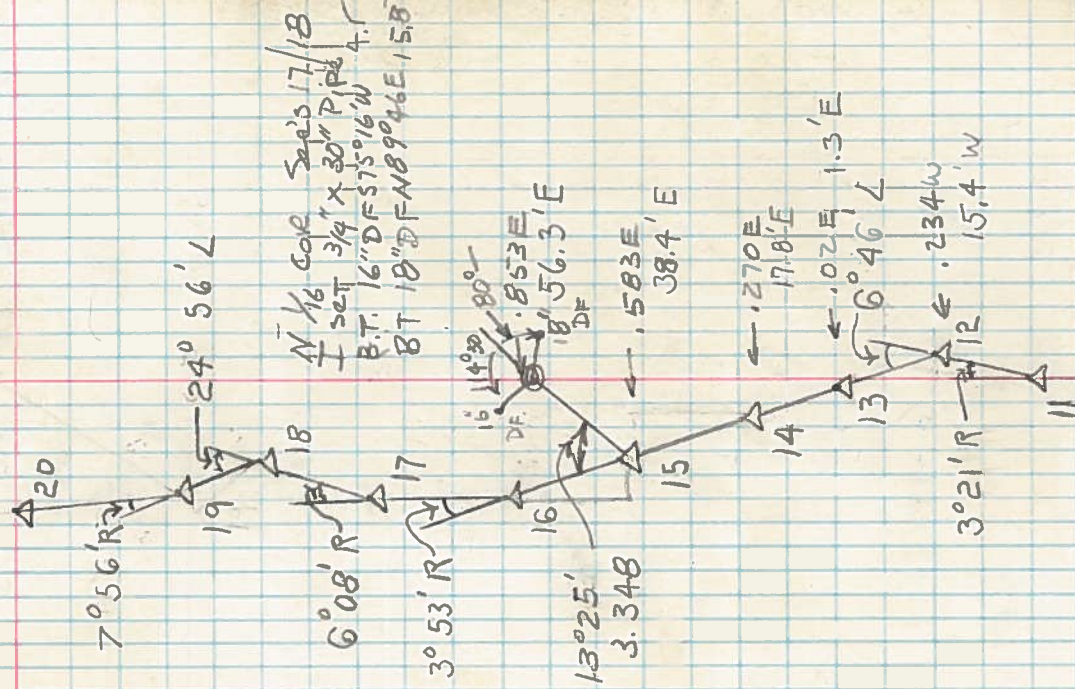


LINE DATE \_\_\_\_\_ PARTY \_\_\_\_\_

PROJECT Traverse N from W 1/4 Cor.

17-19-8

Hub	SD	VERT	H DIST	offset from R/L	Line DIST.	
Δ 20	6.590 -27°15'	1.897W	5.895	5.798	37.704	
Δ 19	1.219 -6°36'	0.817W	1.218	1.158	31.906	
Δ 18	3.668 +20°58'	0.440W	3.425	3.402	30.784	
Δ 17	6.162 +19°55'	0.834W	5.793	5.793	27.346	
Δ 16	4.761 +18°0'	0.881W	4.528	4.520	21.553	
Δ 15	5.707 +20°0'	0.611W	5.081	5.072	17.033	
Δ 14	5.107 +17°40'	0.298W	4.866	4.857	11.961	
Δ 13	3.782 +18°0'	0.008W	3.597	3.590	7.104	
Δ 12	3.646 +14°45'	0.206E	3.520	3.514	3.514	
Δ 11		0.000				



LINE DATE \_\_\_\_\_ PARTY \_\_\_\_\_

PROJECT \_\_\_\_\_

KILHAM FORM P. 172 - 1962

Hub	SD Vert	H Dist	Offset from R/L	Line Dist	Station
1A22	2.712 -2.1'	2.532	0.028W	0.499	40.568
1A21	2.733 -2.603	2.446	2.510W	2.365	40.069
1A20					

Set a 3/4" x 30" pipe for the corner

BTS 70°E - set up

I Chopped out

BT N72°3/4°E Snag

I Scribed 30"

DF N35°40'W, 57'

CS S 8 TMS, ROW

BT



LINE DATE

PARTY

PROJECT

KILHAM FORM P-1172 196235

Hub	SP Vert. Δ	H. DIST	off set from RL	Line DIST	Station
2A4	12.405 ± 0	12.405	.348N	12.403	20.299
2A3	193.37 ± 2.15'	2.928 193.22	.565N	2.904	7.896
2A2	147.36 + 06.30'	2.218 146.41'	.191N + 191N	2.217	4992
2A1	184.08 ± 0.15'	2.789 184.08	.272N	2.775	2.775
18	17				
19	20				

