

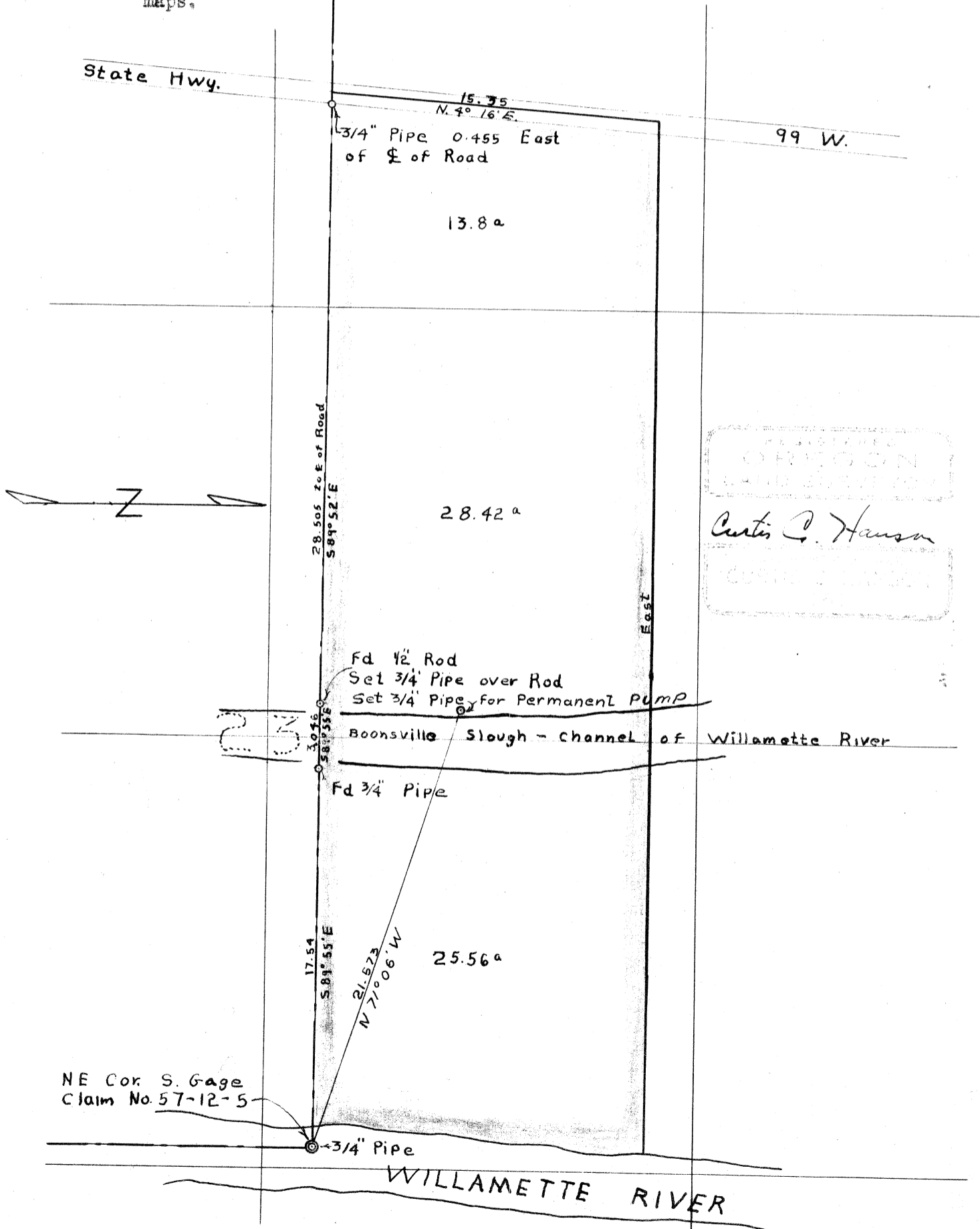
2668

C. E. Jones property in

Sec. 23, Twp. 12 S., R. 5 W., W.M.

Scale: 1 inch = 6 chains March 29, 1955

I, Curtis C. Hanson, County Surveyor of Benton County, Oregon, hereby certify that this plat was made on March 29, 1955 from maps on file in my office and from County Assessor's aerial photographs, and that the monuments marked "found" were uncovered on that date and those marked "set" were set on that date, and are as indicated on said maps.



REGISTERED
 CURTIS C. HANSON
 COUNTY SURVEYOR

LINE DATE 3/29/55

PARTY C. Cook

PROJECT Water R.I.G.H.T. For C.F. Jones
Burnt Woods

KILHAM FORM P. 172 - 196281

C.S. No 2668

Points A & B are on N. line of
Claim No 57-12-5

E	50.10	-36°45'	49.25
D	408.30	408.30 ± 0	408.5
A			
C	50.35	+4°25'	50.2
B			50.2

