

L. KOLA

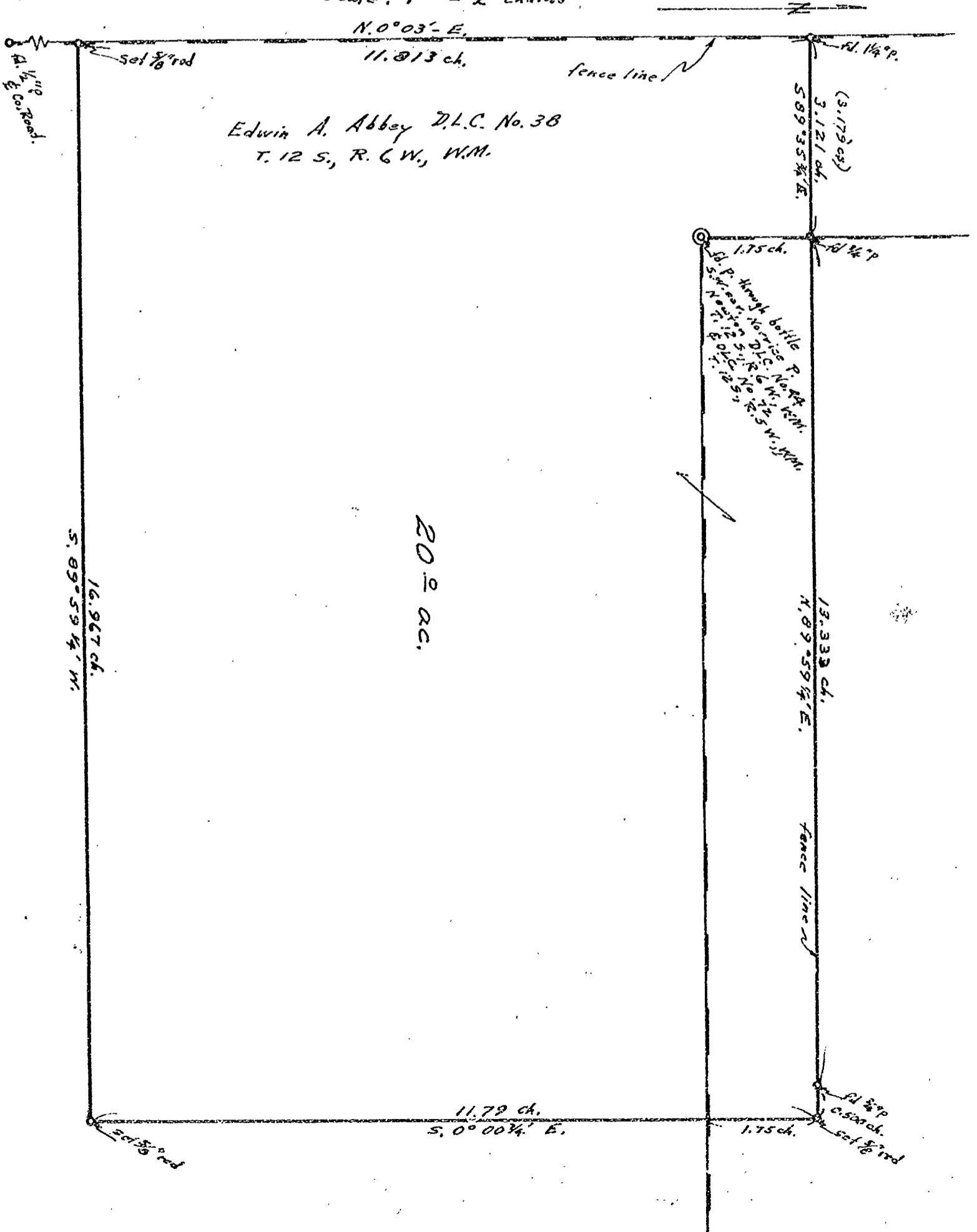
NORRICE P. NEWTON D.L.C. No. 44 T. 12 S., R. 6 W. Will. Mer. and  
EDWIN A. ARBEY D.L.C. No. 38 T. 12 S., R. 6 W. Will. Mer.

A SURVEY AS ORDERED BY THE OWNER

REGISTERED  
OREGON  
LAND SURVEYOR

*Martin L. Beyerlein*  
NOV. 5, 1948  
MARTIN L. BEYERLEIN  
247

July 20, 1955  
Scale: 1" = 2 chains



2690

L. MOLA

NORRICE P. NEWTON D.L.C. No. 44 T. 12 S., R. 6 W. Will. Mer. and  
EDWIN A. ABBEY D.L.C. No. 38 T. 12 S., R. 6 W. Will. Mer.

A SURVEY AS ORDERED BY THE OWNER

REGISTERED  
OREGON  
LAND SURVEYOR

*Martin L. Beyerlein*

NOV. 5, 1948  
MARTIN L. BEYERLEIN  
247

July 20, 1955  
Scale: 1" = 2 chains

N. 0° 03' E.

11.813 ch.

fence line

Set 3/8" rod  
Ed. A. Abbey D.L.C. No. 38

Edwin A. Abbey D.L.C. No. 38  
T. 12 S., R. 6 W., W.M.

Ed. 1 1/4" P.  
(3.173 ch.)  
3.121 ch.  
S. 89° 35' 1/4" E.

1.75 ch.  
Ed. P. through bottle  
Norrice P. No. 44 W.M.  
S. 1/2" Norrice D.L.C. No. 44 W.M.  
S. 1/2" Norrice D.L.C. No. 44 W.M.  
S. 1/2" Norrice D.L.C. No. 44 W.M.

20.0 ac.

16.967 ch.  
S. 89° 59' 1/4" W.

13.333 ch.  
N. 89° 59' 1/4" E.

fence line

11.79 ch.  
S. 0° 00' 1/4" E.

Ed. 3/8" P.  
0.500 ch.  
set 3/8" rod  
1.75 ch.

set 3/8" rod